

Society of Watercolor Artists

January Notes 2016

Message From Our President:

The adage, "If IT ain't broke, don't fix IT" can apply to farm equipment, machines, organizations, personal health, marriage, and many other situations. However, this adage totally misses the point that for anything not to break, the item needs continuing maintenance, perhaps new parts, updates and upgrades, and periodic assessment that the item is actually doing what we want it to do.

My personal goal for the year is that the every member of SWA understands what we are about and how we plan to achieve our goals. Anonymous is not a member of SWA.

Please come to the monthly meetings.

More importantly, please communicate with the steering committee. If you have an idea, a suggestion, a complaint, or a need not being met by the demos, or anything else you think would improve SWA, please email me at jcnickell@sbcglobal.net. I promise I will not steal your ideas! Remember that I am an older, retired physician who was trained at a time that confidentiality was sacrosanct. If you send me a message and put "personal" in the header, I will treat it the same as if it were a communication in my office.

Have a great 2016!!

John Nickell, President SWA

**IMPORTANT NOTICE: JANUARY MEETING MOVED BACK ONE WEEK
TO MONDAY, 25 JANUARY [call your friends to be sure they know!]**

If your last name begins with A-C please bring refreshments

Due to the Martin Luther King Day holiday our January meeting is one week later than normal.

ASEL ART AWARDS Artist of the Month Competition Resumes in January



SWA members are invited to bring a completed piece to our monthly meeting. The artwork is shown anonymously with each member in attendance voting once for their favorite. After winning 1st place, that artist retires from the competition for the remainder of the calendar year. Those who win 2nd place may continue to compete with other pieces of work. Art work previously shown in a SWA juried exhibit is not allowed. The first place winner goes home with a \$25 Asel gift certificate and 2nd place earns one

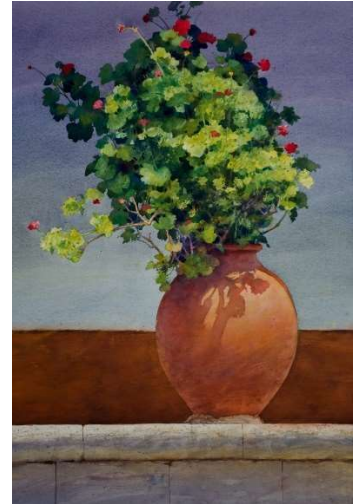
for \$15. In November all first place pieces during 2016 will return for selection of "Artist of the Year." Many thanks to Mary T House who chairs this fun event for us each month! Thank Asel Art Supply when you shop at 825 Foch Street.



Treasury Report

December bank balances: Checking: \$15,375.40 Building Fund: \$15,363.54

January Demo Artist... James Tennison



James Tennison graduated from the Art Center College of Design in Pasadena, California in 1982. He cites his time at Art Center, where he studied under such artists as Dan McCaw and John Asaro, as his most formative educational experience. After graduating he spent several years as a freelance illustrator, eventually making the transition from illustration to portraiture and fine art. Inspired by local geography, neighborhoods and landmarks in his hometown of Fort Worth as well as subjects he finds on his travels, James seeks to paint the beauty he sees all around. His primary interest is the effect of light - sunlight and shadow - and the colors that can be seen in shadows and reflected light if one looks closely. Tennison's paintings have been exhibited in galleries throughout the United States, including the Salmagundi Art Club in New York City, the Legacy Gallery in Scottsdale, Arizona and Howard/Mandville Gallery in Kirkland, Washington. His work has been awarded medals, Best of Show, People's Choice, Purchase Prizes and more. James has participated in many group shows and competitions and had a one man show titled "A Year in Fort Worth" at Galerie Kornye West in Fort Worth. His portrait commissions have taken him across the United States and to England. His commissions include the official portraits of former Texas Governors Rick Perry and Ann Richards, which hang in the State Capitol in Austin. James has painted portraits for Harvard University, Southern Methodist University, Texas Christian University, The National Cancer Institute, the New York County Lawyer's Association as well as many other public and private collections. He is a Signature Member of the Oil Painters of America as well as the Portrait Society of America. Join us as James takes us through a slide show of his work with a few time-lapse videos of works in progress.



Have You Renewed Your Membership?

Your 2016 Dues is Due Now!

We are considering an electronic membership directory for 2016 rather than printing on paper. Not only is it more ecofriendly, it will be easier to manage and maintain updates for our Membership Chairperson. If approved at the January Board meeting, each member will receive a pdf file that may be printed or tucked into a folder on your computer or ipad. Our membership for SWA runs on a calendar year January-December. Your payment can be made online with pay pal through our website: [Http://www.SWAwatercolor.com](http://www.SWAwatercolor.com) Or you can mail your membership fee to Paula Johnson, Membership Chair. Her address is 256 Stone Mountain Road, Cresson, TX 76035.

Individual: \$40 Seniors 65+: \$30 Family: Add \$5 to above amounts Lifetime: \$400 one-time payment Honorary Memberships: Free and are granted by vote of the Board

Don't miss out on your membership discount to the upcoming SWA International Juried Exhibition and workshop in April with Frank Eber, our juror and workshop instructor!

Members in the News

Bob Cook will be featured in the February/March issue of PleinAir Magazine. Lynne Buchanan and Darla Bostick are 2 of 30 artists accepted to the Visual Arts Society of Texas in Denton for the 125-Mile Juried Exhibition. The show will be at the Gough Gallery in the Patterson Center of Visual Arts 15 Jan-25 February. Lynne is the Program Director for Trinity Arts Guild—watch for some good demos! She also has works in 2 galleries:

John James is off to a busy new year! He has been accepted to Arts in Harmony in MN, Valdosta State University National Exhibit in GA, Waterworks Art Museum Work on Paper Exhibit in Montana, Eastern Kentucky University Chautaugua National What If Exhibition and the Punta Gorda, 10th Annual Biennial in FL. Below are images of John James' paintings with the state they where they will be shown in ().



Works by John James: "Men Are From Mars" (GA) "Wrecking Ball" (MT) "Letters to Remember Orange" (FL)



"Cliff Memories" by Lynne Buchanan and "The Message" by Darla Bostick

Dates Announced for SWA 2016 International Juried Exhibition

Plans are well underway for the 2016 International Show at the Central Library in Fort Worth juried by Frank Eber. Please note the entry dates are earlier than first posted.

Saturday, 20 February: Midnight deadline online through CaFE

1 March: Notifications sent to entrants

Sunday, 10 April: Shipped paintings due

Saturday, April 16, Noon-2pm: Installation

Saturday, April 30, 2-4pm: Reception/Awards

Saturday, May 28, Noon-2pm: Removal of Show

Instructions for Entry: Here is the link to the SWA International Exhibition 2016

https://www.callforentry.org/festivals_unique_info.php?ID=3040 Go to Cafe at: <https://www.callforentry.org/> Log into your account (creating one is free and simple) at Café. Click on the link below once logged in or copy and paste the following: https://www.callforentry.org/festivals_unique_info.php?ID=3040

To accommodate the demo and workshop provided by Frank Eber please notice the April SWA meeting will be Monday, 25 April (one week later than usual). The Frank Eber Workshop is scheduled for 26-29 April.

Make Your Reservation for the 4-Day Frank Eber Workshop 26-29 April!



It isn't too early to make your plans for the Frank Eber 4-day workshop.

Where: St John's Anglican Church, 2401 College Ave, Fort Worth, Texas

When: 26-29 April

Cost: Your SWA membership earns a workshop discount! Costs are still being tabulated and will be posted in January.

Rhonda Barefield, Workshop Chair, can be contacted at: rhondabarefieldart@gmail.com

A Tip for Resizing Your Work for Entries

For some of us entering art shows is made more difficult by the digital requirements. After you photograph your art, download your image to the computer, name it according to the prospectus. You can use the free service by picaresize.com. Follow 3 or 4 easy steps, choose "Custom Size" and enter the pixels required on the longest side (depending upon horizontal or vertical format). Then be sure to select "Best" for the quality. Next choose "save to disc" so that the image goes to your computer. You will immediately get your image back, with the same title except "rsz" will be at the front of the name. Save to your computer and rename the image to fit your prospectus. Picaresize will eliminate your image from their website within minutes.

ASEL ART AWARDS Artist of the Month Competition Resumes in January



SWA members are invited to bring a completed piece to our monthly meeting. The artwork is shown anonymously with each member in attendance voting once for their favorite. After winning 1st place, that artist retires from the competition for the remainder of the calendar year. Those who win 2nd place may continue in the competition with other pieces of work. Art work previously shown in a SWA juried exhibit is not allowed. The first place winner goes home with a \$25 Asel gift certificate

and 2nd place earns one for \$15. In November all first place pieces during 2016 will return for selection of "Artist of the Year." Many thanks to Mary T House who chairs this fun event for us each month! Thank Asel Art Supply when you shop at 825 Foch Street.

SWA membership runs on a calendar year Jan-Dec

Our website address is: www.swawatercolor.com Welcome to new member and returning members:

Pam Bracado, Arlington pambrocato@gmail.com

Laurie Lindemeier, Fort Worth operalll@att.net

Perri Hamilton, Denton (no email provided)

Elizabeth Nelson, Ft Worth elizabethnelson@gmail.com

Harvey Youngblood, Fort Worth architexan@sbcglobal.net

Les McDonald, Jr, Houston les@lesmcdonald.com



www.shutterstock.com - 267226484

We like new members...invite your friends! The first visit is free.

Membership includes these benefits:

- Fellowship with like-minded creative folks
- Post your art work on our Facebook
- Free monthly SWA newsletter
[Http://www.facebook.com/SWAwatercolor](http://www.facebook.com/SWAwatercolor)
- Entry discount for any SWA show
- Free image on the SWA Members Gallery
- Annual Juried Membership Exhibition
- Buy space on the SWA Premium Gallery for \$20
- Annual Juried International Exhibition
- While maintaining SWA membership earn SWA Signature Membership after selection to 5 juried exhibitions our juried exhibitions (without disqualification)
- Jo William's free critique session
- Asel Art Supply 20% discount
- Fun competitions
- December Holiday Party and painting swap
- ASEL Art of the Month Contest



Monthly meetings are held at the UNTHSC, Everett Building. After you turn from Camp Bowie to Clinton St, turn left into a sloping parking lot beyond the vacant kiosk. We are on the bottom floor of the building to the right corner. Watch for a banner on the parking lot with directions to our room (or check the map on the website)

5:45— Board Meeting

6pm— Critique with Jo Williams (bring in 1 or 2 works for some friendly advice)

7pm— brief business notices followed by demo, snack and art of the month

25 Jan Meeting changed to accommodate Martin Luther King Day, demo James Tennison

15 February: Meeting with demo artist, Randy Meador

21 March: Meeting with demo artist, Soon Warren

25 April: Meeting with demo artist, Frank Eber

26-29 April: Frank Eber Workshop in Fort Worth

May: Meeting with demo artist, Laurin McCracken

June, July, August: no monthly meeting

19 September: Meeting with demo artist, Jo Moncrief

17 October: Meeting with demo artist, Jim Stewart

21 November: Meeting with demo artist, Sharon Serrago

December: Holiday party TBA

Ongoing SWA Fundraisers (They help you to help us!)



makes quarterly donations to SWA through your shopping. Go to www.krogercommunityrewards.com If you already have a Kroger's Plus card, create your account and input your card number. In 7 to 10 days after shopping you will notice at the bottom of your receipt a donation was recorded for SWA.



offers SWA members a 20% discount on their watercolors and customized brushes that are 100% vegan and cruelty-free. The savings given members are matched and donated back to SWA. The company will post member's art work created with their paints on their website, blog and direct people to a site of the artist's choice. SWA discount code: Members-20-SWA <http://shop.colorsofnature.com>



donates .05% of your online purchase back to SWA. Choose Society of Watercolor Artists as your nonprofit organization. It is listed as Denton, TX for its location...we are working to clear that up. Tell your friends!



2016 SWA Officers and Members Extraordinaire

2016 BOARD OF DIRECTORS

President: John Nickell
President-Elect: Darla Bostick
Secretary: Linda Akins pending vote
Treasurer: Hugh Heaton

Exhibit Chair: James Stewart
Education/Workshop Chairs:
Nancy Maas & Rhonda Barefield
Membership Chair: Paula Johnson

Communications Co-Chairs:
Darla Bostick & Mary Stitt
Past President (Emeritus):
Celeste McCall

STANDING COMMITTEES

EDUCATION COMMITTEE

Co-CHAIRS: Rhonda Barefield and Nancy Maas
Committee Members Are:
ASEL Painting of the Month/Year: Mary T House
House & Properties: **AVAILABLE**
Monthly Critique: Jo Williams
Programs: Nancy Maas
Social Chairman (Refreshments/Receptions):
AVAILABLE
Workshops: Rhonda Barefield

EXHIBITION COMMITTEE

CHAIR: Jim Stewart Committee
Members Are:
Hanging Volunteers: **AVAILABLE**
Membership for Exhibitions: Paula Johnson
Monetary Entries for Exhibitions: Hugh Heaton
SWA Signatures: Debbie Downing
Website Entries & Submissions: **AVAILABLE**

MEETING VOLUNTEERS (not a committee):

Greeters: Shirley Nichols **Open for more!**
House & Properties: **AVAILABLE**
Hospitality: **AVAILABLE**
Painting of the Month: Mary T House
Programs/Assistant to Demo Artist: Nancy Maas

PUBLICITY & COMMUNICATION COMMITTEE

Co-CHAIRS: Darla Bostick and Mary Stitt
Committee Members Are:
Newsletter: Valerie Cranston (beginning Feb)
Photography: Veronica Ritchey
Print Editor for Catalogs: **AVAILABLE**
Publicity: **AVAILABLE**
Website Manager: Chairs of Committee
Website Consultant: Sharon Giles

FINANCE AND MARKETING COMMITTEE

CHAIR: Hugh Heaton
Committee Members Are:
Director of Finance & Budget: Hugh Heaton
Fantastic Fans: Shirley Nichols
Grants: Watson Arnold
Japanese Gardens Festival: **AVAILABLE**
Professional Standards (yearly audit): Brenda Morgan

MEMBERSHIP COMMITTEE

CHAIR: Paula Johnson Committee
Members Are:
Director of Membership: Paula Johnson
Editor of the Annual Membership Directory:
AVAILABLE