

SWA

Society of Watercolor Artists

Fort Worth, Texas

Letter from the President – Darla Bostick

February 2020



The turn of a new year is the perfect time to reset goals and resolutions. Think of what you wish to achieve with your art this year! Maybe this is the year you try a new media or subject matter. I just returned from India with some wonderful photographs of the people and am thinking this is my year to work on portraits. Maybe this is the year you enter more shows or volunteer a bit of your talent to help run SWA (we are still looking for help). Because SWA runs on a calendar year, we have turned a new page for our organization. I was flipping

back through some of our past newsletters and made a few notes. In 2010, only ten years ago, we were debating on whether to accept a new material on the market, yupo. It was almost as heated a discussion as when we voted to go white...that is, white only mats with no colored liners (following NWS guidelines). In 2011 we began a new web presence by adding pay pal. Continuing our glance to the past, the 29th National Exhibition 2010 was our last national as we presented our 1st International Exhibition in 2011. We are fortunate to have a show of this caliber in our area, and even more exciting that we are the ones who present this opportunity for artists locally as well as internationally bringing together the magic of watercolor. We are one of the few art associations in Texas who present a show of this scope. Consider making this the year you enter your work. The entry deadline is only a month away, March 8.

Last year we enrolled our highest yet membership number of 170! Let's continue growing! Have you renewed your membership for 2020? Our membership year begins in January and Pay Pal makes it really easy to pay online.

February is Bring a Friend to SWA Month! See you at the meeting with Walt Davis as our demo artist!

Darla Bostick

It's time to renew SWA Memberships
for 2020 – Renew **here!**

Painting of the Month

SWA members are invited to bring a completed piece to our monthly meeting. The artwork is shown anonymously with each member in attendance voting for their favorite. After winning 1st place, an artist retires from the competition for the remainder of the calendar year. Those who win 2nd place may continue to compete with other pieces of work. Art work

previously shown in a SWA juried exhibit is not allowed. The first place wins a \$25 Asel gift certificate and 2nd place wins a \$15 gift card. Many thanks to Sondra Carr and Mary House, who co-chair this fun event for us each month! Be sure and thank Asel Art Supply when you shop at 825 Foch Street.



January Paintings of the Month



First Place:

Ann Patton,
"Cows in the
Huachucas"

Second Place:

Trish Poupon,
"Armadillo Sunset"



2020 Demo Artists

January 27 Gaylord O'Con
February 17 Walt Davis
 March 16 Nel Dorn Bryd
 April 20 Brenda Swenson
 May 18 Shirley Nichols
 Sept 21 Bill Dale/Ann Winchester
 October 19 Janet Rogers
 Nov 16 Darla Bostick
 December Holiday Party

New and Returning Members

New Members

Barbara Casey	Jarrell, Tx
Kim Hoerster	Georgetown, Tx
Wendy Moosavi	Georgetown, Tx
Robin Unruh	Anaheim, CA

Returning Members

(returning after being away for more than one year)

Gail Cooksey	Colleyville, Tx
--------------	-----------------

Refreshments at Monthly Meetings/Hospitality Chair

Our Hospitality Chair position is still open. To make it easier on the next Chairperson we are asking for members to contribute to our snack break yummies by bringing foods or your favorite 2-litre drinks. Favorites have been cheese, chips/dips, cookies, hummus and crackers, fruit, chocolate, cupcakes, popcorn in cups, nuts etc. The Hospitality Chair will bring cups, paper goods for plates/napkins and a table top. All contributions are greatly appreciated!

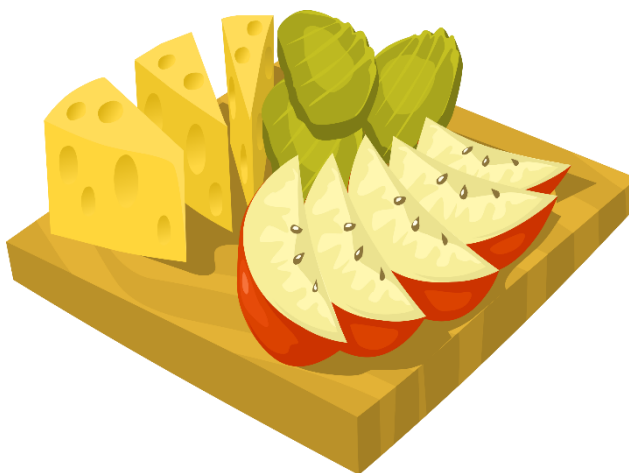


If you would like to offer your services for this position for 2020, please let Darla Bostick know (darlabostickart@gmail.com).

The Hospitality Chair is also responsible for coordinating our refreshments at 2 exhibitions: Our International at the downtown public library and the the Membership in the fall. If you are looking for a way to contribute some help to SWA this year, here is one position that is really appreciated! Perhaps you have a friend who could tag team with you if you may be absent a meeting or two.

So please make a quick stop at your pantry before you come to the meeting and bring something to share.

See you at the snack table!



January Demo Artist Gaylord O'Con

Gaylord, who is a member of Southwestern Watercolor Society (SWS), a two-time past SWS president and currently the Paintout Chair, started his demo by referencing a photo he took at a past Paintout in Mineola, Texas.



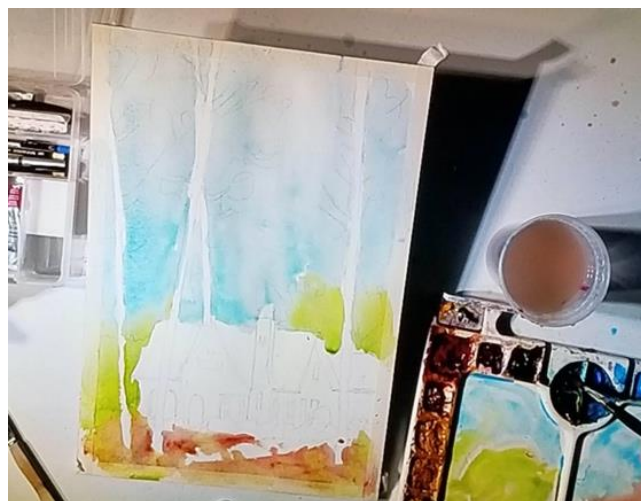
Inspiration Photo

Using a previously drawn sketch on Arches 140 cold press block, he masked off the edges of his painting block with tape that he would remove when his painting was completed to give an impression of being matted. He first washed in a light sky with Cerulean Blue (He stated that he always paints a light sky). He continued from the sky down into the foreground. This part of the painting is done pretty quickly. He slows down at the end of painting for the

details. He uses a broad brush at first and a needle brush for the later detail. He wanted the emphasis of the painting to be on the impact of the tall trees. A tip: mix dragon's blood with thalo green to make black. Gaylord's palette includes the following: **Holbein:** Raw Sienna, Greenish Yellow, Permanent Yellow Light; **MaimeriBlu** Dragon's Blood (brown madder); **Winsor Newton:** Cerulean Blue, Alizarin Crimson, French Ultramarine blue; **American Journey:** Burnt Umber, Yellow Ochre



A light, Cerulean Blue wash for the sky.



Painting the foreground.



Dragon's Blood+Phthalo Blue = Black.



Finished piece with tape removed.



2020 Juried International Exhibition

ENTRIES NOW BEING ACCEPTED!

April 19 – May 31, 2020

Fort Worth Central Library, Atrium Gallery

2020 EXHIBITION CALENDAR

March 8 - ENTRY DEADLINE

March 19 - Notification of Acceptance (via e-mail)

April 9 - Shipped artwork due date

April 18 - Hand delivered artwork due

April 20 - Juror Demo

April 21-24 - Juror Workshop

May 31 - Artist Reception & Awards Presentation

\$5,000 IN CASH plus Merchandise Awards

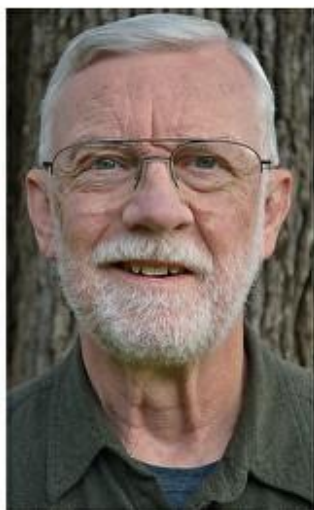
to be determined by the juror after viewing the installed works.

To view the Prospectus, click [here](#).



Juror: Brenda Swenson

February Demo Artist – Walt Davis



Walt Davis, signature member and past president of the Southwestern Watercolor Society, began painting in watercolor over thirty years ago. He studied first with Faith Helen Foust at Eastfield Community College then with Bud Biggs. He later attended workshops with Doug Walton, Louise Cadillac, Carole Barnes, Frank Webb, Mark Mehaffey, Richard Stephens, Joseph Zbukvitch, and noted bird artist John P. O'Neil.

Artist's Statement

I believe that pigment, dissolved in water, and applied to paper produces more luminous color than any other medium. Watercolor and acrylic are mercurial however-sometimes difficult, always full of surprises. I constantly weigh the importance of original intent against unexpected opportunities. For me, painting in

watercolor and acrylic is a series of negotiations with the medium often involving painful decisions, trade offs, and sacrifices. The ever-present risk of failure lends excitement to the process and makes success especially sweet.

I am inspired by the beauty nature produces when left to express itself according to its own needs and potentialities. Painting allows me to enter into that world and experience it in a more personal and intimate way. Hopefully, the resulting painting captures the essence of a creature or a place and allows the viewer to experience that essence more deeply as well.

The natural world is composed of essential elements (rocks, soil, water, plants, animals) playing their appointed roles according to fundamental principles. A work of art is composed of essential elements as well (line, shape, value, color, texture) obeying a different but no less fundamental set of principles. The challenge for the artist is to choreograph a delicate dance between art and nature coaxing the fundamental truth of one to illuminate the fundamental truth of the other.



Member News



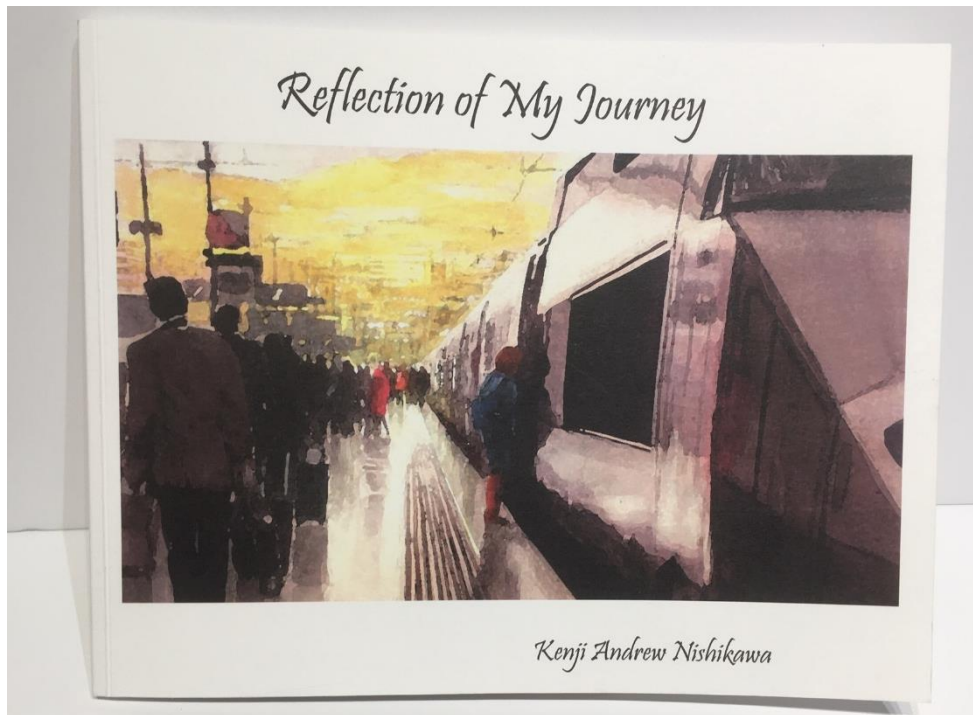
Chuck Markham of Hico Texas had two pieces accepted in the Texas Star juried art exhibit in Brownwood. His work was selected for the Don C. Memorial watercolor award.



Trish Poupard's painting, "First Bloom" was accepted into the Art Matters 2020 Juried Fine Art Exhibition & Sale at the Huntington Library, Art Collections and Botanical Gardens San Marino, CA.

Congratulations to **Kenji Nishikawa** on the publication of his new book “Reflections of My Journey”. We have enjoyed seeing Kenji’s beautiful watercolors at SWA and other

exhibitions for many years. His new book celebrates his 50th anniversary in settling in the USA. Kenji states that “This book is a historical reflection of what I painted in watercolor for the last 15 years.” The book is filled with Kenji’s beautiful watercolors of his travels in Europe, Asia and the USA. Bravo Kenji!



Suzy Pal is teaching sketching/drawing with ink, watercolor and gouache in Cloudcroft NM June 8-11 and also taking a group to Italy Sept 5-15.

Ann Winchester teaches watercolor classes for all skill levels on Wednesdays and Saturdays at 11:00 a.m. and 1:30 p.m. at the Hobby Lobby in Arlington, 4628 S Cooper Street. The classes are ongoing and the cost is \$20 per class. For more information or to sign up, call or text Ann at 817-308-1889. She also teaches a Friday class in Cleburne.

Heidi Russell sent in the following information about this show: “This is a great exhibition. I have participated in this event for the last 3 years and sold several paintings. The subject matter can be anything – it does not have to be related to the City of Fort Worth, although they do have one section that needs to relate to the city and include a relevant story.”



We are looking for new artists!

Each September Historic Fort Worth, Inc. produces a month-long event called **Preservation is the Art of the City®** at the Fort Worth Community Arts Center. In its 18th year, the primary component is an art show and sale that runs most of the month.

Jury Day will be Tuesday, February 25, 2020 at McFarland House 1110 Penn Street, Fort Worth, Texas.

Artists must be from the North Texas Metropolitan area. If you participated in the 2019 Preservation is the Art of the City Art Show, you do not need to sign up for Jury Day.

If you are new to the show or have not participated in the last 3 years, and would like to be considered for the 2020 Preservation is the Art of the City Show, **you must attend Jury Day.**

There is a limited number of slots available, sign up before they are filled!

[Sign up Here](#)

SWA membership runs on a calendar year January through December

You can join SWA anytime during the year. Our official membership campaign is in October as our regular year runs with the calendar: January through December. Those who join mid-year do not receive a discounted membership fee, but they are eligible for the membership juried show in the fall, which is for the 2020 members only. We will not be meeting during the summer months and will resume again in September.

We like new members...invite your friends! The first visit is free.

Membership includes these benefits:

- ✚ Fellowship with like-minded creative folks
- ✚ Post your art work on our Facebook page
- ✚ Free monthly SWA newsletter
[Http://www.facebook.com/SWAwatercolor](http://www.facebook.com/SWAwatercolor)
- ✚ Entry discount for any SWA show
- ✚ Free image on the SWA Members Gallery
- ✚ Annual Juried Membership Exhibition
- ✚ Buy space on the SWA Premium Gallery for \$20
- ✚ Annual Juried International Exhibition
- ✚ While maintaining SWA membership earn SWA Signature Membership after selection to 5 juried exhibitions our juried exhibitions (without disqualification)
- ✚ Asel Art Supply 20% discount
- ✚ Fun competitions
- ✚ December Holiday Party and painting swap
- ✚ ASEL Art of the Month Contest

Our Monthly meetings are held at the UNTHSC, Everett Building. After you turn from Camp Bowie to Clinton St turn left into a sloping parking lot beyond the vacant kiosk. We are on the bottom floor of the building to the right corner. Watch for a sign on the parking lot with directions to our room (or check the map on the website)

5:45pm Board Meeting
6:00pm Critique (bring in 1 or 2 works for some friendly advice)
7:00pm Brief business notices

Ongoing SWA Fundraisers (They help you to help us!)



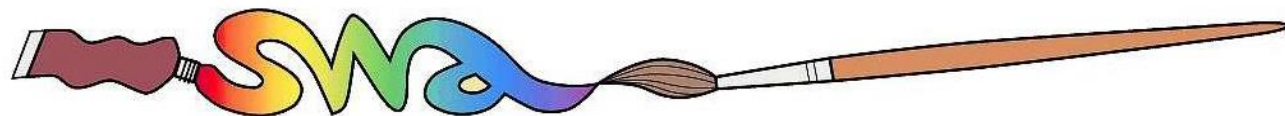
Kroger makes quarterly donations to SWA through your shopping! Go to www.krogercommunityrewards.com. If you already have a Kroger's Plus card, create your account and input your card number. In 7 to 10 days after shopping you will notice at the bottom of your receipt a donation was recorded for SWA.



Colors of Nature offers SWA members a 20% discount on their watercolors and customized brushes that are 100% vegan and cruelty-free. The savings are matched and donated back to SWA. The company will post member's art work created with their paints on their website, blog and direct people to a site of the artist's choice. SWA discount code: Members-20-SWA <http://shop.colorsofnature.com>.



Amazon Smile donates .05% of your online purchase back to SWA. Choose Society of Watercolor Artists as your nonprofit organization.



2020 SWA Officers and Standing Committee Members

2020 Board of Directors

President: *Darla Bostick*
President Elect: **OPEN**
Secretary: *Heidi Russell*

Exhibits: *Charlie Nieman*
Education/Workshop: *Bill Dale*
Treasurer: *Pat Banell*

Membership: **OPEN**
Communications: *Skeeter Murley*
Past President: *Janet Southern*

2020 Standing Committees

EDUCATION COMMITTEE

CHAIR: Bill Dale
ASEL Painting of the Month/Year: Sondra Carr/Mary House
Monthly Critique: Bob Cook
Programs: Shirley Nichols
Social Chairman (Refreshments/Receptions): **OPEN**
Workshop Chair: Bill Dale

PUBLICITY & COMMUNICATION COMMITTEE

CHAIR: Skeeter Murley
Newsletter Editor: Elaine Jary
Photography: Veronica Ritchey
Print Editor for Catalogs: Skeeter Murley
Publicity: **OPEN**
Website Manager: Skeeter Murley
Facebook & Twitter: Skeeter Murley
Demo/Asel Art Winner Photographer: Veronica Ritchey

EXHIBITION COMMITTEE

CHAIR: Charley Nieman
Hanging Volunteers: **OPEN (As many as possible!)**
Membership for Exhibitions: Rhonda Barefield
Monetary Entries for Exhibitions: Treasurer
SWA Signatures: Veronica Ritchey
Website Entries & Submissions: Skeeter Murley
Prize Sponsors: Court Bailey
President's Volunteer Exhibition: Darla Bostick, Shirley Nichols (assistant)

FINANCE AND MARKETING COMMITTEE

CHAIR: Pat Banell
Director of Finance & Budget: Pat Banell
Professional Standards (yearly audit): Jane Barrett

MEMBERSHIP COMMITTEE

CHAIR: **OPEN**
Director of Membership: **OPEN**
Greeters: **OPEN**
Editor of online Membership Directory: **OPEN**

MEETING VOLUNTEERS (Not a committee)

House & Properties: Shirley Nichols
Hospitality: **OPEN**
Painting of the Month: Sondra Carr/Mary House
Programs/Assistant to Demo Artist: Shirley Nichols