

# SWA

## Society of Watercolor Artists

*Fort Worth, Texas*

### Letter from the President – Darla Bostick

August 2020

Our world continues to seem a bit upside-down and we hope this newsletter finds you safe and healthy. When we first cancelled monthly meetings in March it was with the hope we could resume this fall. The first demo cancelled was a demo by Nel Dorn Byrd. Because we had to forego meeting due to the pandemic we optimistically planned to begin our fall schedule one month earlier, in August, and Nel agreed to provide a demo at that time. Unfortunately, the pandemic rages on and the UNTHSC is not allowing groups for the remainder of the year. We are seeing many “firsts” for SWA. Our International Juried Exhibition in April was well-received. It required the efforts of Charlie Nieman and Skeeter Murley to present it as a virtual show, Bill Dale working with our juror, Court Bailey with merchandise procurement, Janet Southern and Veronica Ritchey on membership/signature lists, Pat Banell with finances and more volunteer help too numerous to list here. There are so many who work behind the scenes and now it is time to begin our annual membership show! Our SWA Board had a zoom meeting to discuss that very thing. It was really nice to once again see the faces that make the wheels of SWA spin.



Our next big event is our membership show! By now I hope you have reviewed the prospectus for the Membership 2020 show. Your Exhibit Chair, Charlie Nieman, brought a host of new ideas to share. This will be the first online, or virtual, juried membership show for Society of Watercolor Artists. Many art associations have had to think “outside the box” as we all continue to offer exhibitions while home sheltering.

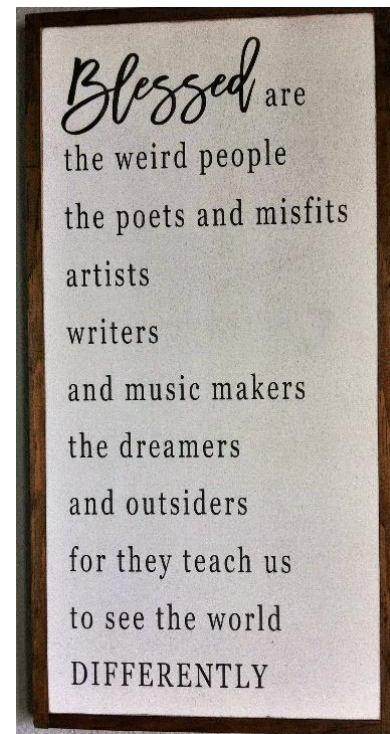
Janet Rogers, our juror, agreed to push our deadline for entries back to 15 September. Our workshop with Janet was cancelled and she will judge online. It isn't ideal for any of us and we hope to have her come another time and visit with a workshop.

Elaine Jary has been kind enough to provide us with extra newsletters during the summer months to keep us all in touch. We will continue this for the remainder of the year.

I wrote an article (located after this month's Member News) called "Inspiration for Painting" to help launch some new ideas your way.

In the meantime, I saw this sign some time ago in a studio and thought I would share it here.

Sending Blessings your way,  
Darla Bostick, president



## July Paintings of the Month – 18 paintings were entered!



**First Place:**  
Kathy Albright, "Summer Bliss"



**Second Place:**  
Gemma Haas, "Carpet Seller"

**Rules:** After winning 1st place, an artist retires from the competition for the remainder of the calendar year. Those who win 2nd place may continue to compete with other pieces of



work. Art work previously shown in a SWA juried exhibit is not allowed. The first place wins a \$25 Asel gift certificate and 2nd place wins a \$15 gift card.

## SWA Members' Exhibition 2020 - Entry Deadline: September 15

### Show dates: October 1 - November 30

Our Members Exhibition will be online this year due to the COVID-19 pandemic. Members will submit entries as we normally do, and our juror, Janet Rogers, will choose which paintings are accepted into the show. She will then choose among those selected paintings for awards.



If you haven't entered a juried show before, this is a great place to start, with SWA friends. The member show is for you, the SWA members, to shine.

View the prospectus for entry information and rules [here](#).



*Best of Show 2019 - Bill Dale*

## Member Spotlight on: Elaine Jary

**Where do you live?** I was born in Fort Worth and currently reside in Bedford. I have lived in this area my entire life; I'm a third generation Texan.

**When and why did you join SWA?** I joined in 2015 because I wanted to learn more about watercolor painting and meet other artists.

**What is your favorite thing about SWA?** The connection with other artists!

**How have you volunteered for SWA?** I have edited our newsletter since 2017.

**Tell us about your art background.**

I think I was born with a need to draw and create. As a child I had a shoebox full of hand drawn and colored paper dolls with complete and seasonal wardrobes. I took art classes throughout school, and eventually earned an undergraduate degree in Graphic Communication from UTA. I put art aside for many years for the most part. In 2011 I felt compelled to take it up again, and that's when I decided to learn watercolor painting. I bought a workbook and created the 12 paintings exactly as instructed. I took an online class from artist Joyce Faulknor. In 2013 I took my first ever art workshop, travelling with my husband to Dillman's Resort in northern Wisconsin to spend five days in Janet Roger's excellent workshop. Other workshops followed, and I painted and painted. I fashioned a small studio area in my breakfast room where I painted every day after work. I started entering juried shows, and sometimes got accepted. I'm still learning; every painting is a new experience.

**What is your philosophy about your art work?**

The tagline for Elaine Jary Fine Art is "Windows to Nature." I try to recreate the beauty I notice around me, and it almost always relates to nature whether it be flora or fauna. I feel that painting is how I can contribute in a positive way.

**What other hobbies or interests do you have?**

- I love to play golf. For a couple of years in a previous life I owned and operated a retail golf store in Southlake called Golf Etc.
- A couple of years ago I became interested in native plants and I've been working on converting my backyard to a native plant area to attract butterflies, hummingbirds and other creatures. It's a lot of work in the beginning (especially digging holes in my clay soil), but so satisfying to see the plants emerge in the spring and then bloom. I'm learning as I go.



- I have become a backyard birder (maybe a little more than just backyard; I love to visit the rookery in Dallas and other local birding spots) and always have



my camera handy to capture an interesting image.

Actually, I like to photograph all sorts of wildlife in my yard, such as Gregory the Texas spiny lizard and this

little guy to the right. It makes me happy plus I have an unlimited supply of reference photos for my paintings.

- My COVID-19 project that I started this summer is that I paint 5"x7" birds, mostly from my (thousands of) photographs. I sell these on my website for \$35 each, and for each painting sold I donate \$30 to Tarrant Area Food Bank. So far I've sold 33 paintings. I really enjoy painting these small paintings that I can usually finish in a couple of hours, and it's gratifying that people buy them, so we are contributing to a good cause together. I try to post about 20 paintings around the middle of each month.



*Carolina Wren*



*Red-bellied Woodpecker*



*Northern Cardinal*



Laurin McCracken was featured in the August 2020 issue of Watercolor Magazine, which

reaches 40,000 artists. The article is an explanation of how he achieves the rich, dark backgrounds in many of his paintings.





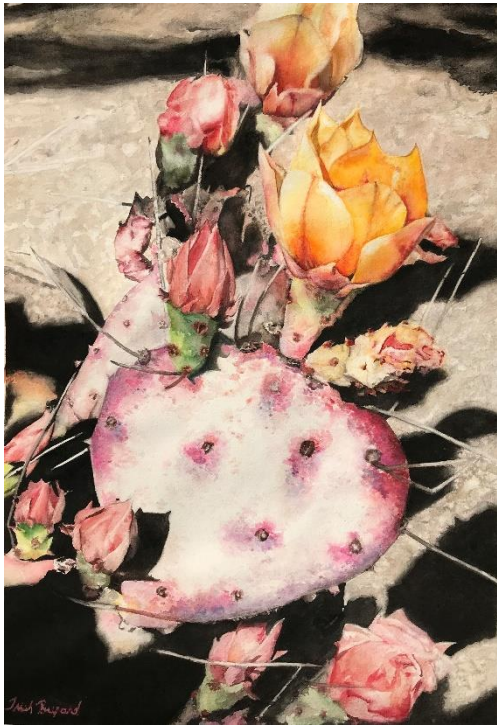
# Congratulations!

Our International Exhibition was extra special for two of our members who attained their Signature Status!

Congratulations to **Dianne Arnette** with her accepted painting "On the Verge" and **Suzy Ware** with her accepted painting "A Bridge Less Traveled."



**Suzy Powell** is taking a group to Tuscany Sept 5-15. Contact her for more information at [suzy\\_pal2000@yahoo.com](mailto:suzy_pal2000@yahoo.com).



**Trish Poupard's** "Huntington Cactus" won an honorable mention award in the August WASH (watercolor art society Houston) member's online show.



**Rebecca Krutsinger's** "Missing" (left) was juried into the San Diego Watercolor Society's 40th International Exhibition. This year, SDWS received 874 entries from throughout the United States and 22 other countries around the world. Juror Michael Reardon selected 100 paintings from this field of artwork. Also, "Hanging Out w/Friends and (Talking)" (above) has been accepted into the Kentucky Watercolor Society 2020 Aqueous USA Exhibition. Juror: Anne Abgott.



**Ann Winchester** teaches watercolor classes for all skill levels on Wednesdays and Saturdays at 11 a.m. and 1:30 p.m. at the Hobby Lobby in Arlington, 4628 S Cooper Street. Classes are ongoing and the cost is \$20 per class. For more information or to sign up, call or text Ann at 817-308-1889. She also teaches a Friday class in Cleburne.





**Celene Terry's** "Miss Gizmo" was juried into the Southwestern Watercolor Society's 57th Annual Membership Exhibition 2020 by juror Steve Rogers, opening September 2nd at the Blue House Too Gallery in Allen, TX.



From **Darla Bostick**: My painting "All Creatures Great and Small" is on display in August and September at The Annual Merging Visions Exhibition in Denton. I have 3 pieces in the MCL Grand Art Gallery for the Visual Arts of Lewisville Fresh Ideas Juried Exhibition. Due to the pandemic there will be no scheduled public reception but the gallery is open for viewing or you can see the images [here](#).

At Tierney's Tavern and Restaurant I have 3 large watercolor canvas prints (2' x 3') in the west dining room. The address is 208 E Main Street. Beginning 12 August the Visual Arts League of Lewisville will present Adventures in Wonderland in the north hallway. I will have two works included. Check my website for details on virtual presentation also.



**NeeluManish's** "Chevrolet 666" was selected for Exposition International 2020 D'Aquarelle Albi-France and HCMC Vietnam. "Violinist From San Diego" was selected for Sea Aquarelle International Festival Odesa For Ukraine. "Mr. Jefferson" and "The Commitment" (above left) were both selected for AquaZoom Int'l 2020 in Russia.

In addition, NeeluManish, NFWS, teaches online via Zoom (limited seats!):

\*Live Demonstrations    \*Step by Step Guidance    \*After Session One-On-One Guidance

Please contact for registration or more information: [neelumanishbhatia@gmail.com](mailto:neelumanishbhatia@gmail.com)



**Pam Johnston** sent us a few of the lovely floral paintings she's been working on the past few months during COVID-19.



Maybe you are thinking of a new painting. Alas, you must have your own reference materials! Okay, set aside those beautiful calendar images you saved, forget about National Geographic photos and don't even think about cruising the internet or taking photos from a television program for some ideas! Since copying is simply not an act of integrity...and is not allowed on any prospectus by art associations, let's think about what is allowed!

First, it must be your own property (although your officers voted to allow reference photos someone has given you permission to use for this next show only). Let's think about what you already have and then we'll see about getting some new reference materials. In the days before digital cameras, we all used film cameras and when the photos were developed those images went directly into photo albums. Dig out a few of your albums and take a fresh look at those old photos. Landscapes are easy to come by from your travels. Even if it is a well-known place, like Times Square or the Eiffel Tower or something a bit closer, maybe the Texas State Fair or a famous garden--there is most likely something you can use. If it is your own photograph, it is perfect for a new painting. Remember those trips and painting from them will be even more enjoyable! Even if the photo is old and discolored a bit, it is still valuable as a photo reference. Landscapes are easy to find, even if only from your backyard! Remember the beauty of that iris, or rose, or maybe a fountain you installed. They are all great for new paintings. Take a walk in the neighborhood if your yard or album doesn't offer enough inspiration. How about people? Maybe the photo you took of the hot dog vendor or one from your child's ball games would work or people along the streets while on vacation. Family reunion photos offer a goldmine of faces.

Still coming up uninspired? People are easy enough to take pictures of...the best ones are the ones when they didn't know you were ready with a camera. Use the zoom on your camera. Have it on the seat of the car and when you stop at a light, look around. Or, if you are in a city area put on your mask and venture out just a bit to window shop street side. Mannequins in store windows are easy to find and they don't mind having their picture taken! You may not even need to get out of the car.

In the mood to paint animals? Maybe a trip to the zoo isn't the best idea with the pandemic. Get creative to find less busy places. Small ponds have ducks, turtles, birds and more. If you live close to a university there is always a pond to be found. You may not even need to get out of your car. A dog park might offer some ideas. Want something larger? Drive a bit to the countryside and snap photos of cows, horses, goats or sheep. Texas is a big place and all those are seen without driving far.

Still empty handed? Not a problem. How about a still life? As artists, we like to arrange things in interesting ways. Take a browse through your home and notice what you have on the coffee table, the kitchen table or a night stand. Or, maybe you collect something that would provide terrific material for a painting. Maybe those interesting bottles, tea pots, a doll collection, time pieces or at the very least you can drag out some art supplies and arrange them in an interesting fashion. Every room where you live can offer a new painting if you take a new look.

Now, take a close look...really, really close. Go outside with a magnifying glass or binoculars. The insect world is waiting for you to notice. Right now cicadas are leaving behind exoskeletons they have outgrown, the baby birds have left the nest but it is still perched on the branch or maybe you will stumble upon an interesting pattern in the flagstone perfect for a non-objective piece.

The pandemic and staying inside has provided the perfect time to clean out our art studios. You might find a few paintings you never finished, or perhaps some you lost interest painting. Make yourself a goal to finish a few. Use some materials you rarely use and try something new. Gesso or white acrylic is a great way to erase past mistakes or soak the paper in water to allow the paints to lift and strike forward with a new plan. Paint with abandon! If it's a work you gave up some time ago, what can you lose?

At the end of the day, there is really no reason to be uninspired! Get busy and share your best as you enter the Membership Exhibition. With a deadline a month away there is time to beat the doldrums and create! Since our show is to be virtual, you don't have to bother framing your work. It couldn't be easier to participate this year and we are anxious to see what our members have been up to lately!

It is our plan to have the winning paintings make an appearance at our next meeting (when we can do that again!). We want to celebrate their accomplishment in our next show. See you online with our virtual exhibition! Happy painting!



## 2020 Calendar

The SWA Board Meeting is each month at 5:45pm the evening of the monthly meeting.

### **JANUARY**

27 Jan: Gaylord O'Con demo at meeting

### **FEBRUARY**

17 Feb: Walt Davis demo at meeting

### **MARCH**

16 March: Meeting Cancelled

### **APRIL**

20 April: Meeting Cancelled

Brenda Swenson judges virtual International Exhibition

### **MAY**

18 May: Meeting Cancelled

### **JUNE**

Presidential Invitational Exhibition, Keller postponed

### **JULY**

Deanna Thibault Workshop postponed

### **AUGUST**

17 August: Nel Dorn Byrd demo cancelled

### **SEPTEMBER**

15 September: Deadline to enter Juried Membership Exhibition

21 September: Meeting cancelled

### **OCTOBER**

19 October: Janet Rogers judges Membership Exhibition

19 October: Meeting cancelled

20-22 October: Janet Rogers workshop cancelled

### **NOVEMBER**

16 November: Meeting cancelled

16 November: ASEL Artist of the Year voted

### **DECEMBER**

## *SWA membership runs on a calendar year January through December*

You can join SWA anytime during the year. Our official membership campaign is in October as our regular year runs with the calendar: January through December. Those who join mid-year do not receive a discounted membership fee, but they are eligible for the membership juried show in the fall, which is for the 2020 members only. We will not be meeting during the summer months and will resume again in September.

## *We like new members...invite your friends! The first visit is free.*

Membership includes these benefits:

- ✚ Fellowship with like-minded creative folks
- ✚ Post your art work on our Facebook page
- ✚ Free monthly SWA newsletter  
<http://www.facebook.com/SWAwatercolor>
- ✚ Entry discount for any SWA show
- ✚ Free image on the SWA Members Gallery
- ✚ Annual Juried Membership Exhibition
- ✚ Buy space on the SWA Premium Gallery for \$20
- ✚ Annual Juried International Exhibition
- ✚ While maintaining SWA membership earn SWA Signature Membership after selection to 5 juried exhibitions our juried exhibitions (without disqualification)
- ✚ Asel Art Supply 20% discount
- ✚ Fun competitions
- ✚ December Holiday Party and painting swap
- ✚ ASEL Art of the Month Contest

Our Monthly meetings are held at the UNTHSC, Everett Building. After you turn from Camp Bowie to Clinton St turn left into a sloping parking lot beyond the vacant kiosk. We are on the bottom floor of the building to the right corner. Watch for a sign on the parking lot with directions to our room (or check the map on the website)

5:45pm Board Meeting  
6:00pm Critique (bring in 1 or 2 works for some friendly advice)  
7:00pm Brief business notices

## *Ongoing SWA Fundraisers (They help you to help us!)*



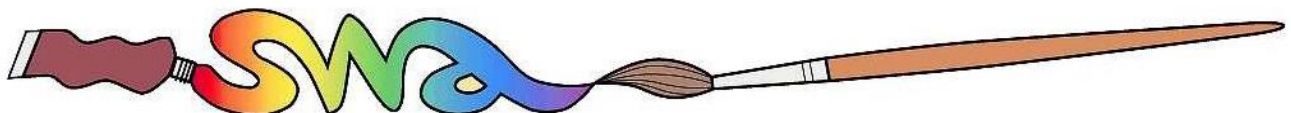
Kroger makes quarterly donations to SWA through your shopping! Go to [www.krogercommunityrewards.com](http://www.krogercommunityrewards.com). If you already have a Kroger's Plus card, create your account and input your card number. In 7 to 10 days after shopping you will notice at the bottom of your receipt a donation was recorded for SWA.



Colors of Nature offers SWA members a 20% discount on their watercolors and customized brushes that are 100% vegan and cruelty-free. The savings are matched and donated back to SWA. The company will post member's art work created with their paints on their website, blog and direct people to a site of the artist's choice. SWA discount code: Members-20-SWA <http://shop.colorsofnature.com>.



Amazon Smile donates .05% of your online purchase back to SWA. Choose Society of Watercolor Artists as your nonprofit organization.





# **2020 SWA Officers and Standing Committee Members**

## **2020 Board of Directors**

**President:** *Darla Bostick*  
**President Elect:** **OPEN**  
**Secretary:** *Heidi Russell*

**Exhibits:** *Charlie Nieman*  
**Education/Workshop:** *Bill Dale*  
**Treasurer:** *Pat Banell*

**Membership:** *Janet Southern*  
**Communications:** *Skeeter Murley*  
**Past President:** *Janet Southern*

## **2020 Standing Committees**

### **EDUCATION COMMITTEE**

CHAIR: Bill Dale  
ASEL Painting of the Month/Year: Sondra Carr/Mary House  
Monthly Critique: Bob Cook  
Programs: Shirley Nichols  
Social Chairman (Refreshments/Receptions): **OPEN**  
Workshop Chair: Bill Dale

### **PUBLICITY & COMMUNICATION COMMITTEE**

CHAIR: Skeeter Murley  
Newsletter Editor: Elaine Jary  
Photography: Veronica Ritchey  
Print Editor for Catalogs: Skeeter Murley  
Publicity: **OPEN**  
Website Manager: Skeeter Murley  
Facebook & Twitter: Skeeter Murley  
Demo/Asel Art Winner Photographer: Veronica Ritchey

### **EXHIBITION COMMITTEE**

CHAIR: Charley Nieman  
Hanging Volunteers: Mary Bell, Alan McGrew (open to more)  
Membership for Exhibitions: Rhonda Barefield  
Monetary Entries for Exhibitions: Treasurer  
SWA Signatures: Veronica Ritchey  
Website Entries & Submissions: Skeeter Murley  
Prize Sponsors: Court Bailey  
President's Volunteer Exhibition: Darla Bostick, Shirley Nichols (assistant)

### **FINANCE AND MARKETING COMMITTEE**

CHAIR: Pat Banell  
Director of Finance & Budget: Pat Banell  
Professional Standards (yearly audit): Jane Barrett

### **MEMBERSHIP COMMITTEE**

CHAIR: Janet Southern  
Director of Membership: **OPEN**  
Greeters: **OPEN**  
Editor of online Membership Directory: Skeeter Murley

### **MEETING VOLUNTEERS** (Not a committee)

House & Properties: Shirley Nichols  
Hospitality: **OPEN**  
Painting of the Month: Sondra Carr/Mary House  
Programs/Assistant to Demo Artist: Shirley Nichols