

# SWA

## Society of Watercolor Artists

*Fort Worth, Texas*

### Letter from the President

February 2019

One month has already past by this year. My how time flies when one is trying to prepare for a show. The deadline always seems to creep up on me until I only have a week to finish my entry. I hope you are making much more progress than I am since March 10<sup>th</sup> is just around the corner. Good luck getting your entry ready!



We had a good turnout for our January meeting and I hope everyone enjoyed it as much as I did. Bill Dale's demo kept us all in rapt attention. I have always admired his portraits and was glad that was what he demonstrated. Hopefully, everyone else enjoyed seeing his process as much as I did.

Bill has also been working on setting up workshop artists for the future. If we want to have a well known artist come to SWA, contact has to be made well in advance. Case in point: Iain Stewart was contracted back in 2016 to be here this year. He was booked that far in advance! So, now we need your help. At our meeting next month, I want you to tell us your top 3 artists who you would like to see come to SWA to give a workshop. We will take these suggestions, tally up the results, and start contacting the top contenders. And, if we get enough response, maybe we can have more than 2 workshops per year. Just let us know if you would be interested since it is a lot of work to set these up and it would be a shame if we had to cancel them due to lack of interest.

Finally, I want to thank all of those who have stepped up (current AND past volunteers) to help in the various capacities it takes to keep SWA running. You are greatly appreciated by all!

Happy Painting, Janet

## Painting of the Month

SWA members are invited to bring a completed piece to our monthly meeting. The artwork is shown anonymously with each member in attendance voting for their favorite. After winning 1st place, an artist retires from the competition for the remainder of the calendar year. Those who win 2nd place may continue to compete with other pieces of work. Art work previously shown in a SWA juried exhibit is not allowed. The first place wins a \$25 Asel gift certificate and 2nd place wins a \$15 gift card. Many thanks to Mary T House who chairs this fun event for us each month! Be sure and thank Asel Art Supply when you shop at 825 Foch Street.



## January Painting of the Month



First Place:  
Sondra Carr,  
"Castaway"

Second Place:  
Court Bailey,  
"Chandor Gardens"





## 2019 Demo Artists

January 28	Bill Dale
February 18	Barry Selman
March 18	Randy Meador
April 22	Iain Stewart
May 20	Jo Williams
Sept 16	David Tripp
October 21	Judi Betts
Nov 18	Ann Winchester
December	Christmas Party



Barry Selman,  
“Waiting for Breakfast”

## January Demo – Bill Dale

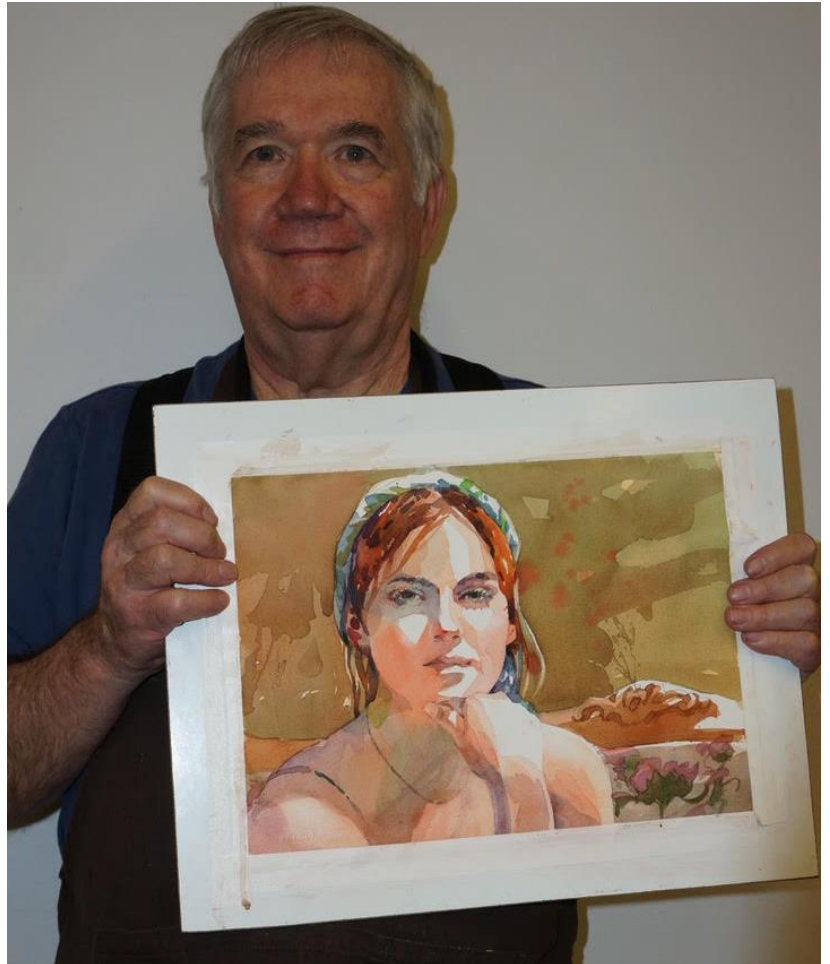
Bill demonstrated how he creates his beautiful portraits using transparent layers of color. He talked about how he begins a painting by doing a quick value study using Payne’s gray to make decisions about what to leave in or remove in the painting. Doing this gives you a map or preview of what you’ll be doing, and it allows you to make corrections and adjustments before you create the painting. It’s



also much faster than doing a graphite value drawing of your painting during the planning process. Bill’s palette for portraits (skin colors) is Scarlet Lake, Aurelian Yellow, and Peacock Blue, augmented with Mineral Violet and/or Hooker’s Green. Bill always tests his color mixes on scrap paper before painting. A few other tips that Bill shared as he painted:

- He keeps washes light; they serve as a marker for adding additional washes.

- Princeton Elite synthetic brushes are good for lifting color.
- Bill traces the image before painting, and often shades in some of the darker values with graphite to use as a reference when painting.
- Bill employs hard edges, but with very light glazes. He often softens some edges while the paint is fresh.
- He likes to paint the dark side of the face first, leaving the rest white, and then lift hard edges on the white paper before painting the rest of the face.
- Bill mixed plenty of paint for the background colors and used a squirrel mop brush to cover a lot of paper quickly.
- Bill uses the app Procreate to experiment with different values on a photograph while planning his painting. He also traces the photo in Procreate and then prints it onto watercolor paper in various sizes for his value studies and final painting (what a great timesaver!).



## Treasury Report

January bank balances:

Checking	\$14,112.98
Building Fund:	<u>\$15,654.01</u>
Total:	\$29,766.99



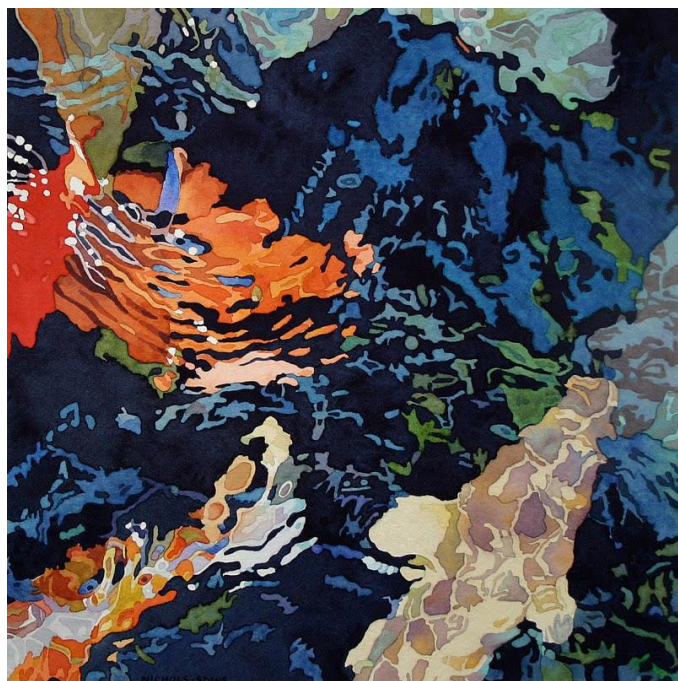
## February Demo Artist – Barry Seldon

I do not have a formal art education so I consider myself self-taught. I took one watercolor class in the early 1970s. Since having retired 3 years ago I have taken several classes from Nationally known watercolor artists. I have developed my own style over the years, painting mostly Texas and Southwest landscapes. Recently I have started painting a few abstracts. I have taught many watercolor classes around Texas, and I am represented by galleries in Granbury, Midland and Fredericksburg.





## Member News



Mr. Mike Nichols' painting "Phantom Koi" has been accepted into the 108th Annual Gold Medal Exhibition of the California Art Club.

"Between Two Worlds" was accepted into the Watercolor Art Society-Houston's 42nd International Watermedia Exhibition by Juror Andy Evansen.







Karen Lindeman's painting "Memorial Waters" is accepted into the Watercolor Society-Houston's 2019 International Exhibition, opening March 3.



Les McDonald Jr.'s painting "Riding High" was accepted into the Watercolor Society-Houston International Exhibit. This is his 7<sup>th</sup> acceptance. The reception is March 3<sup>rd</sup>, 3:30pm.



Bill Dale's painting "Alicia and the Botticelli" was accepted into the 43<sup>rd</sup> Western Federation of Watercolor Societies (WFWS) show, which takes place in San Diego this year.



Member Suze Powell will be teaching two workshops in June as follows:

June 3-6 Cloudcroft NM

<http://cloudcroftart.com/artists/powell/index.htm>

June 9-14 Dillmans Bay Resort (Wisconsin)

<http://www.dillmans.com/dcaf/2019/suzy-powell.html>

Member Kathy Cuning has joined the Cleos Creation Consignment Gallery at Hulen Mall.



## Botanical Art Exhibit 2019 - Art in Bloom

### Call for submissions - - Prospectus and guidelines

The Botanical Art Collective of North Central Texas is pleased to announce an open call for a curated exhibition at the Botanical Research Institute of Texas (BRIT) from May 10th, 2019 to June 20th 2019. A reception will be held on Friday, May 10th, 2019 from 5.30 pm to 7.30 pm.

Artists may submit up to three (3) pieces of art featuring botanical subjects, in any medium. Approximately 50-60 art pieces will be accepted and there will be a "People's Choice Award" following the opening reception.

The \$25 submission fee covers up to 3 submissions. Only 2D art will be displayed.

Flowers, fruits, seeds, vegetables, fungi, seeds, trees, plants, and grasses are welcome. This is a celebration of the world of botany.

To review the prospectus and guidelines and to register and pay the submission fee please go the BRIT website at **<http://brit.org/art-brit/botanical-art-collective-north-central-texas>**. Follow the links to register for the show and pay \$25 via PayPal or credit card. The button for this is near the top of the left hand side of the first page.



## ***SWA membership runs on a calendar year January through December***

You can join SWA anytime during the year. Our official membership campaign is in October as our regular year runs with the calendar: January through December. Those who join mid-year do not receive a discounted membership fee, but they are eligible for the membership juried show in December which is for the 2018 members only. We will not be meeting during the summer months and will resume again in September.

## ***We like new members...invite your friends! The first visit is free.***

Membership includes these benefits:

- ✚ Fellowship with like-minded creative folks
- ✚ Post your art work on our Facebook page
- ✚ Free monthly SWA newsletter  
<http://www.facebook.com/SWAwatercolor>
- ✚ Entry discount for any SWA show
- ✚ Free image on the SWA Members Gallery
- ✚ Annual Juried Membership Exhibition
- ✚ Buy space on the SWA Premium Gallery for \$20
- ✚ Annual Juried International Exhibition
- ✚ While maintaining SWA membership earn SWA Signature Membership after selection to 5 juried exhibitions our juried exhibitions (without disqualification)
- ✚ Asel Art Supply 20% discount
- ✚ Fun competitions
- ✚ December Holiday Party and painting swap
- ✚ ASEL Art of the Month Contest

Our Monthly meetings are held at the UNTHSC, Everett Building. After you turn from Camp Bowie to Clinton St turn left into a sloping parking lot beyond the vacant kiosk. We are on the bottom floor of the building to the right corner. Watch for a sign on the parking lot with directions to our room (or check the map on the website)

5:45pm Board Meeting  
6:00pm Critique (bring in 1 or 2 works for some friendly advice)  
7:00pm Brief business notices

## ***Ongoing SWA Fundraisers (They help you to help us!)***



Kroger makes quarterly donations to SWA through your shopping! Go to [www.krogercommunityrewards.com](http://www.krogercommunityrewards.com). If you already have a Kroger's Plus card, create your account and input your card number. In 7 to 10 days after shopping you will notice at the bottom of your receipt a donation was recorded for SWA.

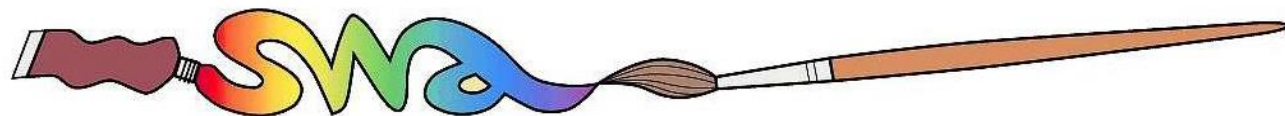


Colors of Nature offers SWA members a 20% discount on their watercolors and customized brushes that are 100% vegan and cruelty-free. The savings are matched and donated back to SWA. The company will post member's art work created with their paints on their website, blog and direct people to a site of the artist's choice. SWA discount code: Members-20-SWA <http://shop.colorsofnature.com>.



Amazon Smile donates .05% of your online purchase back to SWA. Choose Society of Watercolor Artists as your nonprofit organization.





## **2019 SWA Officers and Standing Committee Members**

### **2019 Board of Directors**

**President:** Janet Southern  
**Secretary:** Darla Bostick  
**Treasurer:** Pat Banell

**Exhibits:** Skeeter Murley  
**Education/Workshop:** Bill Dale

**Membership:** Rhonda Barefield  
**Communications:** Skeeter Murley  
**Past President:** John Nickell

### **2019 Standing Committees**

#### **EDUCATION COMMITTEE**

**CHAIR:** Bill Dale

*Members are:*

ASEL Painting of the Month/Year: Suzanne McNeill-Sparks

Monthly Critique: Bob Cook

Programs: **OPEN**

Social Chairman (Refreshments/Receptions): Dawn

Kerbs/Veronica Ritchey

Workshop Chair: Bill Dale

#### **EXHIBITION COMMITTEE**

**CHAIR:** Skeeter Murley

*Members are:*

Hanging Volunteers: Skeeter Murley, Bill Dale, Janet Southern

Membership for Exhibitions: Rhonda Barefield

Monetary Entries for Exhibitions: Treasurer

SWA Signatures: Veronica Ritchey

Website Entries & Submissions: Skeeter Murley

Prize Sponsors: Court Bailey

#### **MEETING VOLUNTEERS** (Not a committee)

House & Properties: **OPEN**

Hospitality: Dawn Kerbs/Veronica Ritchey

Painting of the Month: Suzanne McNeill-Sparks

Programs/Assistant to Demo Artist: **OPEN**

#### **PUBLICITY & COMMUNICATION COMMITTEE**

**CHAIR:** Skeeter Murley

*Members are:*

Newsletter Editor: Elaine Jary

Photography: Veronica Ritchey

Print Editor for Catalogs: Skeeter Murley

Publicity: **OPEN**

Website Manager: Skeeter Murley

Website Consultant: Sharon Giles

Facebook & Twitter: Skeeter Murley

#### **FINANCE AND MARKETING COMMITTEE**

**CHAIR:** Pat Banell

*Members are:*

Director of Finance & Budget: Pat Banell

Fantastic Fans: Shirley Nichols

Professional Standards (yearly audit): Brenda Morgan

#### **MEMBERSHIP COMMITTEE**

**CHAIR:** Rhonda Barefield

*Members are:*

Director of Membership: Rhonda Barefield

Greeters: Shirley Nichols, Linda Taylor, Suzy Ware