

# SWA

## Society of Watercolor Artists

*Fort Worth, Texas*

September 2018

### ***Letter from the President***

It's September already! I can't believe how fast this year has gone. As I sit here today thinking of what to say and how much is still left to do, I am overwhelmed. I just finished my entry for the show last week, just in time. I think that was the hardest thing to get done. I started more paintings than I care to admit. But, that is one milestone that has been accomplished. I imagine others have had a similar experience.

Speaking of the Membership show, the juror now has the images of the entries and is making up her mind. We should know something on or just after the September meeting. Then comes the installation and I am asking for volunteers to help install. The more people helping, the quicker it goes and the less strain it puts on our aging bodies.

It has come to my attention that the UNT atrium where we will have the show has done some renovation to the space. The lighting has been improved, the walls have changed, and there is a new hanging system. I plan on taking a look before the meeting on Monday to see for myself.

As I announced in previous meetings, I plan on this being my last year as president. I have enjoyed myself tremendously but I think it is time to inject new "blood" into the leadership of SWA. So, if you think you might consider taking on the role, please step forward. I can remain on the board as a past president, if needed, just as a helper (not to vote) to pass along details of the past two years. So, please be thinking about it and talk among yourselves and encourage one another to get involved. If we don't get involved in the workings of SWA, then sooner or later we will fall apart. I never want to see that happen!

Enough of my preaching. I hope to see all of you at the meeting on Monday,

Janet



## ***ASEL ART AWARDS Artist of the Month Competition***

SWA members are invited to bring a completed piece to our monthly meeting. The artwork is shown anonymously with each member in attendance voting for their favorite. After winning 1st place, an artist retires from the competition for the remainder of the calendar year. Those who win 2nd place may continue to compete with other pieces of work. Art work previously shown in a SWA juried exhibit is not allowed. The first place wins a \$25 Asel gift certificate and 2nd place wins a \$15 gift card. In

November all first place pieces during 2018 will return for selection of "Artist of the Year." Many thanks to Mary T House who chairs this fun event for us each month! Be sure and thank Asel Art Supply when you shop at 825 Foch Street. Plan to bring your art to our next meeting **September 17, 2018.**



## ***2018 Demo Artists***

<b>January</b>	Nancy Maas	<a href="https://nmaas.com/">https://nmaas.com/</a>
<b>February</b>	Darla Bostick	<a href="https://www.darlabostick.com/">https://www.darlabostick.com/</a>
<b>March</b>	Michael Holter	<a href="http://michaelholter.com/">http://michaelholter.com/</a>
<b>April</b>	Don Andrews	<a href="https://www.donandrewsstudio.com/">https://www.donandrewsstudio.com/</a>
<b>May</b>	Cecy Turner	<a href="http://www.cecycyturner.com/">http://www.cecycyturner.com/</a>
<b>September</b>	Sarah Graham Harman	<a href="https://www.facebook.com/SarahGrahamArt/">https://www.facebook.com/SarahGrahamArt/</a>
<b>October</b>	Justin Burns	Golden Artist Products
<b>November</b>	Bev Boren	<a href="http://bevboren.com/">http://bevboren.com/</a>
<b>December</b>	Christmas Party	

## ***Important 2018 Dates***

<b>Sept 26-28</b>	Ric Dentinger Workshop - <a href="#">Website</a>
<b>Oct 1-Dec 1</b>	SWA Membership Juried Exhibition

***September Workshop with  
Ric Dentinger:  
Painting with Passion and Drama***

***Note: One spot open!***

September 26-28, 9 am to 4 pm  
St John's Episcopal Church  
2401 College Ave., Ft Worth, Tx 76110

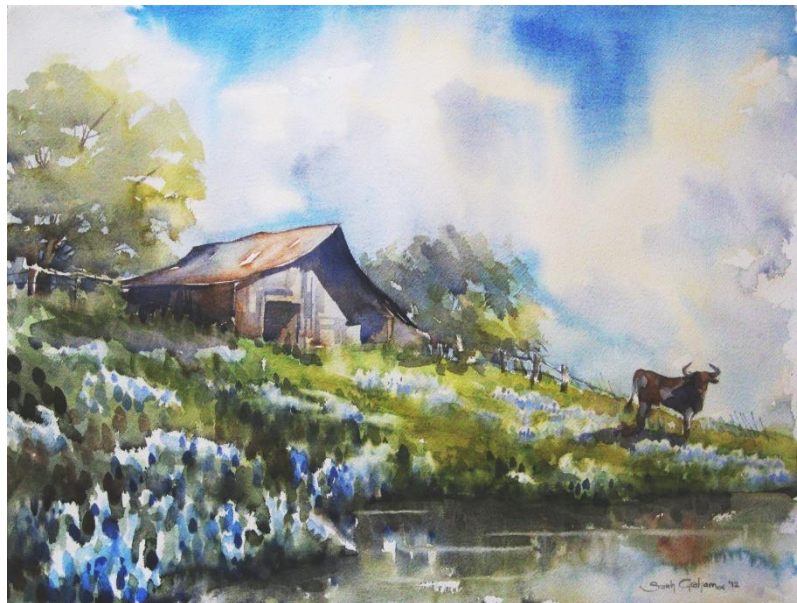
Subject: Watercolor Landscapes  
All levels of experience can participate in this workshop.

Sign up online [here](#)

Questions: Bill Dale at [swaworkshop@gmail.com](mailto:swaworkshop@gmail.com).



***September Demo Artist Sarah Graham Harman***



## Survey Results

*We will be going over the results of a few of the other survey questions at our meeting on Monday, 9/17.*

### How often do you paint?

15.8%	Daily
47.4%	Multiple Times a Week
15.8%	A Few Times Each Month
5.3%	Maybe Once a Month
3.5%	Occasionally
12.3%	Not Near Enough!

### What brand of watercolor paints do you most commonly use?

28.3%	Winsor & Newton
26.7%	Daniel Smith
12.5%	American Journey (Cheap Joe's)
10.0%	Holbein
4.2%	Other
3.3%	M. Graham
3.3%	Schmincke
1.7%	Da Vinci
2.5%	Grumbacher
1.7%	QoR
1.7%	Sennelier
1.7%	Van Gogh
0.8%	Dick Blick
0.8%	Rembrandt
0.8%	Whatever is on Sale
0.0%	Master's Touch (Hobby Lobby)
0.0%	Old Holland

### What is your favorite brand of watercolor paper?

80.7%	Arches
7.0%	Fabriano
3.5%	Saunders
3.5%	Strathmore
1.8%	Canson
1.8%	Lanaquarelle
1.8%	Whatever is on Sale!

## Survey Results cont'd

What is your favorite subject to paint?	
33.3%	Whatever Inspires Me
17.5%	Portraits
14.0%	Landscapes
14.0%	Still Life
10.5%	Other *
5.3%	Daily Life
3.5%	Animals/Wildlife
1.8%	Cityscapes
0.0%	Abstract
* Flowers, Abstract People, Rust & Vintage Chrome, Variety	
Do you typically enter your paintings into SWA Exhibitions?	
50.9%	Yes - Both the International
8.8%	Only the International Exhibition
10.5%	Only the Members Show
29.8%	No, I Don't
Would you consider volunteering to help on one of the following?	
3.4%	As a Board Meeting
3.4%	As a Committee Chair
10.2%	As a Committee Member
25.4%	I May Be Interested If I Knew More Details
57.6%	Not Really Interested In Volunteering At This Time
How satisfied are you with our watercolor association?	
50.9%	5 Stars
38.2%	4 Stars
10.9%	3 Stars
0.0%	2 Stars
0.0%	1 Stars
Average Rating - 4.40	

## Member News



**Jane Stoddard's**  
"Touristi" was accepted  
into the Pennsylvania  
Watercolor Society 39th  
International Juried  
Exhibition. "Still Water"  
was accepted into the 2018  
Adirondack National  
Exhibition of American  
Watercolor.





**Brenda Drigger's** "Anni" was accepted into the 33rd Annual Bosque Art Classic and received the New Entrant Award.



**Heidi Russell's** "All Tied Up" was awarded one of ten prizes at Historic Fort Worth's exhibit, Preservation is the Art of the City.



**Mary Bell** won second place in the watercolor division of the Northwest Art Association Exhibition with "Mission Concepcion."



**Karen Lindeman** 's  
"Stepping into Autumn"  
was awarded 3rd place  
at the Watercolor Art  
Society-Houston's  
"Memories of Summer"  
exhibit on September  
9th. Judge: Gerry Finch



**Laurin McCracken** will be juror of selection for The 152nd Annual International Exhibition of the American Watercolor Society in 2019. He will also be the juror for The Transparent Watercolor Society's 2019 Exhibition. "Trains" was accepted in the 13th Annual Exhibition of the International Guild of Realism. That exhibition will be October 5 - October 29 at the Sugarman-Peterson Gallery in Santa Fe, NM. "Black, White and Red" was accepted in The 1st Universal Watercolor Exhibition 2018. That Exhibition will be from October 21 - November 5, 2018, at the Xishi Grand Theater, Zhuji, China.



**Darla Bostick** showed work at the Richardson Public Library on Arapaho Rd in their Summer Show and Sale and in Lewisville at Tierney's in June. The Botanical Research Institute of Texas's Botanical Art Collective of North Central Texas held its first juried exhibition and two of Darla's paintings were accepted. In the Breckenridge 27th Annual Juried Art Show her "Ladies of Lamu, Kenya" was accepted and in the Trinity Art Guild's Juried Show Darla won 1st place in the 3-D category with "Thirsty" (left). Her acceptance into the 55th Southwestern Watercolor Society Membership Show earned her signature status. The show is scheduled at the Eisemann Center in Richardson the month of September. Her wall sculpture "Thirsty Too" won the Jeanne Heartsilll Honorable Mention Award in the Visual Arts Society of Texas Membership Show.

### ***And in other member news,***

**Connie Logan-Levsen** won Honorable Mention at the Irving Arts Association Animal Art Show in the painting division.

**Court Bailey** won Art of the Month at the September Trinity Arts Guild meeting.

**Valerie Cranston** won Honorable Mention at the Breckenridge 27th Annual Juried Art Show at the Breckenridge Fine Arts in Breckenridge, TX.

## ***SWA membership runs on a calendar year January through December***

You can join SWA anytime during the year. Our official membership campaign is in October as our regular year runs with the calendar: January through December. Those who join mid-year do not receive a discounted membership fee, but they are eligible for the membership juried show in December which is for the 2018 members only. We will not be meeting during the summer months and will resume again in September.

## ***We like new members...invite your friends! The first visit is free.***

Membership includes these benefits:

- ✚ Fellowship with like-minded creative folks
- ✚ Post your art work on our Facebook page
- ✚ Free monthly SWA newsletter  
[Http://www.facebook.com/SWAwatercolor](http://www.facebook.com/SWAwatercolor)
- ✚ Entry discount for any SWA show
- ✚ Free image on the SWA Members Gallery
- ✚ Annual Juried Membership Exhibition
- ✚ Buy space on the SWA Premium Gallery for \$20
- ✚ Annual Juried International Exhibition
- ✚ While maintaining SWA membership earn SWA Signature Membership after selection to 5 juried exhibitions our juried exhibitions (without disqualification)
- ✚ Asel Art Supply 20% discount
- ✚ Fun competitions
- ✚ December Holiday Party and painting swap
- ✚ ASEL Art of the Month Contest

Our Monthly meetings are held at the UNTHSC, Everett Building. After you turn from Camp Bowie to Clinton St turn left into a sloping parking lot beyond the vacant kiosk. We are on the bottom floor of the building to the right corner. Watch for a banner on the parking lot with directions to our room (or check the map on the website)

5:45pm Board Meeting  
6:00pm Critique (bring in 1 or 2 works for some friendly advice)  
7:00pm Brief business notices

## ***Ongoing SWA Fundraisers (They help you to help us!)***



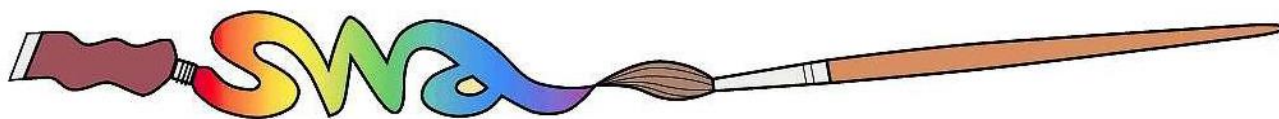
Kroger makes quarterly donations to SWA through your shopping! Go to [www.krogercommunityrewards.com](http://www.krogercommunityrewards.com). If you already have a Kroger's Plus card, create your account and input your card number. In 7 to 10 days after shopping you will notice at the bottom of your receipt a donation was recorded for SWA.



Colors of Nature offers SWA members a 20% discount on their watercolors and customized brushes that are 100% vegan and cruelty-free. The savings are matched and donated back to SWA. The company will post member's art work created with their paints on their website, blog and direct people to a site of the artist's choice. SWA discount code: Members-20-SWA <http://shop.colorsofnature.com>.



Amazon Smile donates .05% of your online purchase back to SWA. Choose Society of Watercolor Artists as your nonprofit organization.



## **2018 SWA Officers and Standing Committee Members**

### **2018 Board of Directors**

**President:** Janet Southern

**Secretary:** Dawn Kerbs

**Treasurer:** Pat Banell

**Exhibits:** Skeeter Murley

**Education/Workshop:** Bill Dale

**Membership:** Mary Bell

**Communications:** Skeeter Murley

**Past President:** John Nickell

### **2018 Standing Committees**

#### **EDUCATION COMMITTEE**

CHAIR: Bill Dale

*Members are:*

ASEL Painting of the Month/Year: Mary T House

Monthly Critique: Bob Cook

Programs: Alice Hoener

Social Chairman (Refreshments/Receptions): Rhonda Barefield

Workshop Chair: Bill Dale

#### **PUBLICITY & COMMUNICATION COMMITTEE**

CHAIR: Skeeter Murley

*Members are:*

Newsletter Editor: Elaine Jary

Photography: Veronica Ritchey

Print Editor for Catalogs: Skeeter Murley

Publicity: **OPEN**

Website Manager: Skeeter Murley

Website Consultant: Sharon Giles

Facebook & Twitter: Skeeter Murley

#### **EXHIBITION COMMITTEE**

CHAIR: **OPEN**

*Members are:*

Hanging Volunteers: Skeeter Murley, Bill Dale, Janet Southern

Membership for Exhibitions: Mary Bell

Monetary Entries for Exhibitions: Treasurer

SWA Signatures: Veronica Ritchey

Website Entries & Submissions: **OPEN**

Prize Sponsors: **OPEN**

#### **FINANCE AND MARKETING COMMITTEE**

CHAIR: Pat Banell

*Members are:*

Director of Finance & Budget: Pat Banell

Fantastic Fans: Shirley Nichols

Professional Standards (yearly audit): Brenda Morgan

#### **MEMBERSHIP COMMITTEE**

CHAIR: Mary Bell

*Members are:*

Director of Membership: Mary Bell

Greeters: Shirley Nichols, Linda Taylor, Suzy Ware

#### **MEETING VOLUNTEERS** (Not a committee)

House & Properties: **OPEN**

Hospitality: Rhonda Barefield

Painting of the Month: Mary T House

Programs/Assistant to Demo Artist: **OPEN**