

SWA

Society of Watercolor Artists

Fort Worth, Texas

Volunteer Spotlight – Rhonda Barefield

October 2019

Hello everyone, my name is Rhonda Barefield and I have been a member with SWA for 9 years now. I started helping with donations for three years, then coordinating food for the shows as well as the meetings. My current position is membership chair; however, I truly need someone to take this position for the coming year. I do not have a compatible computer with SWA nor Skeeter who runs all our data on a PC. My MAC doesn't have the same programs. If you are interested in this position please let me or Janet know.



I have a degree in art and have been teaching art for over twenty years. I currently teach at 2 private schools here in Fort Worth. I enjoy taking classes from other artists as well, not only to learn a new technique but also to learn how to teach better. I have won many awards with my art from SWA, WAA, GAA and NTAA; however none of those compare to the excitement I have when one of my students receives an award from libraries, the Fort Worth stock show or the State Fair. I'm so proud of them.

Here are a few of my pieces; I hope you enjoy them.



Painting of the Month

SWA members are invited to bring a completed piece to our monthly meeting. The artwork is shown anonymously with each member in attendance voting for their favorite. After winning 1st place, an artist retires from the competition for the remainder of the calendar year. Those who win 2nd place may continue to compete with other pieces of work. Art work previously shown in a SWA juried exhibit is not allowed. The first place wins a \$25 Asel gift certificate and 2nd place wins a \$15 gift card. Many thanks to Suzanne McNeill-Sparks who chairs this fun event for us each month! Be sure and thank Asel Art Supply when you shop at 825 Foch Street.



September Paintings of the Month



First Place:
Hollan Holmes,
"American Rustic"

Second Place:
Trish Poupard,
"Soaring Above"



2019 Demo Artists

January 28	Bill Dale
February 18	Barry Selman
March 18	Randy Meador
April 22	Iain Stewart
May 20	Ann Winchester
Sept 16	David Tripp
October 21	Judi Betts
Nov 18	Jo Williams
December	Christmas Party

New and Returning Members



New Members

Klata Peacock	Arlington, TX
Mike Steele	Kennedale, TX
Barbara Watson	Arlington, TX

Returning Members

(returning after being away for more than one year)

Paula Johnson	Arlington, TX
----------------------	---------------

September Demo Artist David Tripp

At the September meeting, artist David Tripp treated attendees to an exploration of the esoteric side of art as well as a demo of how he creates his paintings of exquisite evergreen trees. He began by discussing how various authors and philosophers describe creative expression. From the ancient Greek physician Hippocrates: ““Life is short, art long, opportunity fleeting, experience treacherous, judgment difficult.” Creativity can be seen as a mysterious force; inspiration is the “wind that blows.” Other sources for exploring the inspiration for artistic expression include Harold Bloom’s book “The Daemon Knows”, “The Art Spirit” by Robert Henri, and “Drawing Closer to Nature” by Peter London. David talked about his own experience with creative inspiration, describing a perfect morning during a stay in South Fork, Colorado where the beauty of the landscape and the peaceful isolation led to a new process he created during a plein air session painting evergreen trees. His five-step process uses liquid mask as well as items to create texture such as a toothbrush, stale bread crumbs and salt. The result is a painting that



reflects the peaceful beauty of the trees and surrounding landscape in an interpretive, somewhat abstract style. His color template includes Quin Red, Prussian Blue, Payne's Gray, Transparent Yellow, Alizarin Crimson, Winsor Green. David is also working on a series he calls *Turvey's Corner 63050*, an imaginary place where he paints actual structures from his past or that he discovers, usually aged and sometimes abandoned, that have a special character. He writes an accompanying story about the structure that further personalizes the painting for the viewer.



Member Exhibition

October 1 – November 30
2019 Juried SWA Member Show

Juror:

Judi Betts

Reception:

Saturday, November 2, 2-4 pm

Location:

UNT Health Science Center
Gallery

\$3,000 in Awards

(cash and merchandise)

We Need You!



Member News

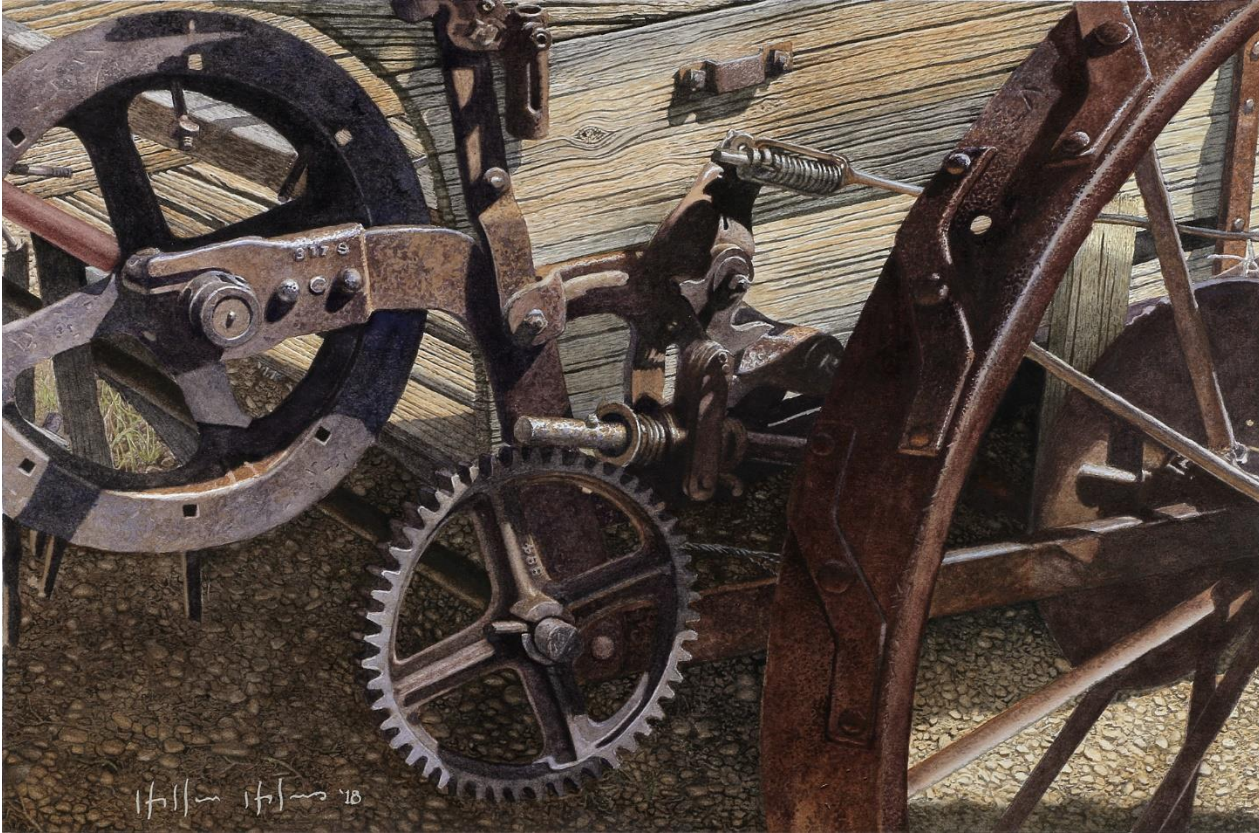


Ann Patton's painting "On Mustang Creek" was juried into the American Plains Artists 34th Annual Juried Exhibit and Sale. The roving show will be held this year at the Pearce Museum at Navarro College in Corsicana. The exhibit will be open from October 10 until January 4, 2020, and is juried by Sonya Terpening.



Bill Dale's painting "Sundance" took "Silver Medal Water Media" in the Bosque Art Classic. His painting "A Thought" received the "HK Holbein / Golden Paints award" in the 56th Southwestern Watercolor Society Membership Exhibition.





Hollan Holmes won First Place at the Abilene Center for Contemporary Arts' CCAN 2019 national art show, juried by Gary Bukovnik, with his watercolor "Industrial Revolution I".

Janet Southern's painting, "Chanel", was voted 3rd place at the September SWS Painting of the Month.





Go with the Flow!
WASH Annual Open Watercolor Exhibition 2019
September 3 - 29, 2019



Reception and Awards
 September 14
 5:30 - 8:00 PM

Music by Deb Smith
 Folk Rock Guitarist

At the
Sacramento Fine Arts Center
 5330-B Gibbons Dr.
 Carmichael, CA 95608
 916-971-3713
sacfinearts.org/washweb/

Gallery Hours
 Tue 11 am - 7 pm
 Wed-Fri 11am - 3 pm
 Sat-Sun 11am - 5 pm

WASH
 Watercolor Artists of
 Sacramento Horizons

Go with the Flow! 2019
 Honorable Mention
 Neelu Manish
 Space Needle

From Neelu Manish: My painting "Fades Before Hangover" was accepted in the Alaska Watercolor Society 2019 Annual exhibition. "Blue Heron" was accepted in the Niagara Frontier Watercolor Society 14 International Exhibition. "Space Needle" was accepted in WASH Annual Open Watercolor Exhibition 2019 and received honorable mention.



Michael Holter won 2nd Place at the 65th Southwestern Watercolor Society Awards Reception for his painting "Smoke Gets in Your Eyes".



Many thanks to the members who helped hang the SWA Member Show!

From Shirley Nichols: Registration is now open for the 2020 Color Concepts Classes taught by Shirley Nichols. Seats are limited so if you're interested she can be reached at 817-247-9091 or senichols@flash.net.

Ginny Hoppe of Wylie, Texas received two first place and one third place ribbons for her paintings accepted in the Fine Arts class of the Creative Arts at the State Fair of Texas.

Ann Winchester's "Loli #7" won the Merchandise Award at The 56th Annual Southwestern Watercolor Society Membership exhibition.

SWA membership runs on a calendar year January through December

You can join SWA anytime during the year. Our official membership campaign is in October as our regular year runs with the calendar: January through December. Those who join mid-year do not receive a discounted membership fee, but they are eligible for the membership juried show in the fall, which is for the 2019 members only. We will not be meeting during the summer months and will resume again in September.

We like new members...invite your friends! The first visit is free.

Membership includes these benefits:

- ✚ Fellowship with like-minded creative folks
- ✚ Post your art work on our Facebook page
- ✚ Free monthly SWA newsletter
[Http://www.facebook.com/SWAwatercolor](http://www.facebook.com/SWAwatercolor)
- ✚ Entry discount for any SWA show
- ✚ Free image on the SWA Members Gallery
- ✚ Annual Juried Membership Exhibition
- ✚ Buy space on the SWA Premium Gallery for \$20
- ✚ Annual Juried International Exhibition
- ✚ While maintaining SWA membership earn SWA Signature Membership after selection to 5 juried exhibitions our juried exhibitions (without disqualification)
- ✚ Asel Art Supply 20% discount
- ✚ Fun competitions
- ✚ December Holiday Party and painting swap
- ✚ ASEL Art of the Month Contest

Our Monthly meetings are held at the UNTHSC, Everett Building. After you turn from Camp Bowie to Clinton St turn left into a sloping parking lot beyond the vacant kiosk. We are on the bottom floor of the building to the right corner. Watch for a sign on the parking lot with directions to our room (or check the map on the website)

5:45pm Board Meeting
6:00pm Critique (bring in 1 or 2 works for some friendly advice)
7:00pm Brief business notices

Ongoing SWA Fundraisers (They help you to help us!)



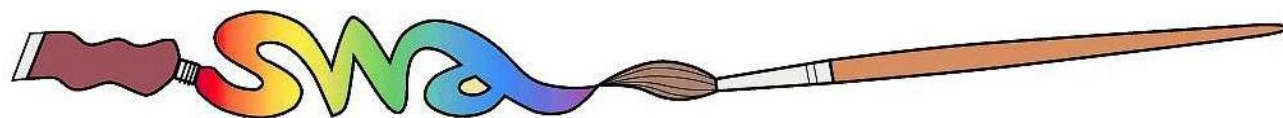
Kroger makes quarterly donations to SWA through your shopping! Go to www.krogercommunityrewards.com. If you already have a Kroger's Plus card, create your account and input your card number. In 7 to 10 days after shopping you will notice at the bottom of your receipt a donation was recorded for SWA.



Colors of Nature offers SWA members a 20% discount on their watercolors and customized brushes that are 100% vegan and cruelty-free. The savings are matched and donated back to SWA. The company will post member's art work created with their paints on their website, blog and direct people to a site of the artist's choice. SWA discount code: Members-20-SWA <http://shop.colorsofnature.com>.



Amazon Smile donates .05% of your online purchase back to SWA. Choose Society of Watercolor Artists as your nonprofit organization.



2019 SWA Officers and Standing Committee Members

2019 Board of Directors

President: Janet Southern
Secretary: Darla Bostick
Treasurer: Pat Banell

Exhibits: Skeeter Murley
Education/Workshop: Bill Dale

Membership: Rhonda Barefield
Communications: Skeeter Murley
Past President: John Nickell

2019 Standing Committees

EDUCATION COMMITTEE

CHAIR: Bill Dale

Members are:

ASEL Painting of the Month/Year: Suzanne McNeill-Sparks

Monthly Critique: Bob Cook

Programs: **OPEN**

Social Chairman (Refreshments/Receptions): Dawn

Kerbs/Veronica Ritchey

Workshop Chair: Bill Dale

EXHIBITION COMMITTEE

CHAIR: Skeeter Murley

Members are:

Hanging Volunteers: Skeeter Murley, Bill Dale, Janet Southern

Membership for Exhibitions: Rhonda Barefield

Monetary Entries for Exhibitions: Treasurer

SWA Signatures: Veronica Ritchey

Website Entries & Submissions: Skeeter Murley

Prize Sponsors: Court Bailey

MEETING VOLUNTEERS (Not a committee)

House & Properties: **OPEN**

Hospitality: Dawn Kerbs/Veronica Ritchey

Painting of the Month: Suzanne McNeill-Sparks

Programs/Assistant to Demo Artist: **OPEN**

PUBLICITY & COMMUNICATION COMMITTEE

CHAIR: Skeeter Murley

Members are:

Newsletter Editor: Elaine Jary

Photography: Veronica Ritchey

Print Editor for Catalogs: Skeeter Murley

Publicity: **OPEN**

Website Manager: Skeeter Murley

Website Consultant: Sharon Giles

Facebook & Twitter: Skeeter Murley

FINANCE AND MARKETING COMMITTEE

CHAIR: Pat Banell

Members are:

Director of Finance & Budget: Pat Banell

Fantastic Fans: Shirley Nichols

Professional Standards (yearly audit): Brenda Morgan

MEMBERSHIP COMMITTEE

CHAIR: Rhonda Barefield

Members are:

Director of Membership: Rhonda Barefield

Greeters: Shirley Nichols, Linda Taylor, Suzy Ware