

**SOCIETY OF
WATERCOLOR ARTISTS***Fort Worth, Texas**From the President...*

Dear Friends,

November is already here and pretty soon we will be celebrating the Holidays and New Year! Time does fly! I am sure you are enjoying and cherishing the change of the seasons.

SWA had a wonderful meeting/demo and a workshop in October. It never fails to elicit such a joy to watch and learn from **Cecy Turner's** demonstration. Her landscape and floral paintings are consistently refreshing and inspiring <https://www.cecycyturner.com>. I heard many great comments from those who attended the demo and/or the workshop.

In our next meeting in November 21, we are honored and pleased to have **Tina Bohlman** <https://www.tinabohlman.com> as our demo artist. She is famous of capturing the personalities of her landscapes and buildings. Please come and enjoy.

Thanks to our Exhibition Chair, **Skeeter Murley**, and many wonderful **volunteers**, our annual members' exhibition is set up and showing in the atrium of the Health Science Center. More than 50 pieces were selected for the show, which is beautiful – I must say. The reception and award ceremony will be held on November 19. Please come, and better yet, bring your friends and families to enjoy this event. By the way, **Laura Hannah**, has volunteered and was elected to be our future Exhibition Chair. Congratulations, Laura! We are excited to have you onboard!

Lastly, for the sustainable existence and growth of the Society, I feel that succession planning of key positions in the Board is very important. One of the key positions is the Chairperson responsible in organizing our monthly demos. (There are eight demos per year.) The task mainly involves identifying and booking demo artists, as well as related logistics. We are fortunate that our current Chair, **Shirley Nichols**, has been absolutely dedicated and doing a great job. She has already booked many of next year's artists, so the new Chair will only need to focus on the year after and perhaps an occasional vacant spot. If you think you can help in this capacity, please let me or other Board members know. Please rest assured that Shirley and all Board members will give you all our help to ease you into the position. I thank you in advance.

I look forward to seeing you again in our next meeting! Happy painting!

Kind regards,

Iok-Hou (Yoko)

Email: ipang@sbcglobal.net

**Inside This Issue**

President's Message

Next Meeting Information

2022 Members' Exhibition

Member's News

*Welcome to New Members &
Thank You to Asel Art Supply*

Fundraising Info

2022 Calendar

SWA Information Station

**Happy
Thanksgiving!****Follow Us!**

Next Meeting...

Monday, Nov. 21ST

7:00pm

UNT Health Science Center

Guest Demo Artist **Tina Bohlman**

Artwork critiques begin at 6:30
Bring a piece of your artwork,
and **Ann Winchester** will critique
your work. It's a great way to get
free advice from a pro!



**Our meetings
are held at the**

UNT Health Science Center

3500 Camp Bowie Blvd. Fort Worth

**Masks are not required
to attend one of our meetings.**

There is plenty of room to spread out to
encourage social distancing.

We want everyone to have fun and feel
safe at the same time.



A Texas native, Tina Bohlman has used her home state as both the inspiration and the canvas for her art. A self-taught artist, Tina is well versed in several mediums but favors watercolor and oil to create breathtaking plein air paintings and brilliant rural landscapes.

She is a veteran of numerous competition plein air and "quick draw" events annually, including Plein Air Easton (Maryland), Plein Air Southwest - Outdoor Painters Society, Shadows on the Tesche-New Iberia, LA, Sedona Plein Air Festival-Sedona AZ, En Plein Air Texas-San Angelo, TX, and Paint the Parks-Estes Park CO.

In a career span of over 50 years, she has made quite an impact in her field earning more than 60 awards - two-thirds within the past 10 years - including 4 Best in Show titles. In addition to exhibiting, participating in competition events and taking commissions for her work, she is the President of Outdoor Painters Society - a nationally recognized plein air artist's organization with over 300 members. Her work is collected worldwide; her originals hang in private and corporate collections in 34 states, Canada, Mexico, United Kingdom, Portugal, Germany, Australia, New Zealand and Republic of Benin, West Africa.

January Demo Artist – Bev Boren

January 23, 2023

2022 Juried Members' Exhibition

ARTIST RECEPTION & AWARDS CEREMONY

Join us **Saturday, November 19th at 2pm** as we announce the awards for the 2022 Juried Members' Exhibition.

We'll have small dishes & snacks to enjoy during the reception.

We are asking for individuals to bring food based on the first letter of their last name.

A - M Savory (Chips & Dip, Chees, Appetizers)
L - Z Sweets (Cookies, Desserts, Fruit)

We hope you will join us for a wonderful afternoon of art, food & friends! We hope to have a full gallery of people enjoying the beautiful artwork.

UNT Health Science Center – Atrium Gallery 3500 Camp Bowie Blvd. Fort Worth, Texas



SWA MEMBER NEWS



Les McDonald Jr's painting *Shopping in San Jose (Baja, Mexico)* was selected as a finalist in Splash 23: The Best of Watercolor Competition.
Juror – Mary Whyte



Les's painting *The Old Days* won an Honorable Mention award in the Watercolor Art Society – Houston Annual Membership Show
Juror – Ken Call



Christine Alfery's painting *Gypsy* was accepted into the Cincinnati Arts Clubs ViewPoint 54 Exhibition.
Juror – Tamera Lenz Munte
It was also accepted in the Pennsylvania Watercolor Society's 43rd International Juried Exhibition.



Christine's painting *As The Wind Blows* won 3rd Place in the 1st Annual West Texas Watercolor Society's National Juried Exhibition.
Juror – Karen Knutson



Iok-Hou Pang's painting *Cogito* won 2nd place in watercolor in the 2022 Grand Prairie Juried Art Show.



Tom Brown's painting *Summer Morning in Larkspur* was accepted into the Plein Air Painters of New Mexico Member's show.

Jurors – Patrick Saunders, Brienne Browne, & Desmond O'Hagan



Ann Patton's painting *Cowbirds in the Cold Morning* was awarded the Silver Medal Water Media at the 37th Annual Bosque Classic at the Bosque Art Center.

Juror – Mikel Donahue

**WE LOVE TO SHARE NEWS
OF YOUR ACCEPTANCE INTO SHOWS,
OR AWARDS WON!**

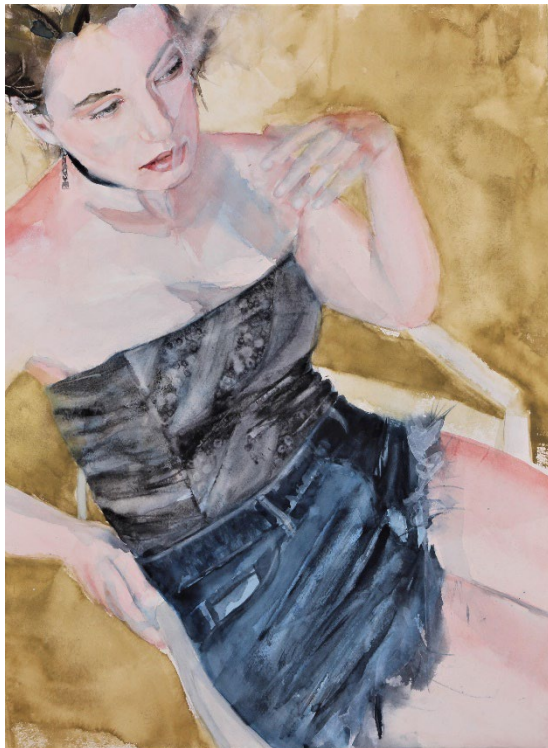
Please send us information you would like to share, and we will get it in the next newsletter.

SWA MEMBER NEWS!



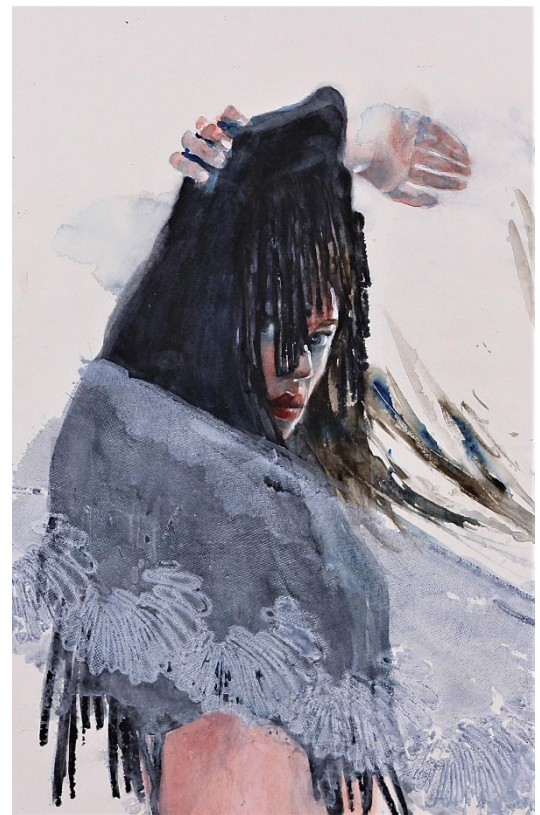
Rebecca Krutsinger has had multiple paintings accepted into shows across the country. Here are a just a few of her paintings.

Fair Winds (right) was accepted into the Mad River Valley Arts Green Mountain 10th Annual Watercolor Exhibition. Rebecca won the Best New Artist award. Juror – Sarah Yeoman



Cut Offs (above) was accepted into the Philadelphia Watercolor Society's 122 Anniversay International Exhibition of Works on Paper. Juror – Ken Call

On The Fringe (right) was accepted into the Vermont Watercolor Society's 2022 Fall Awards Show. Juror – Andy Evansen



Welcome

New Members

**We like to welcome new members to our watercolor society,
along with returning members from years past.**

Grady Hemphill – Fort Worth, Texas

Klata Peacock – Arlington, Texas

Marion Pollard – Arlington, Texas

Thank You!



**ASEL ART
SUPPLY**

Asel Art Supply has donated prizes to the SWA Painting of the Month contest for many years. We want to thank them for the many years of support!

As you may know, Asel is in the process of closing all of their stores by the end of 2022. They currently are advertising **50% Off Everything**.

Please consider supporting this local business as a way to say thank you for supporting local art associations for over 50 years.

ONGOING SWA FUNDRAISERS



An easy way for you to help us out!

These companies support charitable organizations like SWA by donating a portion of their sales with you, directly to us.

We hope you'll consider choosing SWA when shopping with these companies.



AmazonSmile is a simple way for you to support your favorite charitable organization every time you shop, at no cost to you. AmazonSmile is available at smile.amazon.com on your web browser and can be activated in the Amazon Shopping app for iOS and Android phones. When you shop with AmazonSmile, you'll find the exact same low prices, vast selection and convenient shopping experience as Amazon.com, with the added benefit that AmazonSmile will donate 0.5% of your eligible purchases to the Society of Watercolor Artists. Once you set our organization of choice as SWA, every time you shop from Amazon Smile, you're helping us!



Kroger makes quarterly donations to SWA through your shopping! Go to www.krogercommunityrewards.com . If you already have a Kroger's Plus card, create your account and input your card number. In 7 to 10 days after shopping you will notice at the bottom of your receipt a donation was recorded for SWA.

COLORS OF NATURE

Colors of Nature offers SWA members a 20% discount on their watercolors and customized brushes that are 100%

vegan and cruelty-free. The savings are matched and donated back to SWA. The company will post member's artwork created with their paints on their website, blog and direct people to a site of the artist's choice. SWA discount code: Members-20-SWA
<http://shop.colorsofnature.com>

If you are aware of any other companies that donate to organizations like ours, please feel free to send us a note, and we'll add them to the list. Thanks!



SWA

P.O. Box 471571
Fort Worth, Texas
76147

www.swawatercolor.com

BOARD OF DIRECTORS

PRESIDENT

Iok Hou Pang

PAST PRESIDENT

Darla Bostick

SECRETARY

Vicki Rowley

TREASURER

Janet Southern

EDUCATION/WORKSHOP

Shirley Nichols

COMMUNICATIONS

Skeeter Murley

MEMBERSHIP

Skeeter Murley

Exhibition Chair

Skeeter Murley

2022

2022 CALENDAR

Our meetings are held at the UNT Health Science Center
3500 Camp Bowie Blvd. in Fort Worth, Tx.

January 24 – Laurin McCracken - *Marketing your Art on Social Media*

February 21 – Michael Holter - Demo Artist

March 21 – Ann Winchester & Bill Dale – Demo Artists

April 18 – Laurin McCracken – Demo

April 19 – 22 – Laurin McCracken Workshop

May 16 – Hollan Holmes – Demo Artist

July 18-21 – Stephen Zang Workshop – *Portraits that Captures*

September 19 – John Cogley, Daniel Smith Artist's Material Demo

October 17 – Cecy Turner – Demo Artist

October 18 & 19 - Cecy Turner Workshop

November 21 – Tina Bohlman - Demo Artist

Masks are not required to attend the meetings.
There is a lot of room inside the room for social distancing.
We really do want everyone to have fun & feel safe.

**Your SWA Board Members continues to
hold regular monthly meetings via Zoom .**

If you have any questions or suggestions,
please send them to Iok-Hou Pang at
ipang@sbcglobal.net

If you have any news you would like
to share in future e-mails, please feel
free to send it our way. We've set
up a new e-mail address for you to
send all of your newsletter info to.

swa.membernews@gmail.com



SWA INFORMATION STATION

SWA memberships runs on a calendar year January through December

You may join SWA anytime during the year. Our official membership campaign begins in October as our regular year runs with the calendar: January through December. Those who join mid-year do not receive a discounted membership fee, but they are eligible for the membership juried show in the fall, which is for current members only. We will not be meeting during the summer months and will resume in September.

We like new members...invite your friends!



SWA Membership includes these benefits:

- ✚ Fellowship with like-minded creative folks
- ✚ Free monthly SWA newsletter
- ✚ Entry discount for any SWA show
- ✚ Free image on the SWA Members Gallery
- ✚ Annual Juried Membership Exhibition
- ✚ Annual Juried International Exhibition
- ✚ ASEL Art of the Month Contest
- ✚ While maintaining active SWA membership, earn SWA Signature Membership after selection to 5 SWA juried exhibitions (without disqualification)
- ✚ Asel Art Supply 20% discount
- ✚ Fun Competitions!
- ✚ December Holiday Party and Gift Exchange

Our Monthly meetings are held at the UNT Health Science Center building in Fort Worth. After you turn from Camp Bowie to Clinton St turn left into a sloping parking lot beyond the vacant kiosk. We are on the bottom floor of the building to the right corner. Watch for a sign on the parking lot with directions to our room (or check the map on the website)

6:30pm Artwork Critique (bring in 1 or 2 works for some friendly advice) Ann Winchester – Artwork Critique Artist

7:00pm Member meeting begins after a few brief business notices

EDUCATION COMMITTEE

CHAIR: Shirley Nichols

ASEL Painting of the Month/Year: Harvey Youngblood

Monthly Critique: Ann Winchester / Court Bailey

Programs: Shirley Nichols

Programs/Assistant to Demo Artist: **AVAILABLE**

Social Chairman (Refreshments/Receptions): **AVAILABLE**

Workshop Chair: Shirley Nichols

House & Properties: Shirley Nichols

EXHIBITION COMMITTEE

CHAIR: Skeeter Murley

Hanging Volunteers: **AVAILABLE**

SWA Signatures: Veronica Ritchey

Prize Sponsors: Skeeter Murley

MEETING VOLUNTEERS (Not a committee)

Hospitality: **AVAILABLE**

PUBLICITY & COMMUNICATION COMMITTEE

CHAIR: Skeeter Murley

Newsletter Editor: **AVAILABLE**

Photography: Veronica Ritchey

Print Editor for Catalogs: Skeeter Murley

Publicity: **AVAILABLE**

Website Manager: Skeeter Murley

Facebook, Instagram & Twitter: Skeeter Murley

FINANCE AND MARKETING COMMITTEE

CHAIR and Director of Finance & Budget: Janet Southern

Professional Standards (yearly audit): **AVAILABLE**

MEMBERSHIP COMMITTEE

CHAIR and Director of Membership: Skeeter Murley

Greeters: **AVAILABLE**

Editor of Online Membership Directory: Skeeter Murley