

SWA

Society of Watercolor Artists

Fort Worth, Texas

IMPORTANT ANNOUNCEMENT

March 2020

In response to the ongoing efforts to prevent the spread of coronavirus (Covid-19) the **SWA Board of Directors has made the decision to cancel the March member meeting.** We do plan to add another meeting in August with the demo artist being Nel Dorn Byrd. We hope you understand these extraordinary measures and look forward to seeing everyone for the April meeting with our juror and demo artist Brenda Swenson as we look forward to our International Juried Exhibition.

Please take care of yourselves, enjoy the Spring weather and keep painting!

Letter from the President – Darla Bostick



Do you ever feel like you just don't have enough hands to get it all done? The picture was taken recently in Nepal with some new travel friends as we visited the UNESCO World Heritage Sites in Pagan. As I was searching for a pic to include this month, this one seemed to fit, even if it is silly. Earlier I asked how are you plugging into SWA? Would you believe I asked 47 people to fill a spot in some capacity. Your officers and our other volunteers are worthy of many thanks! We still

have a place where YOU can help "lend a hand!" Let someone on your Board know how you can give back! There is a special, FREE exhibit to honor our volunteers in June in Keller.

It's always fun to socialize with our membership at the monthly meetings and I always come home with a new friend! Truly, the fellowship with others of the same

creative mind is a fun experience! As I was sifting through our new membership directory posted online (a huge thank you to Skeeter), I noticed how far our membership reaches. Do you know we stretch as far as Hawaii to the west and MA and NY to the east? There are other members along both coasts, some in the middle and then we add many international members through our International Juried Exhibition.

What is important to you as a member or friend of SWA? For me, it encouraged me to paint better and try new techniques, subjects, materials. Through our workshops I benefitted from those who know far more than I. The demos have always inspired me to go home and get that brush ready. The next painting just might be my best! A friend of mine, Nel Dorn Byrd, makes painting look easy! She is known primarily for her wonderful subject matter and use of color. You won't want to miss her upcoming demo! Also along the lines of education, be sure to read of our terrific upcoming summer workshop in July! See you then!

Oh, and don't forget to bring some snackies to share at the meeting! I'm always looking for a few tasty calories!

Darla Bostick

Painting of the Month

SWA members are invited to bring a completed piece to our monthly meeting. The artwork is shown anonymously with each member in attendance voting for their favorite. After winning 1st place, an artist retires from the competition for the remainder of the calendar year. Those who win 2nd place may continue to compete with other pieces of work. Art work previously shown in a SWA juried exhibit is not allowed. The first place wins a \$25 Asel gift certificate and 2nd place wins a \$15 gift card. Many thanks to Sondra Carr and Mary House, who co-chair this fun event for us each month! Be sure and thank Asel Art Supply when you shop at 825 Foch Street.



February Paintings of the Month



First Place:
Trish Poupon,
"Busy"

Second Place:
Adela McGrew,
"Venetian Window"



2020 Demo Artists

January 27	Gaylord O'Con
February 17	Walt Davis
March 16	Mtg Cancelled
April 20	Brenda Swenson
May 18	Shirley Nichols
August 17	Nel Dorn Bryd
Sept 21	Bill Dale/Ann Winchester
October 19	Janet Rogers
Nov 16	Darla Bostick
December	Holiday Party

New and Returning Members

New Members

Nathan Johnson	Burleson, Tx
Kathy Lloyd	Fort Worth, Tx
Tim McKinley	Fort Worth, Tx
Laura Rugg	Fort Worth, Tx
Barbara Holmes	Burleson, Tx
Carla Gauthier	Houston, Tx
Kerry Stratton Waltz	Clearwater, Fl

International Show - All entries were received in good order. We had a total of 81 entries, almost the same as last year, with 185 paintings submitted. Of the paintings submitted, 74 were from the USA, with 49 coming from Texas. We had two entries from China, one from India, two from Canada, and two from Malaysia. The paintings all looked wonderful and I am glad I am not the one to make the decisions which to include in the show. We should have notifications out to every entrant by March 20. **Please come help us hang the show on April 18 and don't forget the reception on May 31.**



2019 Best of Show - Leaving Home by Eileen Sudzina

Member Show - I fully realize that we just finished receiving submissions for the International Show, and it might seem a little early to begin talking about the Membership Show this fall. However, I noticed that last year we ended with approximately 170 members and there were only about 70 entries for the membership show. So, I want to learn what can be done to get more of our members to submit for this show. I realize not everyone feels confident enough to enter the show, and sometimes you just can't get your painting finished in time to submit. But we have been talking about trying to adjust the entry requirements to allow more flexibility for this show. Rather than try to assume what is desired among the membership, I thought I'd ask. **If you would like adjustments in the entry requirements (such as size, floating framing, mat color, etc.) please send an email to swaexhibitions@gmail.com with any suggested changes to the format that would encourage you to enter this members-only show.** I'm not promising we can do everything that is asked, but you never know...



2019 Best of Show - Alicia & the Botticelli by Bill Dale



"Dance of the Waters" by Deanna Thibault

We've talked about it for years and now you have the opportunity to have some summer fun with an exciting fresh ideas workshop. Since we don't have meetings during the summer this is the perfect solution to keep your brush wet, see those SWA friends and try some new ideas!

Who: Deanna Thibault lives in Granbury and states "My work ranges from impressionism to abstraction. It is always full of design, color and pattern. Many of my paintings begin with a black line using a technique called 'Blind Contour Drawing.'...This technique often creates whimsical shapes. Working very spontaneously, to these shapes I add fresh, bold color, pattern and texture using watercolor and acrylic paints, and then apply hand-painted collage papers for additional pattern and color. As a result of this process, many people describe my work as having great black and white graphics with color and design that sizzles!"

When: Tuesday, 7 July-Thursday, 9 July

9:30 am-4 pm with a one-hour lunch break

Where: St John's Episcopal Church, 2401 College Ave, Fort Worth, TX 76110

Cost: \$200 for SWA members/\$225 for non-members (membership just began for 2020, so renew and claim your discount!) The supply list will soon be posted on the SWA website. A non-refundable deposit (applied to the cost of the workshop) will hold your place!

Who can come and how do I sign up? Bring a friend! Space is limited to 20 participants. Register now on our webpage www.swawatercolor.com and make an easy payment using pay pal.



Hospitality Chair Position

Our Hospitality Chair position is still open. If you would like to offer your services for this position for 2020, please let Darla Bostick know (darlabostickart@gmail.com).

The Hospitality Chair is also responsible for coordinating our refreshments at 2 exhibitions: Our International at the downtown public library and the the Membership in the fall. If you are looking for a way to contribute some help to SWA this year, here is one position that is really appreciated! Perhaps you have a friend who could tag team with you if you may be absent a meeting or two.

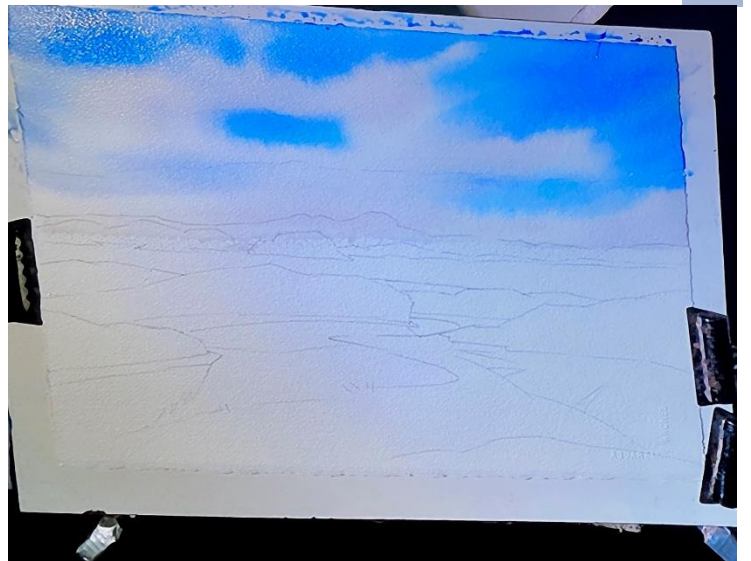


February Demo Artist Walt Davis

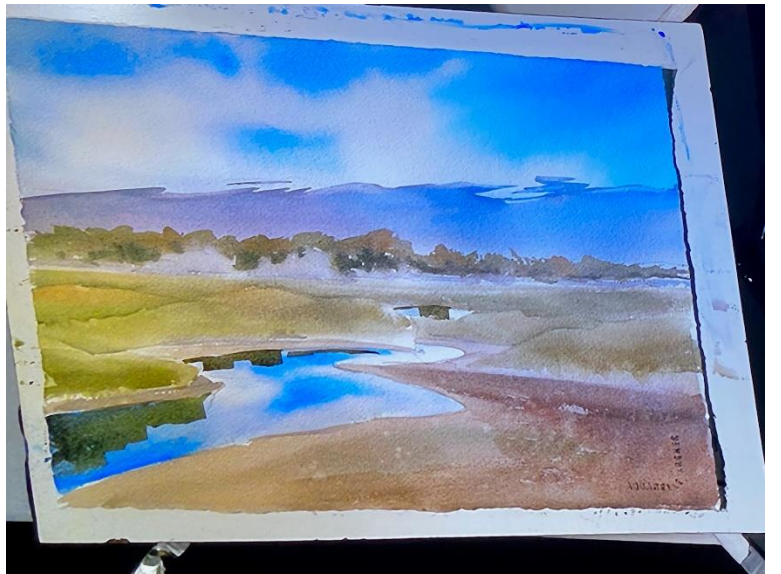
Walt began his landscape demo by painting the largest shapes, the sky and the river. After wetting the background area with a flat brush, he painted the sky with ultramarine blue. He mixed a neutral purple of Raw Sienna, Alizarin Crimson and Cobalt Blue to float in at the bottom of the sky for mountains. Next he applied clear water to the river area and dropped in the mixed neutral purple and ultramarine blue. He moved on to the marsh and muddy areas, using a low intensity, grayed down, warm green that he created by mixing sap green with his purple mixture, raw sienna and new gamboge. He commented that he was breaking the rule of painting distant land next to the sky a cooler color due to the sky's reflection. He painted the foreground area in broad strokes, adding darker pigment in areas and spraying with water for textural effects. He continued strengthening the color in specific areas, painting wet on dry and softening some edges while leaving others hard. Other notes and tips from Walt:



Reference photo, marked with grid lines



- The standard rule is to go four steps darker in value when a brightly lit object has a shaded side.
- Walt uses test strips often to check his colors before applying to his painting.
- He likes to add water to a puddle until it's the size he knows he'll need to paint a wash, and then add the pigment, thus ensuring he mixes enough for the wash.
- For more painting rules, refer to Carleson's Guide to Landscape Painting.
- He recommends creating a value study sketchbook, using gray markers for the sketches.
- During the demo he used the "painting behind" technique to make objects recede or come forward, similar to negative painting.
- He also used the two-brush technique, with one brush loaded with paint and another with clear water to soften edges.
- A couple of "Walt-isms":
 - "Nothing improves a painting like six feet or six weeks."



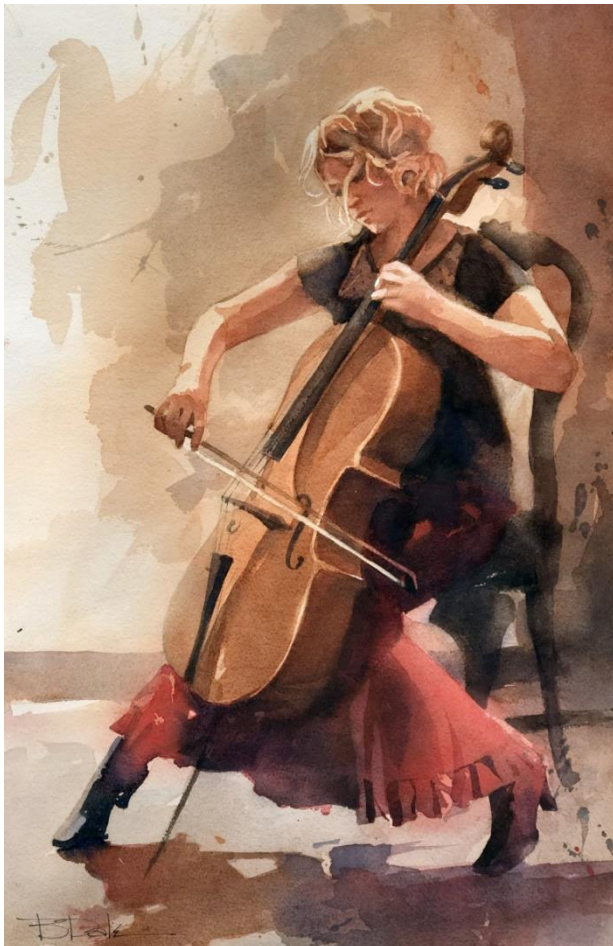
A page from Walt's Value Study Sketchbook

- Regarding a painting's progress, if you get stuck: "If you don't know what to do, do something you have done before." It will probably work, and get you unstuck.

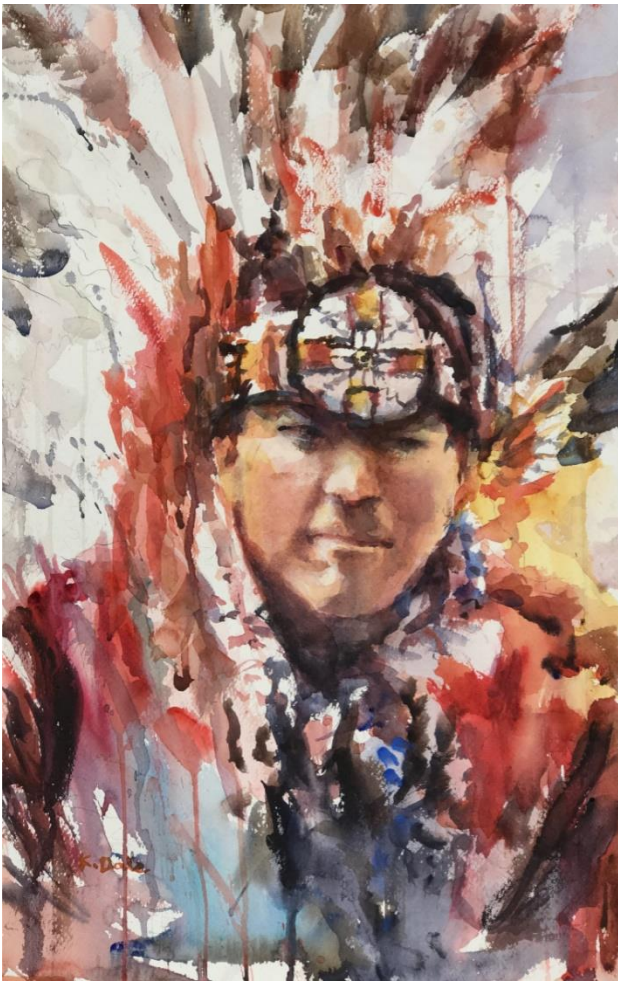
At the end of Walt's demo, he showed the group a beautiful finished painting of the same subject as the demo that he had previously created using the techniques he demonstrated.



Member News



Bill Dale's painting "Cellist" was juried into the 45th Western Federation of Watercolor Societies Exhibition to be held this year in Boise Idaho.



Krystyna Dale's painting "Spirit Dance" was juried into the 45th Western Federation of Watercolor Societies Exhibition to be held this year in Boise Idaho.



From **Shirley Nichols:** Color Concepts is a series of 6 skill-building classes which will begin April 13-June 15, 2020 at the Hobby Lobby In Arlington. There is a morning or afternoon class. Registration required. Contact me at senichols@flash.net or 817-247-9091.

John James and **Soon Warren** were accepted in the Louisiana 50th Annual International Juried Exhibition.



Darla Bostick has a solo show, "The World As I See It" at the Blue House Too in Allen. It encompasses photos and paintings inspired by extensive world travel and will include 50 pieces. Two of her paintings are showing in the Visual Arts of Lewisville "Inspired By..." Exhibition. "Vincent's Pears" is inspired by Vincent van Gogh and "Ghost Ranch Skull" is a nod to Georgia O'Keeffe.

"The World The Way I See It" Paintings and Photographs by Darla Bostick

18 March-18 April

The solo show shares images from Ireland, Tanzania, Botswana, China, Cambodia, Thailand, Wales, Spain, Portugal and more.

Paintings are inspired by travels to Myanmar, Italy, St Lucia, Kenya, Mexico, Egypt and more.

This is the most comprehensive body of Darla's work in a single exhibition, with some pieces receiving international attention.

Blue House Too, Allen Arts Alliance
988 Village Green Drive, Allen Texas~~new location

Gallery Hours: Wed-Friday 4-8pm, Saturdays 1-9pm and Sundays 1-6pm

Reception: Saturday, 21 March, 6-8pm Come meet the artist!

Suzy Pal is teaching sketching/drawing with ink, watercolor and gouache in Cloudcroft NM June 8-11 and also taking a group to Tuscany Sept 5-15. Contact her for more information at suzy_pal2000@yahoo.com.

Ann Winchester teaches watercolor classes for all skill levels on Wednesdays and Saturdays at 11:00 a.m. and 1:30 p.m. at the Hobby Lobby in Arlington, 4628 S Cooper Street. The classes are ongoing and the cost is \$20 per class. For more information or to sign up, call or text Ann at 817-308-1889. She also teaches a Friday class in Cleburne.

2020 Calendar

The SWA Board Meeting is each month at 5:45pm the evening of the monthly meeting.

The Fort Worth Central Library (downtown) is reserved for our next two international juried exhibitions. This year the install is 18 April with a reception and take down May 31.

JANUARY

27 Jan: Gaylord O'Con demo at meeting

FEBRUARY

17 Feb: Walt Davis demo at meeting

MARCH

8 March Deadline for entry SWA International

16 March: Meeting Cancelled

18 March: Notification SWA International

APRIL

9 April: Shipped work due for SWA International

18 April, Saturday: hand deliver works to Atrium Gallery, Fort Worth Library 1-3pm (exact time not yet approved by library)

20 April: Brenda Swenson judges International Exhibition

20 April: Brenda Swenson demo at meeting

21-24 April: Brenda Swenson workshop

MAY

18 May: Shirley Nichols demo at meeting

31 May, Sunday: reception and strike International Juried. Times to be announced.

SUMMER BREAK June, July, August

JUNE

14 June, 11am-1pm drop off works for Presidential Invitational Exhibition, Elm Street Gallery/Studio, Keller

17 June-11 July dates for Presidential Invitational Exhibition, Keller

JULY

6 July set up at St John's Church

7-9 July, 9:30am-4pm daily

11 July, Saturday, 2-4 Reception and Closing, President's Invitational Exhibition, Elm Street Gallery/Studio, Keller

AUGUST

17 August: Nel Dorn Byrd demo at meeting

SEPTEMBER

21 September: Bill Dale & Ann Winchester demo at meeting

No firm date: entry to Juried Membership Exhibition

OCTOBER

No firm date: Oct/Nov is Membership Exhibition at UNTHSC Atrium Gallery

Contact: Shea Patterson Shea.PattersonYoung@unthsc.edu

19 October: Janet Rogers judges Membership Exhibition

19 October: Janet Rogers demo meeting

20-22 October: Janet Rogers workshop

NOVEMBER

16 November: Darla Bostick demo at meeting

16 November: ASEL Artist of the Year voted

DECEMBER

SWA membership runs on a calendar year January through December

You can join SWA anytime during the year. Our official membership campaign is in October as our regular year runs with the calendar: January through December. Those who join mid-year do not receive a discounted membership fee, but they are eligible for the membership juried show in the fall, which is for the 2020 members only. We will not be meeting during the summer months and will resume again in September.

We like new members...invite your friends! The first visit is free.

Membership includes these benefits:

- ✚ Fellowship with like-minded creative folks
- ✚ Post your art work on our Facebook page
- ✚ Free monthly SWA newsletter
[Http://www.facebook.com/SWAwatercolor](http://www.facebook.com/SWAwatercolor)
- ✚ Entry discount for any SWA show
- ✚ Free image on the SWA Members Gallery
- ✚ Annual Juried Membership Exhibition
- ✚ Buy space on the SWA Premium Gallery for \$20
- ✚ Annual Juried International Exhibition
- ✚ While maintaining SWA membership earn SWA Signature Membership after selection to 5 juried exhibitions our juried exhibitions (without disqualification)
- ✚ Asel Art Supply 20% discount
- ✚ Fun competitions
- ✚ December Holiday Party and painting swap
- ✚ ASEL Art of the Month Contest

Our Monthly meetings are held at the UNTHSC, Everett Building. After you turn from Camp Bowie to Clinton St turn left into a sloping parking lot beyond the vacant kiosk. We are on the bottom floor of the building to the right corner. Watch for a sign on the parking lot with directions to our room (or check the map on the website)

5:45pm Board Meeting
6:00pm Critique (bring in 1 or 2 works for some friendly advice)
7:00pm Brief business notices

Ongoing SWA Fundraisers (They help you to help us!)



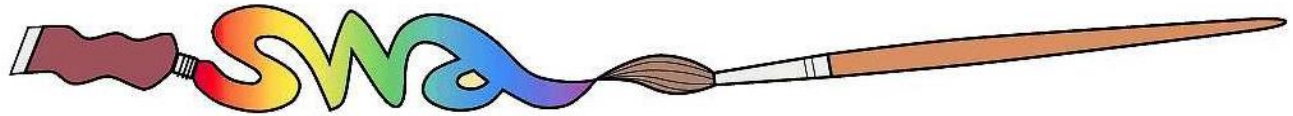
Kroger makes quarterly donations to SWA through your shopping! Go to www.krogercommunityrewards.com. If you already have a Kroger's Plus card, create your account and input your card number. In 7 to 10 days after shopping you will notice at the bottom of your receipt a donation was recorded for SWA.



Colors of Nature offers SWA members a 20% discount on their watercolors and customized brushes that are 100% vegan and cruelty-free. The savings are matched and donated back to SWA. The company will post member's art work created with their paints on their website, blog and direct people to a site of the artist's choice. SWA discount code: Members-20-SWA <http://shop.colorsofnature.com>.



Amazon Smile donates .05% of your online purchase back to SWA. Choose Society of Watercolor Artists as your nonprofit organization.



2020 SWA Officers and Standing Committee Members

2020 Board of Directors

President: *Darla Bostick*
President Elect: **OPEN**
Secretary: *Heidi Russell*

Exhibits: *Charlie Nieman*
Education/Workshop: *Bill Dale*
Treasurer: *Pat Banell*

Membership: **OPEN**
Communications: *Skeeter Murley*
Past President: *Janet Southern*

2020 Standing Committees

EDUCATION COMMITTEE

CHAIR: Bill Dale
ASEL Painting of the Month/Year: Sondra Carr/Mary House
Monthly Critique: Bob Cook
Programs: Shirley Nichols
Social Chairman (Refreshments/Receptions): **OPEN**
Workshop Chair: Bill Dale

PUBLICITY & COMMUNICATION COMMITTEE

CHAIR: Skeeter Murley
Newsletter Editor: Elaine Jary
Photography: Veronica Ritchey
Print Editor for Catalogs: Skeeter Murley
Publicity: **OPEN**
Website Manager: Skeeter Murley
Facebook & Twitter: Skeeter Murley
Demo/Asel Art Winner Photographer: Veronica Ritchey

EXHIBITION COMMITTEE

CHAIR: Charley Nieman
Hanging Volunteers: Mary Bell, Alan McGrew (open to more)
Membership for Exhibitions: Rhonda Barefield
Monetary Entries for Exhibitions: Treasurer
SWA Signatures: Veronica Ritchey
Website Entries & Submissions: Skeeter Murley
Prize Sponsors: Court Bailey
President's Volunteer Exhibition: Darla Bostick, Shirley Nichols (assistant)

FINANCE AND MARKETING COMMITTEE

CHAIR: Pat Banell
Director of Finance & Budget: Pat Banell
Professional Standards (yearly audit): Jane Barrett

MEMBERSHIP COMMITTEE

CHAIR: Janet Southern (Interim)
Director of Membership: **OPEN**
Greeters: **OPEN**
Editor of online Membership Directory: **OPEN**

MEETING VOLUNTEERS (Not a committee)

House & Properties: Shirley Nichols
Hospitality: **OPEN**
Painting of the Month: Sondra Carr/Mary House
Programs/Assistant to Demo Artist: Shirley Nichols