

# SWA

## Society of Watercolor Artists

*Fort Worth, Texas*

Letter from the President

January 2019

Happy New Year! I can't believe another year has passed, so quickly. I've just finished taking down all my Christmas decorations only to find that it is time for me to get busy preparing a painting for the **International Show** that is coming soon. **The prospectus is online and the deadline for sending in entry images is March 10<sup>th</sup>. So, let's all get busy! Find the prospectus [here](#).**



The juror for the show is Iain Stewart. The workshop he is teaching filled up in less than 1 hour after the registration opened for members, which was so amazing. If you did not get signed up in time but are still interested, contact Bill Dale and get your name put on a waiting list. We occasionally have people who have signed up find out at the last minute that they are unable to attend. In those cases, we can move someone on the wait list into their spot. I am really looking forward to this workshop and hope to learn some new things.

If you didn't make it to the Christmas party last December, you missed out on a great time. We had 25 people in attendance with 18 participating in the gift exchange. El Fenix gave us a room all by ourselves so we had plenty of room to spread out and make lots of noise. Let's hope next year we can have even more attend. It's really a lot of fun and camaraderie.

As you undoubtedly noticed, I am still writing the president's letter. I was really hoping that I would be passing the torch to someone new. But, that was not to be. So, I am still open to stepping down if any of you would like to take the position. Otherwise, I will do my best to keep things rolling along for one more year. I am thankful that many of the board stayed on while others moved to different positions. And, we gained Rhonda Barefield and Darla Bostick as board members. We need some volunteers for other jobs, so if someone comes and taps you on the shoulder, please consider serving SWA.

Happy Painting!

Janet

It's time to renew SWA Memberships  
for 2019 – Renew **here!**

## Painting of the Month

SWA members are invited to bring a completed piece to our monthly meeting. The artwork is shown anonymously with each member in attendance voting for their favorite. After winning 1st place, an artist retires from the competition for the remainder of the calendar year. Those who win 2nd place may continue to compete with other pieces of work. Art work previously shown in a SWA juried exhibit is not allowed. The first place wins a \$25 Asel gift certificate and 2nd place wins a \$15 gift card. Many thanks to Mary T House who chairs this fun event for us each month! Be sure and thank Asel Art Supply when you shop at 825 Foch Street.



Reminder: Our January  
meeting will be January 28  
due to the MLK holiday. See  
you then!

## 2018 Painting of the Year – Congrats, Krystyna!



Krystyna Dale,  
"Genevieve"

## 2019 Demo Artists

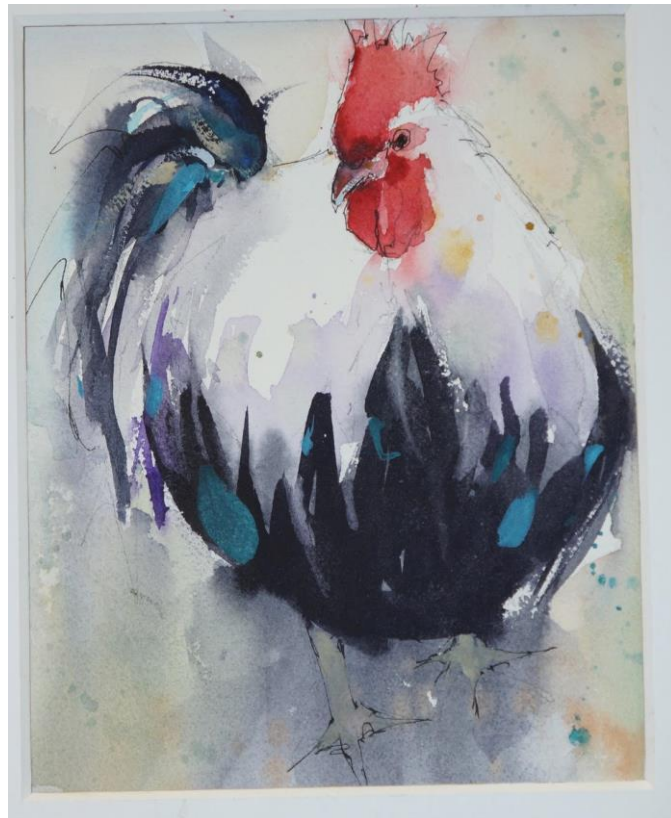
January 28	Bill Dale
February 18	Barry Selman
March 18	Randy Meador
April 22	Iain Stewart
May 20	Jo Williams
Sept 16	David Tripp
October 21	Judi Betts
Nov 18	Ann Winchester
December	Christmas Party



Bill Dale,  
"Pretty Girl"



## November Demo – Beverly Boren



## 2018 Christmas Party – A good time was had by all!















## January Demo – Bill Dale



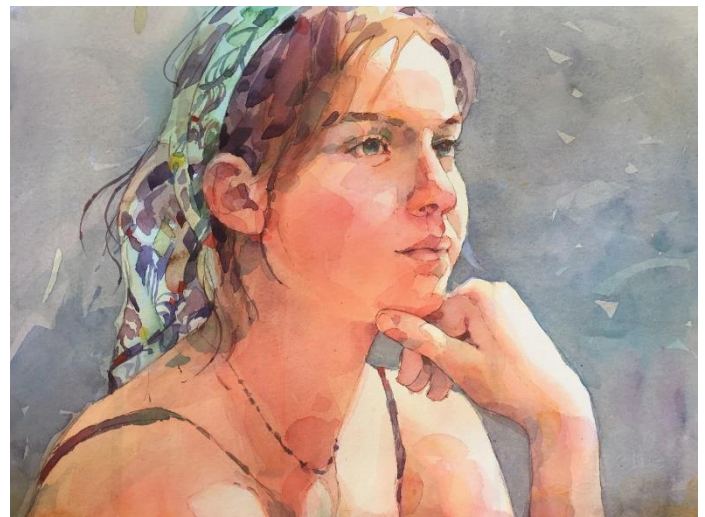
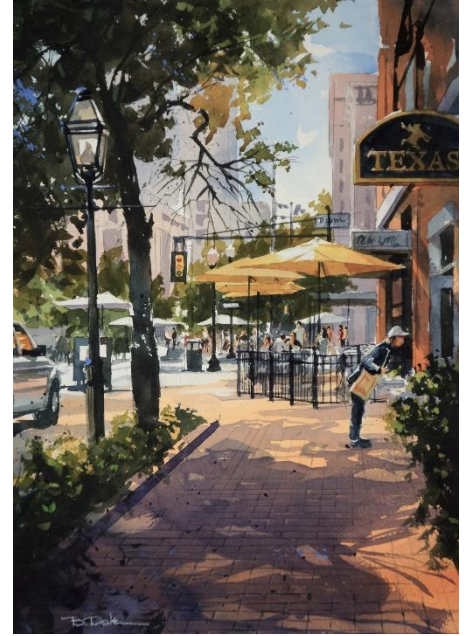
“Deanna”,  
Best of Show,  
WFWS43

### **In Bill’s words:**

I began my art training as a kid with my mother who was a fashion illustrator in Kansas City in the 1950’s and 1960’s. From her I received valuable support, training and

criticism. I graduated from the University of Kansas with a degree in Industrial Design in 1969. I began my professional career working in a design office in Wichita Kansas. There I learned the commercial side of art and honed my technical drawing and rendering skills. After 20 years, I opened my own design office in Texas. My primary profession is 'Product Design', specializing in exterior and interior styling, color, graphics, and illustration of aircraft and other transportation products.

For the last year or so, I have been trying to paint full time. I began with oils but since my wife Krystyna was doing watercolor, I gave that a try. I find the medium much more to my liking. It seems to me that with oil painting every stroke must be consciously placed using the correct color value etc. The best description of my oils is "dull". Watercolor, on the other hand, is much more spontaneous and alive. It does a lot of the work for you. The paint has a mind of its own as it moves, granulates and diffuses before drying. Very difficult to get the results you want but when it happens it's amazing.



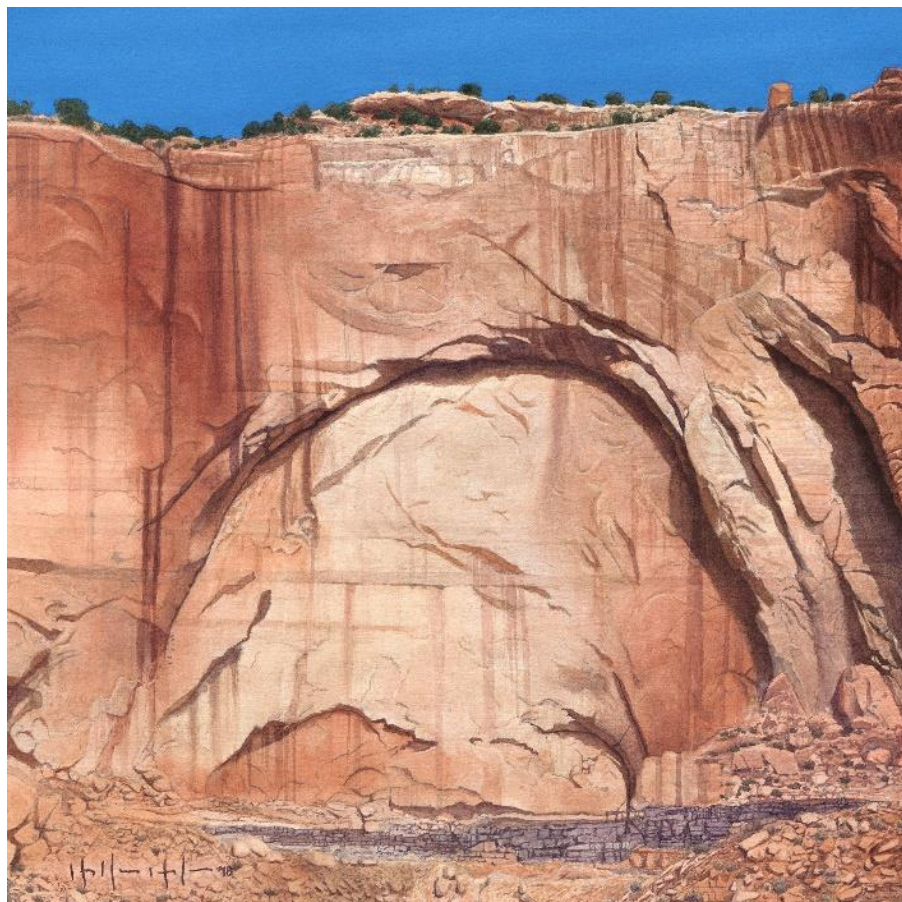
Reflecting on my inspirations and influences; I credit the artists that we all admire: Sargent, Sorolla, Zorn, Homer, etc. A list of today's artists must include: M.Stabin, C.Read, J.Zbukvic, A.Westerman, K.English and all of the talented Chinese watercolorists that I can't name but love their work. I also credit my "watercolor coach" Ann Winchester who has been so generous with her painting knowledge.



## Member News



Robbie Fitzpatrick's watercolors "Please" and "On Grandma's Blanket" were juried into the Women Artists of the West Tallgrass Rendezvous 48th National Exhibition, in Bartlesville, Oklahoma. Her watercolor "Foot of the Bed" has been awarded Honorable Mention in Southwest Art Magazine's Artistic Excellence Competition.



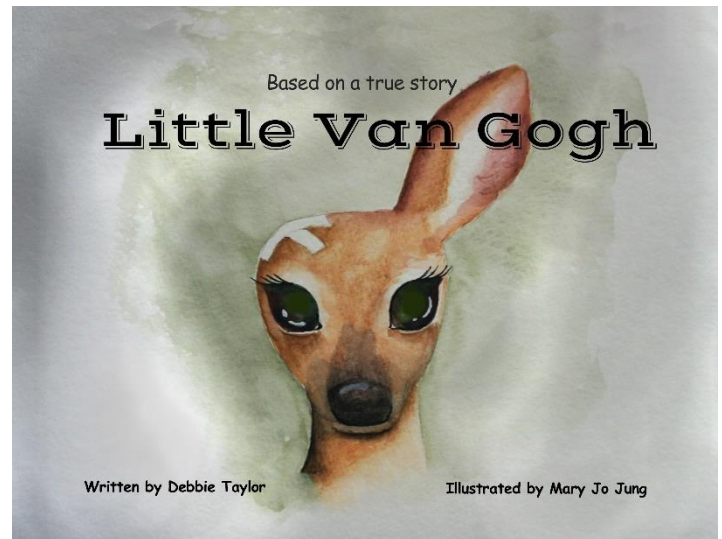
Hollan Holmes took First Place in Watercolor at the 2018 Abilene Center For Contemporary Arts National Juried Competition, with his painting, "Northeast Of Torrey".



Gwen Davis Revino's painting, "Pelicans In The Sun", was accepted into WFWS 2019.

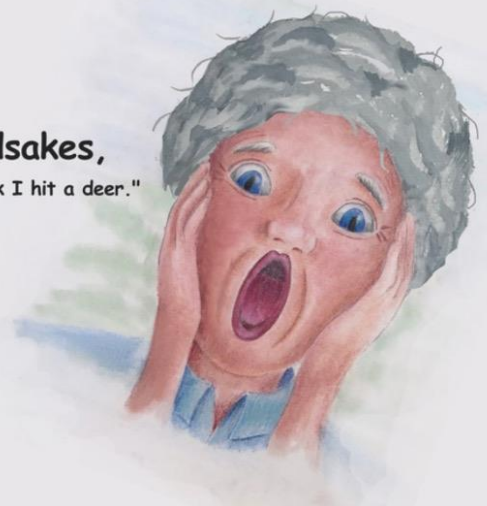


Mary Jo Jung illustrated a children's book that is now in print. It is based on a true story and written by Debbie Taylor of Granbury. It is painted in watercolor, some colored pencil and then digitally detailed. You can read more about it at [www.littlevannie.com](http://www.littlevannie.com).




One day, while Grandma Jo was mowing with her tractor, she felt a THUMP.


"Landsakes,  
I think I hit a deer."








**CC YOUNG**  
THE POINT & PAVILION



**Elaine Jary**  
*Windows To Nature*

**JANUARY ART GALLERY SHOW**  
Friday, Jan. 4 - Tuesday, Jan. 29

**Meet The Artist Reception**  
Thurs. Jan. 17  
3:30pm  
at The Point



Check [www.ccyoung.org](http://www.ccyoung.org)  
for more info on each month's art gallery  
and reception!

*All shows are free and open to the public.*  
Gallery Open Daily 6am-8pm  
4847 W. Lawther Dr.  
Dallas, TX 75214  
[www.ccyoung.org](http://www.ccyoung.org)  
214-841-2831

Elaine Jary has a solo show at CC Young's The Point in Dallas, through January 29. Over 50 paintings are displayed.

*You are invited!*

**For the Love of Art  
Show and Sale  
Sunday  
February 17, 2019 1 - 5 p.m.**

Star Harbor City Hall  
99 Sunset Blvd. Star Harbor, TX

Presented by  
**The Star Harbor Watercolor Society**

*Directions:* Turn onto FM3062 just north of Malakoff at the Fire Station on TX Hwy 198; continue past the high school 1.4 miles into Star Harbor, veer left at Y, building on right at golf course.

**Free event—original artwork, live music, live painting demonstrations, delicious refreshments**

## **News from Botanical Research Institute of Texas (BRIT)**

The annual exhibit of the Botanical Art Collective of North Central Texas will take place at the Botanical Research Institute of Texas from May 10th - June 20th. Guidelines for submissions and deadlines will be in the next newsletter or available from Denis Benjamin at [dbenjamin@brit.org](mailto:dbenjamin@brit.org)

There will be a second exhibit in the atrium/welcome center of BRIT from June 24th to August 23rd. This includes fall Gallery Night, which last year attracted hundreds of gallery patrons. This exhibit will feature 'small works' of botanical art - no larger than 14 inches framed.

### ***SWA membership runs on a calendar year January through December***

You can join SWA anytime during the year. Our official membership campaign is in October as our regular year runs with the calendar: January through December. Those who join mid-year do not receive a discounted membership fee, but they are eligible for the membership juried show in December which is for the 2018 members only. We will not be meeting during the summer months and will resume again in September.

### ***We like new members...invite your friends! The first visit is free.***

Membership includes these benefits:

- ✚ Fellowship with like-minded creative folks
- ✚ Post your art work on our Facebook page
- ✚ Free monthly SWA newsletter  
<http://www.facebook.com/SWAwatercolor>
- ✚ Entry discount for any SWA show
- ✚ Free image on the SWA Members Gallery
- ✚ Annual Juried Membership Exhibition
- ✚ Buy space on the SWA Premium Gallery for \$20
- ✚ Annual Juried International Exhibition
- ✚ While maintaining SWA membership earn SWA Signature Membership after selection to 5 juried exhibitions our juried exhibitions (without disqualification)
- ✚ Asel Art Supply 20% discount
- ✚ Fun competitions
- ✚ December Holiday Party and painting swap
- ✚ ASEL Art of the Month Contest



Our Monthly meetings are held at the UNTHSC, Everett Building. After you turn from Camp Bowie to Clinton St turn left into a sloping parking lot beyond the vacant kiosk. We are on the bottom floor of the building to the right corner. Watch for a banner on the parking lot with directions to our room (or check the map on the website)

5:45pm Board Meeting

6:00pm Critique (bring in 1 or 2 works for some friendly advice)

7:00pm Brief business notices

## Ongoing SWA Fundraisers (They help you to help us!)



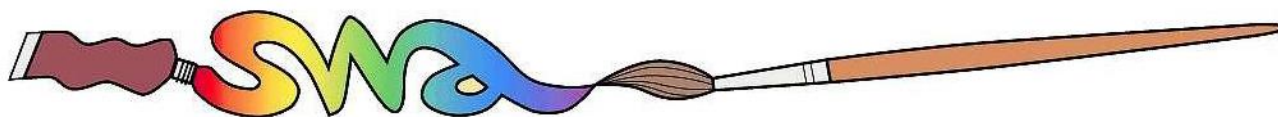
Kroger makes quarterly donations to SWA through your shopping! Go to [www.krogercommunityrewards.com](http://www.krogercommunityrewards.com). If you already have a Kroger's Plus card, create your account and input your card number. In 7 to 10 days after shopping you will notice at the bottom of your receipt a donation was recorded for SWA.



Colors of Nature offers SWA members a 20% discount on their watercolors and customized brushes that are 100% vegan and cruelty-free. The savings are matched and donated back to SWA. The company will post member's art work created with their paints on their website, blog and direct people to a site of the artist's choice. SWA discount code: Members-20-SWA <http://shop.colorsofnature.com>.



Amazon Smile donates .05% of your online purchase back to SWA. Choose Society of Watercolor Artists as your nonprofit organization.



## 2019 SWA Officers and Standing Committee Members

### 2019 Board of Directors

**President:** Janet Southern  
**Secretary:** Darla Bostick  
**Treasurer:** Pat Banell

**Exhibits:** Skeeter Murley  
**Education/Workshop:** Bill Dale

**Membership:** Rhonda Barefield  
**Communications:** Skeeter Murley  
**Past President:** John Nickell

## 2019 Standing Committees

### EDUCATION COMMITTEE

**CHAIR:** Bill Dale

**Members are:**

ASEL Painting of the Month/Year: Mary T House

Monthly Critique: Bob Cook

Programs: **OPEN**

Social Chairman (Refreshments/Receptions): Dawn

Kerbs/Veronica Ritchey

Workshop Chair: Bill Dale

### PUBLICITY & COMMUNICATION COMMITTEE

**CHAIR:** Skeeter Murley

**Members are:**

Newsletter Editor: Elaine Jary

Photography: Veronica Ritchey

Print Editor for Catalogs: Skeeter Murley

Publicity: **OPEN**

Website Manager: Skeeter Murley

Website Consultant: Sharon Giles

Facebook & Twitter: Skeeter Murley

**EXHIBITION COMMITTEE**

CHAIR: Skeeter Murley

*Members are:*

Hanging Volunteers: Skeeter Murley, Bill Dale, Janet Southern

Membership for Exhibitions: Rhonda Barefield

Monetary Entries for Exhibitions: Treasurer

SWA Signatures: Veronica Ritchey

Website Entries & Submissions: Skeeter Murley

Prize Sponsors: Court Bailey

**MEETING VOLUNTEERS** (Not a committee)

House & Properties: **OPEN**

Hospitality: Dawn Kerbs/Veronica Ritchey

Painting of the Month: Mary T House

Programs/Assistant to Demo Artist: **OPEN**

**FINANCE AND MARKETING COMMITTEE**

CHAIR: Pat Banell

*Members are:*

Director of Finance & Budget: Pat Banell

Fantastic Fans: Shirley Nichols

Professional Standards (yearly audit): Brenda Morgan

**MEMBERSHIP COMMITTEE**

CHAIR: Rhonda Barefield

*Members are:*

Director of Membership: Rhonda Barefield

Greeters: Shirley Nichols, Linda Taylor, Suzy Ware