



Message from the President

Hi everyone! I can't believe it is already May and this month will be the last meeting before we break for the summer months. Make sure you set your calendar for May 15th for one more night of fellowship with other members plus the demo by Sarah Graham Harman. She is well known for her award winning portraits.

Those of you who did not sign up for the workshop with Laurie Goldstein Warren missed a fun and informative time. We learned her technique of using posterization to identify the planes of a face. Even though we all painted the same model, everyone's painting was different. It was really a lot of fun.

We have planned a workshop with our own member, Michael Holter, for the fall. So, if you missed Laurie's workshop, try to attend Michael's. I do so enjoy learning other artists' techniques and always come away from a workshop having discovered something new.

Last month we didn't have any paintings hanging on the Line Art wall. I admit I didn't bring anything but it wasn't for lack of trying. I had two paintings selected but managed to get out of the house without them. Go through your stash of paintings/sketches and see if you can bring something this month. It is a fun way for each of us to get to know our fellow members.

This is the final month that the international show will be hanging at the library. We would love to see everyone at the reception May 27th. This show is fantastic!

See you at the meeting . . .

Janet Southern

ASEL ART AWARDS Artist of the Month Competition!

SWA members are invited to bring a completed piece to our monthly meeting. The artwork is shown anonymously with each member in attendance voting for their favorite. After winning 1st place, an artist retires from the competition for the remainder of the calendar year. Those who win 2nd place may continue to compete with other pieces of work. Art work previously shown in a SWA juried exhibit is not allowed. The first place winner goes home with a \$25 Asel gift certificate and 2nd place earns one for \$15. In November all first place pieces during 2017 will return for selection of "Artist of the Year." Many thanks to Mary T House who chairs this fun event for us each month! Be sure and thank Asel Art Supply when you shop at 825 Foch Street.



April Paintings of the Month

1st Place goes to **Bill Dale** for his painting
"Tourist"

2nd Place goes to **Vickie Pflueger** for her
painting "Newspaper Curtains"

Congratulations to our winners!

Bring your work to the next SWA
meeting on May 22!



May Demo Artist: Sarah Graham Harman

Sarah currently lives and paints in Dallas and is known for her sensitive touch with watercolors, especially her portraits. She received her Bachelor's Degree in Fine Arts from Houghton College and also studied art and portraiture in Italy. In addition to receiving national and regional recognition for her work in competitive art shows such as Texas and Neighbors Regional Exhibition and Society of Watercolor Artist's International Exhibition, Sarah has travelled extensively, translating what she sees into wet color or pen-and-ink sketches. Sarah is frequently sought out as a demo-artist and juror for art associations and exhibitions in the DFW area. She loves to take the train into the city and watch people or go "exploring" with her sketchbook.



We posed a couple of questions to Sarah about her artistic philosophy:

As an artist, what inspires you in your every day life?

I try to make it my challenge to see the extra-ordinary in the ordinary, especially now as a mother, doing very ordinary things most of the time. I believe even people, places and circumstances not at first considered desirable can be made beautiful if one chooses to see the beauty in them. That is my mantra in life and in painting.

As an artist, what's the best advice you ever received?

I had a professor in college who used to say "Don't be a coward," meaning, "Don't sacrifice the opportunity for a great painting because you're afraid to ruin a good one. Be brave enough to make mistakes so you can learn from them." I say that to myself with almost every painting, and I certainly owe my best paintings to that advice.

Demo Artists for 2017

May 22nd:
June - August
September 18th

Sarah Graham Harmon
No meetings
David Tripp



October 16th
November 20th
December

Cheryl Meggs
Sharon Giles
Holiday party TBA

Member News

Jane Stoddard was juried into the following shows: TWSA, Louisiana International, Northwest National Show, Alabama 76th National Show (won patron award), Adirondack National Exhibition of Watercolor, and the Mid-Atlantic Watercolor Show.

Muriel Mimura had her painting "Lupe with Oaxacan Embroidery" accepted for the Western Federation of Watercolor Societies exhibition and won a Merit Award (hanging April 7 - June 20, 2017 at the Jordan Schnitzer Museum of Art in Eugene, OR; juror Jeanie McGuire). Her painting "Reflection – Vietnam" (pictured) was accepted for the Southern Watercolor Society's exhibition (hanging April 29 - June 16, 2017 at the Panama City Center for the Arts in Panama City, FL; juror Linda Kemp). Her painting "Elephant 5" was accepted for the RCAS Regional exhibition (hanging April 26 - May 30, 2017 at the Eisemann Center in Richardson, TX; juror Hebe Brooks). Her painting "Severo – San Miguel 2" was accepted for the Watercolor USA exhibition (hanging June 3 - August 27, 2017 at the Springfield Art Museum in Springfield, MO; juror Laurin McCracken). Her painting "Watering – Vietnam" was accepted for the Texas Watercolor Society (hanging June 9 – August 26, 2017 at Patterson-Appleton Center for the Visual Arts in Denton, TX; juror Soon Warren). Her painting "Alma with Monarchs" was accepted for the book "Splash 19: Illusion of Light", which will be published in the summer of 2018.



Suzy Powell was accepted into the New Mexico Watercolor Society Show and won an award. "Take a Seat" is pictured, right.



Congratulations to the following members who were juried into the Trinity Art Guild's Open show that runs May 2 through June 6: **Court Bailey, Denis Benjamin, Darla Bostick, Krystyna Dale, Brenda Driggers, Jim Evans, Debbie Ford, Sharon Giles, Hugh Heaton, Norma Lively, Suzanne McNeil-Sparks, Kinji Nishikawa, Pamela Oldham, and Lok Hou Pang.** Shown below is *Tranquility* by **Brenda Driggers**:



Laurie Goldstein Warren Demo: Highlights From the April Meeting

Laurie began her demo by talking about the products she uses. Her choice of materials is efficient and organized, saving time and providing consistency to her style. Regarding paper, she uses Fabriano exclusively. Over time she has evolved to using a limited palette, and she favors Daniel Smith quinacridone colors including rose and gold; Winsor Newton Antwerp Blue and Cobalt Blue; and Lamp Black. For brushes she prefers a Black Velvet paddle brush with a long handle and Asian bamboo brushes. She uses a hake brush for blending but not for painting. When ordering supplies, she buys 100 sheets at a time and 4 or 5 tubes of her paint colors.

Laurie talked about the risk of rejection when applying for juried shows. Her message was to never give up and keep at it. She said she entered the National Watercolor show for 14 years and was finally accepted this year. She keeps track in a book of the outcome of every show she has entered since 2003. One of her favorite sayings is "You have to be a pit bull; you can't be a poodle."



Hake Brush

Here are some points she covered about her technique:

- Paints dark to light.
- Posterizes her photos in a software program in order to simplify shapes for her drawing.
- Starts a painting with the large value shapes.
- Step 1 is to mist over the painting surface and apply Quin Gold randomly, then apply Quin Rose, and finally Cobalt Blue, letting the colors mix while wet.
- Doesn't size or stretch her paper; uses 140 pound.
- With a No. 14 bamboo, spatters around in the background with all 3 colors while still wet for more texture.
- Step 2, after completely dry, is to start with a large value color area and paint each color in the same order as the background except using Antwerp instead of Cobalt. Let the colors mix and mingle together while wet.
- Step 3, after completely dry, is to reinforce the values with the same technique above.
- Step 4 is to mask around the outline of the main subject using her favorite masking fluid, PBO.
- Step 5 is to paint the background again with all 3 colors using thick paint coverage. Use a spray bottle for texture. Use a hake brush to smooth the background colors and blend by lightly touching the brush to paper.



She characterized her painting style as relaxed and carefree, saying "I'm definitely not a pristine painter."

Photos from the Workshop:



*When you paint, try to put
down exactly what you see.
Whatever else you have to
offer will come out anyway.*

Winslow Homer



SWA membership runs on a calendar year January through December

You can join SWA anytime during the year. Our official membership campaign is in October as our regular year runs with the calendar: January through December. Those who join mid-year do not receive a discounted membership fee, but they are eligible for the membership juried show in December which is for the 2016 members only. We will not be meeting during the summer months and will resume again in September.

We like new members...invite your friends! The first visit is free.

Membership includes these benefits:

- ✚ Fellowship with like-minded creative folks
- ✚ Post your art work on our Facebook page
- ✚ Free monthly SWA newsletter
<http://www.facebook.com/SWAwatercolor>
- ✚ Entry discount for any SWA show
- ✚ Free image on the SWA Members Gallery
- ✚ Annual Juried Membership Exhibition
- ✚ Buy space on the SWA Premium Gallery for \$20
- ✚ Annual Juried International Exhibition
- ✚ While maintaining SWA membership earn SWA Signature Membership after selection to 5 juried exhibitions our juried exhibitions (without disqualification)
- ✚ Asel Art Supply 20% discount
- ✚ Fun competitions
- ✚ December Holiday Party and painting swap
- ✚ ASEL Art of the Month Contest

Our Monthly meetings are held at the UNTHSC, Everett Building. After you turn from Camp Bowie to Clinton St turn left into a sloping parking lot beyond the vacant kiosk. We are on the bottom floor of the building to the right corner. Watch for a banner on the parking lot with directions to our room (or check the map on the website)

- 5:45pm Board Meeting
- 6:00pm Critique (bring in 1 or 2 works for some friendly advice)
- 7:00pm Brief business notices

Ongoing SWA Fundraisers (They help you to help us!)



Kroger makes quarterly donations to SWA through your shopping!

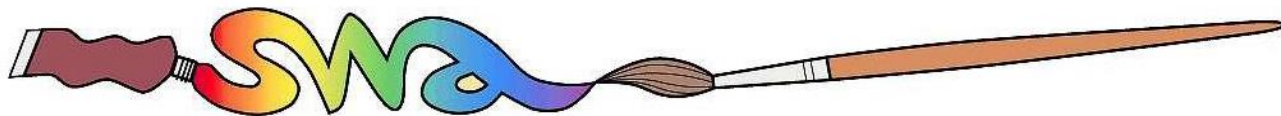
Go to www.krogercommunityrewards.com. If you already have a Kroger's Plus card, create your account and input your card number. In 7 to 10 days after shopping you will notice at the bottom of your receipt a donation was recorded for SWA.



Colors of Nature offers SWA members a 20% discount on their watercolors and customized brushes that are 100% vegan and cruelty-free. The savings given members are matched and donated back to SWA. The company will post member's art work created with their paints on their website, blog and direct people to a site of the artist's choice. SWA discount code: Members-20-SWA
<http://shop.colorsofnature.com>.



Amazon Smile donates .05% of your online purchase back to SWA. Choose Society of Watercolor Artists as your nonprofit organization.



2017 SWA Officers and Standing Committee Members

2017 Board of Directors

President: Janet Southern

Secretary: Dawn Kerbs

Treasurer: Pat Banell

Exhibits: Court Bailey

Education/Workshop: Bill Dale

Membership: Mary Bell

Communications: Skeeter Murley and
Veronica Ritchey

Past President: John Nickell

2017 Standing Committees

EDUCATION COMMITTEE

CHAIR: Bill Dale

Members are:

ASEL Painting of the Month/Year: Mary T House

Monthly Critique: **OPEN**

Programs: Alice Hoener

Social Chairman (Refreshments/Receptions): Rhonda Barefield

Workshop Chair: Bill Dale

PUBLICITY & COMMUNICATION COMMITTEE

Co-CHAIRS: Skeeter Murley and Veronica Ritchey

Members are:

Newsletter Editor: Elaine Jary

Photography: Veronica Ritchey

Print Editor for Catalogs: Skeeter Murley

Publicity: **OPEN**

Website Manager: Skeeter Murley

Website Consultant: Sharon Giles

Facebook & Twitter: Skeeter Murley

EXHIBITION COMMITTEE

CHAIR: Court Bailey

Members are:

Hanging Volunteers: Jim Stewart

Membership for Exhibitions: Mary Bell

Monetary Entries for Exhibitions: Treasurer

SWA Signatures: Debbie Downing

Website Entries & Submissions: **OPEN**

Prize Sponsors: **OPEN**

FINANCE AND MARKETING COMMITTEE

CHAIR: Pat Banell

Members are:

Director of Finance & Budget: Pat Banell

Fantastic Fans: Shirley Nichols

Professional Standards (yearly audit): Brenda Morgan

MEMBERSHIP COMMITTEE

CHAIR: Mary Bell

Members are:

Director of Membership: Mary Bell

Greeters: Shirley Nichols, Linda Taylor, Suzy Ware

MEETING VOLUNTEERS (Not a committee)

House & Properties: **OPEN**

Hospitality: Rhonda Barefield

Painting of the Month: Mary T House

Programs/Assistant to Demo Artist: **OPEN**