

SWA

Society of Watercolor Artists

Fort Worth, Texas

May 2018

Letter from the President

Hi Everyone,

Can you believe it is already May? Even the weather doesn't seem to know what time of year it is. I'm sitting here while it is raining, again, thinking that April showers were supposed to be finished so we can have some May flowers.

Speaking of May flowers, two things need mentioning: First, the deadline for entering the first BRIT juried show is May 28th. Of course, it can be anything botanical, not just flowers. Second, I forgot to mention at April's meeting that the Clothesline Art suggested subject matter for May is "Floral". So, you can audition your BRIT entry on the clothesline, if you want.

Don't forget to attend the reception for the International Show on May 20th from 2:00-4:00. Please bring a dish to share with others for a fun time. Once the reception is over, all the paintings will need to be removed and checked off the entry list. If you can't make the reception, please be sure to make arrangements with someone to pick up your painting.

For those of us who attended the Don Andrews workshop, I hope you had as good a time as I did. I learned quite a few new ways to look at painting and really enjoyed Don's way of teaching. Our next workshop is the last week of September with Ric Dentinger who is from San Antonio. So, if you are interested in taking his workshop, keep watching the website and get your reservation in as fast as you can. We are trying to keep the cost of workshops down so others can take advantage of learning something new.

See you May 20th for the reception and May 21st for our last meeting before the summer break,

Janet



Some of last month's clothesline art

Your shopping matters. This Mother's Day, shop for Mom at smile.amazon.com/ch/75-1885300 and Amazon donates to Society of Watercolor Artists Inc.

ASEL ART AWARDS Artist of the Month Competition

SWA members are invited to bring a completed piece to our monthly meeting. The artwork is shown anonymously with each member in attendance voting for their favorite. After winning 1st place, an artist retires from the competition for the remainder of the calendar year. Those who win 2nd place may continue to compete with other pieces of work. Art work previously shown in a SWA juried exhibit is not allowed. The first place wins a \$25 Asel gift certificate and 2nd place wins a \$15 gift card. In November all first place pieces during 2018 will return for selection of "Artist of the Year." Many thanks to Mary T House who chairs this fun event for us each month! Be sure and thank Asel Art Supply when you shop at 825 Foch Street. Plan to bring your art to our next meeting, **May 21, 2018.**



April Painting of the Month Winners



First Place: Darla Bostick, *Land of the Ancients*



Second Place: Carolyn Seely, *Tuckered Tourists*

2018 Demo Artists

January	Nancy Maas	https://nmaas.com/
February	Darla Bostick	https://www.darlabostick.com/
March	Michael Holter	http://michaelholter.com/
April	Don Andrews	https://www.donandrewsstudio.com/
May	Cecy Turner	http://www.cecytturner.com/
September	Sarah Graham Harman	https://www.facebook.com/SarahGrahamArt/
October	TBD	
November	Bev Boren	http://bevoren.com/
December	Christmas Party	

Important 2018 Dates

May 20	Reception for International Exhibition
Sept 26-28	Ric Dentinger Workshop - Website
October	SWA Membership Juried Exhibition

Don Andrews Demo and Workshop

Don's demo was informative and entertaining, as he gave us tips and told colorful stories while working on a painting of a backlit cowboy. He began by working wet into wet, covering most of the paper in various grays while preserving the white area around the cowboy figure. He talked about the element of counterbalance, or carrying colors throughout the painting to provide harmony. He used a Kleenex to blot off some of the paint and create texture in the wet areas. He used middle values in the areas that were not important, reserving the highest contrast in values for the center of interest. As Don worked, he explained that he often works from photos but also creates



Working out the composition and values with a preliminary sketch

sketches and small studies before starting the actual painting. He stressed that even a good photo needs to be “edited” to be used as a painting. His goal in a preliminary sketch is not to have a “good” drawing, but to refine the composition of the painting. As he said, “Not to plan is to plan to fail.” He also stated that by spending five minutes to do a preliminary sketch, the artist can make a better painting, and that every good painter has that habit. Also, the light source should be decided before a painting is begun. Other tips:

- Don likes to use Ultramarine Blue and Magenta for nice darks.
- The simplest form that one can paint that identifies a shape is a silhouette, which is a good place to start.
- Shadows are used to connect shapes in a painting for “linkage,” to unify the various objects in a painting. Light is also used in this manner.
- Darks were added at the end of the painting for refinement and reinforcement of values.



Don’s workshop was a fun, educational event. Some tips from the workshop:

- Throw Hooker’s Green away! You can mix an unlimited variety of greens with your primary colors, which will ensure color harmony in your paintings.
- “A photo is like an unedited manuscript.” It’s a starting point for a painting and must be edited and improved.
- The foreground is an issue in many paintings. The eye enters a painting from the bottom; in reality we see what is closest to us in the most detail. However, in a painting, the most detail should be in the center of interest.
- Don stressed that using oblique rather than geometric shapes yields a more interesting composition.

- “Qualify the light” – if light areas look too stark when dry, add very subtle color on some of the white areas.
- We are painting an impression of a subject, not the truth of it.

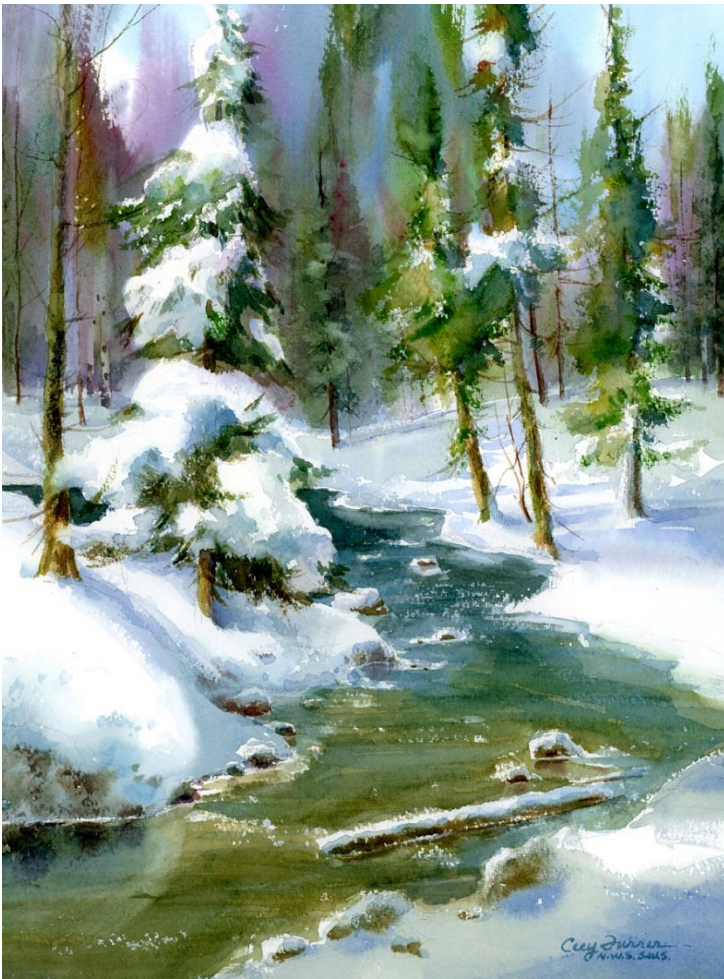


May Demo Artist Cecy Turner

Cecy Turner is an award-winning artist who has been painting and teaching for the past thirty-five years. She takes ordinary subjects and makes them seem magically “bathed in light.” She loves to paint a large variety of subject matter to continue the challenge with each new painting and she constantly works on her development as an artist. Her frequent plein air painting gives her much pleasure because of her lifelong love of the outdoors, as well as sharpening her decision-making and observation skills at the same time. It is her favorite way of painting because of its urgency and freshness.

Cecy’s work has been shown in numerous solo and group shows in the United States and Japan. Her work is found in private and public collections throughout the United States and Europe, such as the Brevard Art Museum, National Audubon Society and Paralyzed Veterans of America, to name just a few.

Cecy’s web site is www.cecylturner.com and her Blog is www.AnAspenaDay.com.

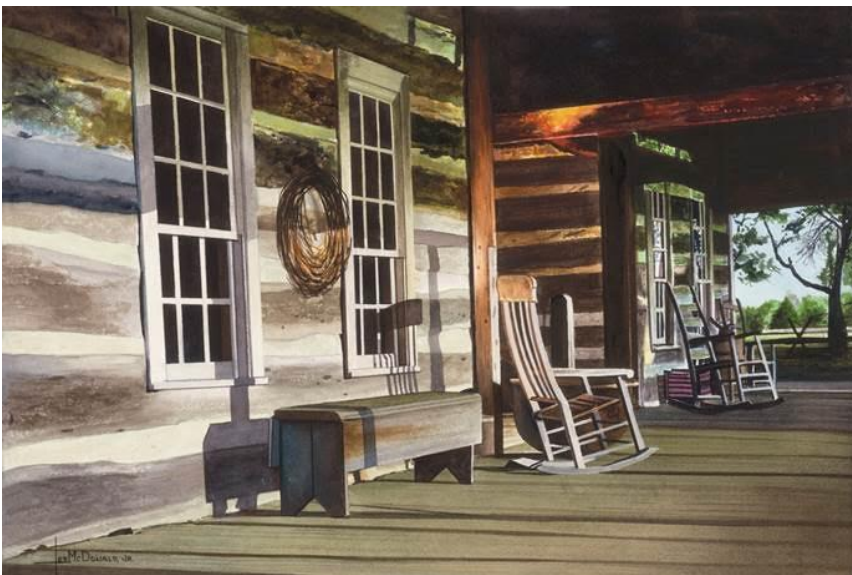


SWA International Juried Exhibition – Reception May 20, 2 pm – 4 pm

Call to members: Please help out by bringing a snack to share at the show. Last names beginning with A through I – please bring a savory/salty dish ready to eat (cheese already cut, etc.). Last names beginning with J through R – please bring a fruit or combo item; again, prepared and ready to eat. Last names S through Z – please bring a dessert. Bite sized finger food items are best for our reception buffet. SWA will be providing a meat tray with crackers. **Thanks to everyone in advance for making our show reception a success!**

Member News

Suzy Powell had two paintings accepted into the New Mexico Watercolor Society Show and has received signature status. In addition, Suzy is teaching a sketching/watercolor workshop, “Seeing the beauty around us” in Tuscany Oct 18-28 – there is one spot open! There are exciting trips for each day. And...you don’t even have to paint if you want to join a fun group in a wonderful adventure. For more information, check out the website: <http://followyoursensesintuscany.com/course/suzy-palpowell/>



Les McDonald's Pioneer Home –
Dog Trot won first place 1st place in
the Watercolor Art Society-
Houston, monthly show for April.

Mike Nichols - 'Watching TV' was selected to receive this year's Lehmann Memorial Award at the 42nd National Exhibition of the Transparent Watercolor Society of America "Illusions" will be included in *Splash 20-Creative Compositions* which will be published in 2019.



Heidi Russell's "Godzilla Road" has been accepted at the 2018 Trinity Art Guild Open Show.



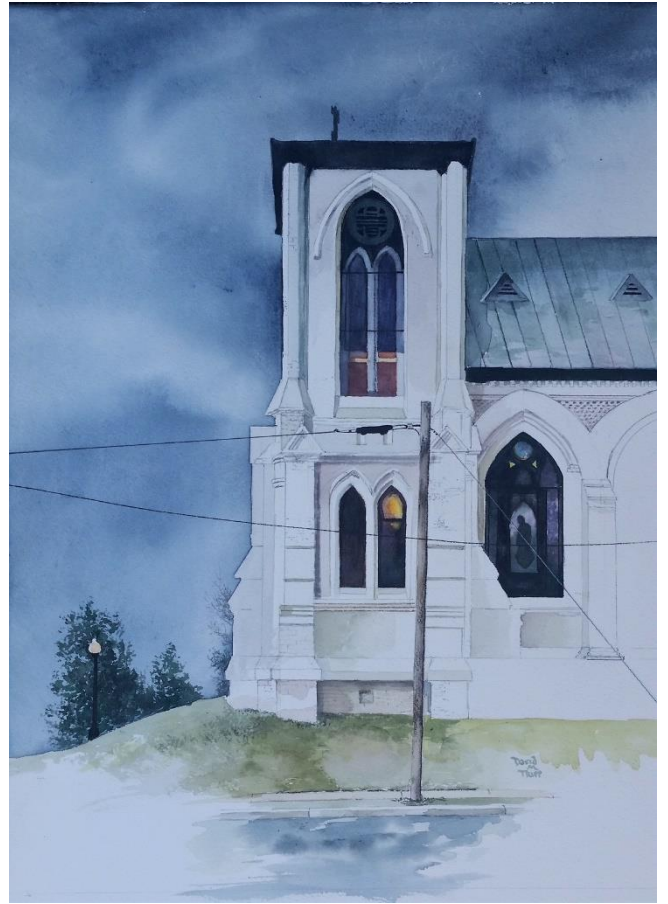
Bill Dale's *Deanna* won Best of Show at the Western Federation of Watercolor Artists Show.



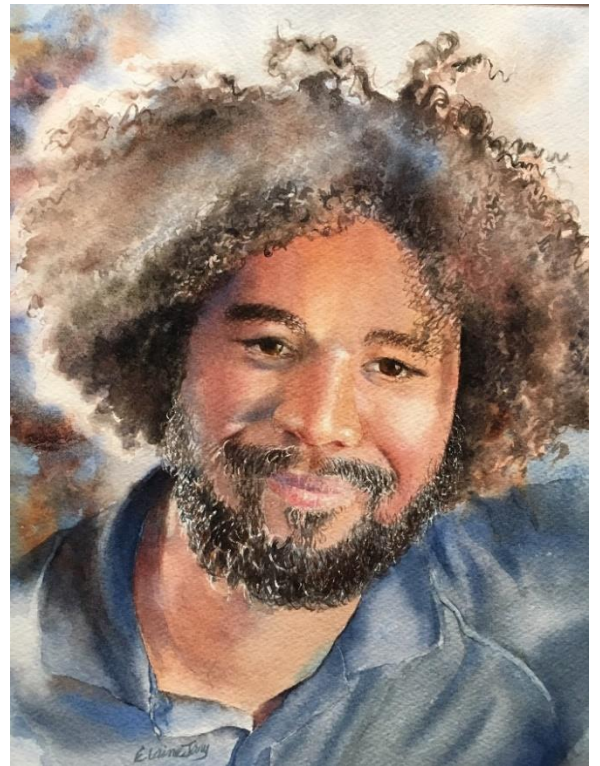
Krystyna Dale's *Sunflower*, accepted into the Western Federation of Watercolor Artists Show, sold at the show.



David Tripp had two paintings accepted into the 2018 Trinity Art Guild Open Show, *610 Schultz* and *Sacred Heart*..



Elaine Jary had two paintings accepted into the 2018 Trinity Art Guild Open Show, *Bird of Paradise* and *Jeremy*..



SWA membership runs on a calendar year January through December

You can join SWA anytime during the year. Our official membership campaign is in October as our regular year runs with the calendar: January through December. Those who join mid-year do not receive a discounted membership fee, but they are eligible for the membership juried show in December which is for the 2018 members only. We will not be meeting during the summer months and will resume again in September.

We like new members...invite your friends! The first visit is free.

Membership includes these benefits:

- ✚ Fellowship with like-minded creative folks
- ✚ Post your art work on our Facebook page
- ✚ Free monthly SWA newsletter
[Http://www.facebook.com/SWAwatercolor](http://www.facebook.com/SWAwatercolor)
- ✚ Entry discount for any SWA show
- ✚ Free image on the SWA Members Gallery
- ✚ Annual Juried Membership Exhibition
- ✚ Buy space on the SWA Premium Gallery for \$20
- ✚ Annual Juried International Exhibition
- ✚ While maintaining SWA membership earn SWA Signature Membership after selection to 5 juried exhibitions our juried exhibitions (without disqualification)
- ✚ Asel Art Supply 20% discount
- ✚ Fun competitions
- ✚ December Holiday Party and painting swap
- ✚ ASEL Art of the Month Contest

Our Monthly meetings are held at the UNTHSC, Everett Building. After you turn from Camp Bowie to Clinton St turn left into a sloping parking lot beyond the vacant kiosk. We are on the bottom floor of the building to the right corner. Watch for a banner on the parking lot with directions to our room (or check the map on the website)

5:45pm Board Meeting
6:00pm Critique (bring in 1 or 2 works for some friendly advice)
7:00pm Brief business notices

Ongoing SWA Fundraisers (They help you to help us!)



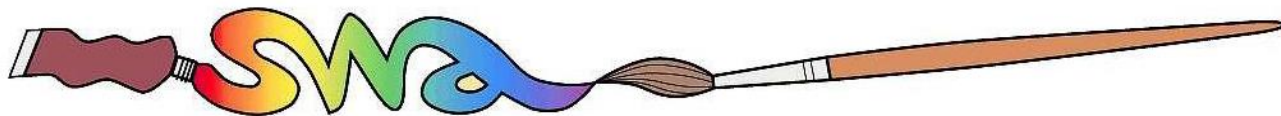
Kroger makes quarterly donations to SWA through your shopping! Go to www.krogercommunityrewards.com. If you already have a Kroger's Plus card, create your account and input your card number. In 7 to 10 days after shopping you will notice at the bottom of your receipt a donation was recorded for SWA.



Colors of Nature offers SWA members a 20% discount on their watercolors and customized brushes that are 100% vegan and cruelty-free. The savings are matched and donated back to SWA. The company will post member's art work created with their paints on their website, blog and direct people to a site of the artist's choice. SWA discount code: Members-20-SWA <http://shop.colorsofnature.com>.



Amazon Smile donates .05% of your online purchase back to SWA. Choose Society of Watercolor Artists as your nonprofit organization.



2018 SWA Officers and Standing Committee Members

2018 Board of Directors

President: *Janet Southern*

Secretary: *Dawn Kerbs*

Treasurer: *Pat Banell*

Exhibits: **OPEN**

Education/Workshop: *Bill Dale*

Membership: *Mary Bell*

Communications: *Skeeter Murley*

Past President: *John Nickell*

2018 Standing Committees

EDUCATION COMMITTEE

CHAIR: Bill Dale

Members are:

ASEL Painting of the Month/Year: Mary T House

Monthly Critique: Bob Cook

Programs: Alice Hoener

Social Chairman (Refreshments/Receptions): Rhonda Barefield

Workshop Chair: Bill Dale

PUBLICITY & COMMUNICATION COMMITTEE

CHAIR: Skeeter Murley

Members are:

Newsletter Editor: Elaine Jary

Photography: Veronica Ritchey

Print Editor for Catalogs: Skeeter Murley

Publicity: **OPEN**

Website Manager: Skeeter Murley

Website Consultant: Sharon Giles

Facebook & Twitter: Skeeter Murley

EXHIBITION COMMITTEE

CHAIR: **OPEN**

Members are:

Hanging Volunteers: Skeeter Murley, Bill Dale, Janet Southern

Membership for Exhibitions: Mary Bell

Monetary Entries for Exhibitions: Treasurer

SWA Signatures: Veronica Ritchey

Website Entries & Submissions: **OPEN**

Prize Sponsors: **OPEN**

FINANCE AND MARKETING COMMITTEE

CHAIR: Pat Banell

Members are:

Director of Finance & Budget: Pat Banell

Fantastic Fans: Shirley Nichols

Professional Standards (yearly audit): Brenda Morgan

MEMBERSHIP COMMITTEE

CHAIR: Mary Bell

Members are:

Director of Membership: Mary Bell

Greeters: Shirley Nichols, Linda Taylor, Suzy Ware

MEETING VOLUNTEERS (Not a committee)

House & Properties: **OPEN**

Hospitality: Rhonda Barefield

Painting of the Month: Mary T House

Programs/Assistant to Demo Artist: **OPEN**