

SWA

Society of Watercolor Artists

Fort Worth, Texas

October 2018

Letter from the President

It is now officially fall, but it sure doesn't feel like it. Hopefully, we will get some colder weather and the trees will begin to turn, lending themselves to be great subject matter.

The Membership Show is now installed at the UNT Atrium and will remain in place for two months. So, you have plenty of time to see the beautiful art that your fellow members have produced. I must say I am impressed by the turnout of volunteers for installation day. We had so many people helping that the show was completely installed in less than two hours. I want to profusely thank all those who showed up to help. You can be proud of the job you did and know that you are supporting SWA.



The reception for the show will be **November 4th, 2:00-4:00 PM in the Atrium**. At the October meeting, Rhonda Barrett will let everyone know what type of food to bring for sharing. We will announce the award winners around 2:30, give or take a few minutes. Then, we can all have time to visit and look at the exhibit in detail. I remember last year that we had members still visiting after the end of the reception. That just filled me with so much hope for the growth of fellowship in SWA. At the next meeting, we will bring up the topic of allowing watercolor canvas as a substrate for show entries. We need to discuss the pros and cons and how to handle the presentation for shows. If you have any ideas or concerns, please email me at janet.southern@att.com or Skeeter Murley at swaexhibitions@gmail.com.

Lastly, I am calling for members to step forward to take on the responsibility for board members for next year. We will need to replace the president, treasurer, secretary, and membership chair. There will also be various committee positions that will need to be filled. I will remain on board as past president only in an advisory position if asked.

Happy Painting and see you at the October meeting,
Janet

ASEL ART AWARDS Artist of the Month Competition

SWA members are invited to bring a completed piece to our monthly meeting. The artwork is shown anonymously with each member in attendance voting for their favorite. After winning 1st place, an artist retires from the competition for the remainder of the calendar year. Those who win 2nd place may continue to compete with other pieces of work. Art work previously shown in a SWA juried exhibit is not allowed. The first place wins a \$25 Asel gift certificate and 2nd place wins a \$15 gift card. **In**

November all first place pieces during 2018 will return for selection of “Artist of the Year.” Many thanks to Mary T House who chairs this fun event for us each month! Be sure and thank Asel Art Supply when you shop at 825 Foch Street. Plan to bring your art to our next meeting **October 15, 2018.**



September Painting of the Month Winners



1st Place: Bob Cook, “Sailing Fast”

2nd Place: Sondra Carr, "Seeing Better Days"



2018 Demo Artists

January	Nancy Maas
February	Darla Bostick
March	Michael Holter
April	Don Andrews
May	Cecy Turner
September	Sarah Graham Harman
October	Justin Burns
November	Bev Boren
December	Christmas Party

Christmas Party

*December 4, 2018 at 7:00 p.m.
El Fenix Mexican Restaurant
6391 Camp Bowie Blvd, Ft Worth*

Come join us for fun and fellowship! We will have a Chinese auction, like last year, so please bring a wrapped painting or art related gift for the gift exchange!

Treasury Report : September bank balances: Checking: \$20,764.01 Building Fund: \$15,640.08

September Demo by Sarah Graham Harman

Sarah chose to paint a portrait for our demo, using phthalo blue, cadmium red and aurelion yellow for the skin tones, adding alizarin crimson to the flesh color mix for lips. She works in lots of layers, and she likes to keep the under layers loose so the painting is more organic. She loves quin burnt orange and used it for the hair. She uses phthalo blue or Prussian blue for the background, and “dirties it up” with brown or quin orange to tone it down. She said, “Don’t be afraid to ruin today’s painting in order to make a better one tomorrow.” Other tips:

- Have a variety of soft and hard edges.
- Use the same color in several areas of the painting, i.e., in the background, hair and shadows, to create harmony.
- Less is more with eyes and other parts of the face you are enamored with.
- Use the same colors and mix variations of the skin tone, to paint values and temperature changes.
- Try to have a balance of cool and hot temperature areas.
- There’s usually what Sarah calls the “fistfight stage” of a painting, where you don’t like the result and might feel like the painting isn’t working. Keep at it; it might work out.



Reference Photo



“The Paint Out”

New Dates and Time

Paint every 2nd Thursday of the month 2 - 6 pm.

Next Session: October 11

The Russell Farm Art Center in Burleson, Texas.

405 W. CR 714, Burleson, TX

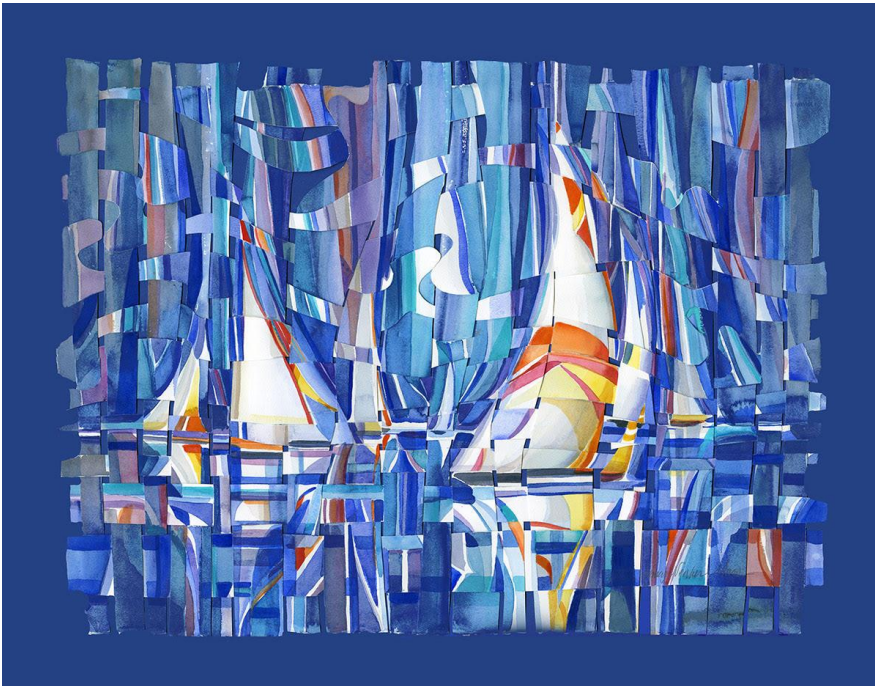
817-447-3316

mspaun@burlesontx.com

- *Bring your own paints and materials.*
- *Water will be provided, but you might want your own snack.*
- *Come join the Fun & Interaction with other Artists*
- *A \$10 fee is taken at the door for the use of AC and utilities*

Hope to see you soon for a wonderful creative time.

Member News



Nancy Maas:
"Joyous Sails," a watercolor weaving (32" x 40"), was awarded third prize in the all-Michigan juried show, Charlevoix, MI, by Phil Fisher, Sarasota, FL.

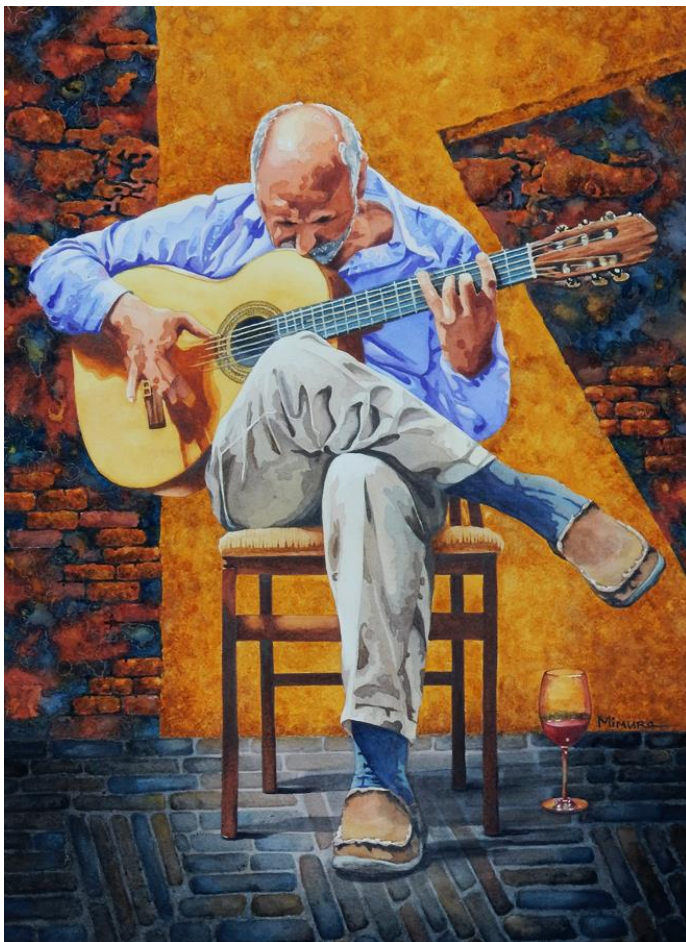


Iok-Hou Pang's "Serenity" won first place in watercolor in the 2018 Grand Prairie Art Show.



Muriel Mimura's painting "Severo - San Miguel 2" was accepted into the 50th Watercolor West International Juried Exhibition (juror Katherine Chang Liu). The exhibition will hang October 13 to December 16, 2018 at the City of Brea Art Gallery, 1 Civic Center Circle, Brea, CA. Also, at the 2018 55th Southwestern Watercolor Society Membership Exhibition, Muriel's painting "Reflection - Cassis" won the Asel/QoR Award.

Muriel will be one of five artists profiled in the "Ones to Watch" article in the December 2018 edition of *Watercolor Artist* (nominated by John Salminen). The magazine is scheduled to be distributed in October 2018.



Jean Cole received her signature membership in the Philadelphia Watercolor Society when her painting "It Rained in Pennsylvania" was accepted into the 39th International Exhibition. Congratulations, Jean!



Shirley Nichols, a new member of the Fort Worth 15, sold "Summer Heat", Watercolor on 300 lb. paper on gallery night at the Fort Worth Community Arts Center.



Celene Terry's painting, "Perched on the Rim", was juried into the 55th Annual Southwestern Watercolor Society Membership Exhibition held at the Eisemann Center in Richardson during the month of September.



Mike Mazer will be exhibiting in the International Guild of Realism's 13th Annual Juried Exhibition in Santa Fe, New Mexico in October. He won First prize in Watercolor at the Arts Affair in Quincy Mass with over 15 regional art associations participating, and recently exhibited in the Cape Cod Art Center's National Show, in Dennis, MA. "Dinghy MS 5128 BT" won First place at the Arts Affair.



Robert Cook, signature member of the SWA, has been named Art Commissioner for the city of Granbury. His painting "Sailing Fast", which won the painting of the month in Sept, has been accepted into the LGAA fall open Show.



Kathy Cuning had three pieces selected for the Kansas Watercolor Society show at the Mark Arts Gallery in Wichita Kansas. The show runs from October 19-Jan.5.



Five SWA members won awards at the 2018 55th Southwestern Watercolor Society Membership Exhibition:

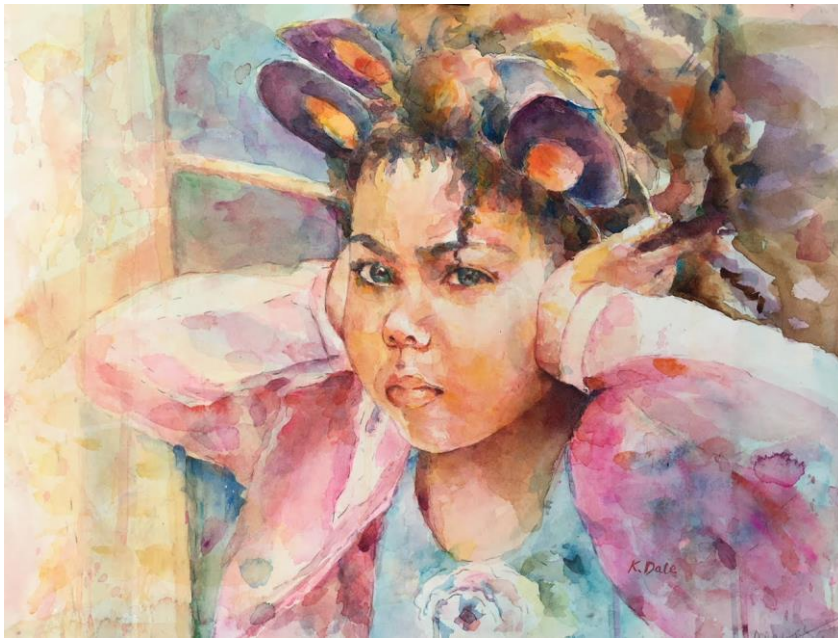
Krystyna Dale – “Genevieve” - Blick/Winsor Newton Award

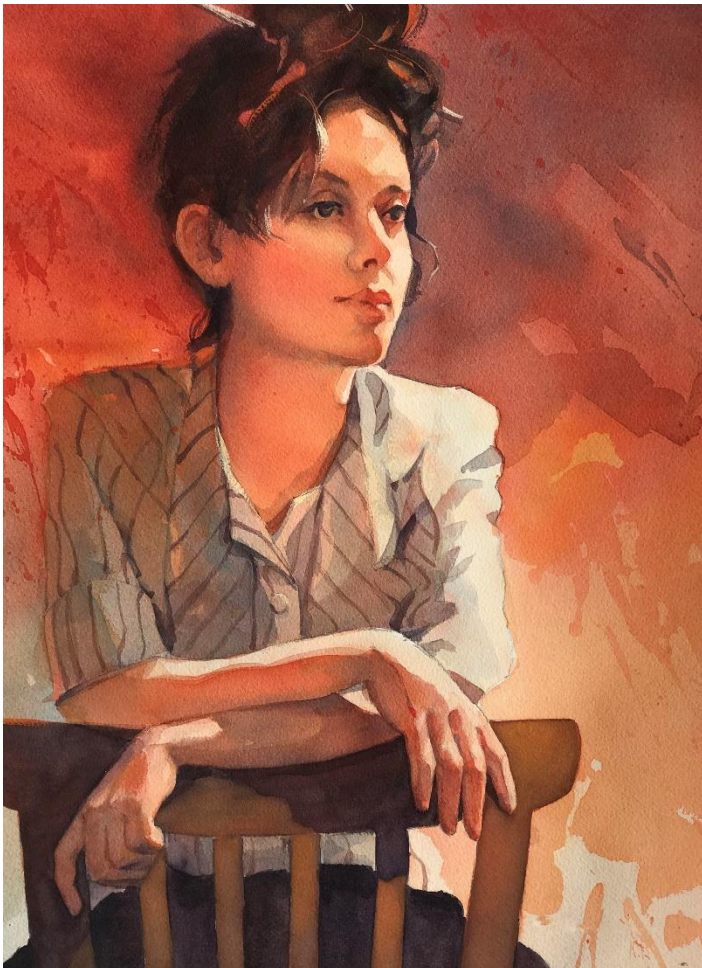
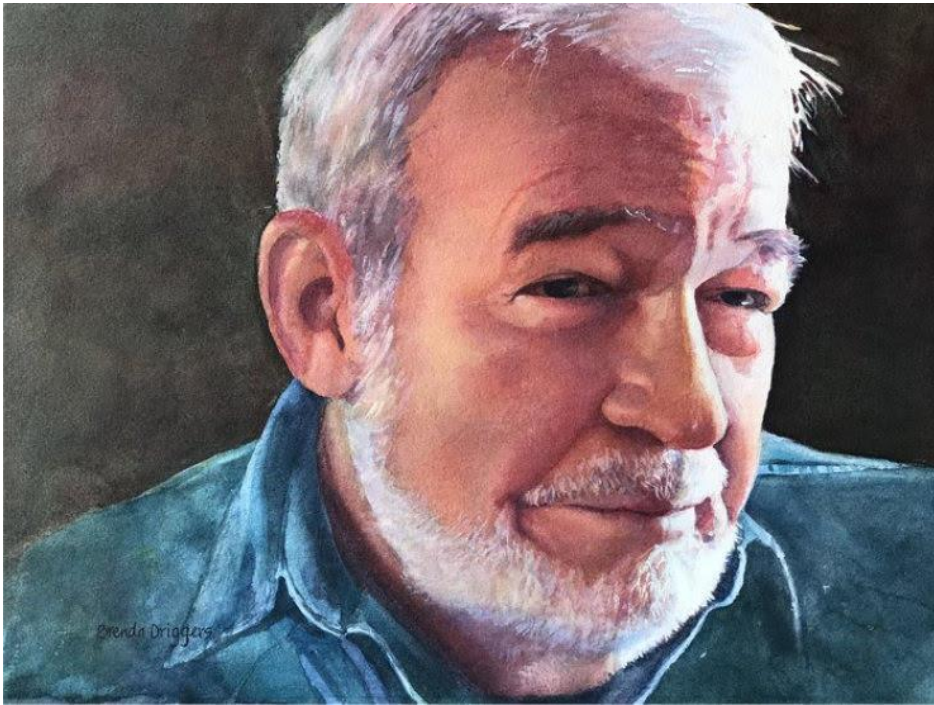
Ann Winchester – “ Another Loli’s Pink Hair” - Jack Richeson/ Blick Award

Brenda Driggers – “Ron” - 3rd Place SWS Award

Bill Dale – “Sanguine” – 2nd Place SWS Award

Muriel Mimura - “Reflection – Cassis” won the Asel/QoR Award (pictured previously)





SWA membership runs on a calendar year January through December

You can join SWA anytime during the year. Our official membership campaign is in October as our regular year runs with the calendar: January through December. Those who join mid-year do not receive a discounted membership fee, but they are eligible for the membership juried show in December which is for the 2018 members only. We will not be meeting during the summer months and will resume again in September.

We like new members...invite your friends! The first visit is free.

Membership includes these benefits:

- ✚ Fellowship with like-minded creative folks
- ✚ Post your art work on our Facebook page
- ✚ Free monthly SWA newsletter
[Http://www.facebook.com/SWAwatercolor](http://www.facebook.com/SWAwatercolor)
- ✚ Entry discount for any SWA show
- ✚ Free image on the SWA Members Gallery
- ✚ Annual Juried Membership Exhibition
- ✚ Buy space on the SWA Premium Gallery for \$20
- ✚ Annual Juried International Exhibition
- ✚ While maintaining SWA membership earn SWA Signature Membership after selection to 5 juried exhibitions our juried exhibitions (without disqualification)
- ✚ Asel Art Supply 20% discount
- ✚ Fun competitions
- ✚ December Holiday Party and painting swap
- ✚ ASEL Art of the Month Contest

Our Monthly meetings are held at the UNTHSC, Everett Building. After you turn from Camp Bowie to Clinton St turn left into a sloping parking lot beyond the vacant kiosk. We are on the bottom floor of the building to the right corner. Watch for a banner on the parking lot with directions to our room (or check the map on the website)

5:45pm Board Meeting
6:00pm Critique (bring in 1 or 2 works for some friendly advice)
7:00pm Brief business notices

Ongoing SWA Fundraisers (They help you to help us!)



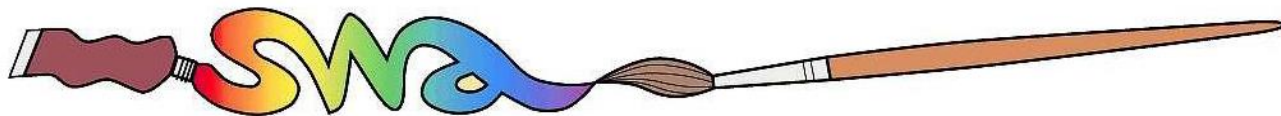
Kroger makes quarterly donations to SWA through your shopping! Go to www.krogercommunityrewards.com. If you already have a Kroger's Plus card, create your account and input your card number. In 7 to 10 days after shopping you will notice at the bottom of your receipt a donation was recorded for SWA.



Colors of Nature offers SWA members a 20% discount on their watercolors and customized brushes that are 100% vegan and cruelty-free. The savings are matched and donated back to SWA. The company will post member's art work created with their paints on their website, blog and direct people to a site of the artist's choice. SWA discount code: Members-20-SWA <http://shop.colorsofnature.com>.



Amazon Smile donates .05% of your online purchase back to SWA. Choose Society of Watercolor Artists as your nonprofit organization.



2018 SWA Officers and Standing Committee Members

2018 Board of Directors

President: Janet Southern

Secretary: Dawn Kerbs

Treasurer: Pat Banell

Exhibits: Skeeter Murley

Education/Workshop: Bill Dale

Membership: Mary Bell

Communications: Skeeter Murley

Past President: John Nickell

2018 Standing Committees

EDUCATION COMMITTEE

CHAIR: Bill Dale

Members are:

ASEL Painting of the Month/Year: Mary T House

Monthly Critique: Bob Cook

Programs: Alice Hoener

Social Chairman (Refreshments/Receptions): Rhonda Barefield

Workshop Chair: Bill Dale

PUBLICITY & COMMUNICATION COMMITTEE

CHAIR: Skeeter Murley

Members are:

Newsletter Editor: Elaine Jary

Photography: Veronica Ritchey

Print Editor for Catalogs: Skeeter Murley

Publicity: **OPEN**

Website Manager: Skeeter Murley

Website Consultant: Sharon Giles

Facebook & Twitter: Skeeter Murley

EXHIBITION COMMITTEE

CHAIR: **OPEN**

Members are:

Hanging Volunteers: Skeeter Murley, Bill Dale, Janet Southern

Membership for Exhibitions: Mary Bell

Monetary Entries for Exhibitions: Treasurer

SWA Signatures: Veronica Ritchey

Website Entries & Submissions: **OPEN**

Prize Sponsors: **OPEN**

FINANCE AND MARKETING COMMITTEE

CHAIR: Pat Banell

Members are:

Director of Finance & Budget: Pat Banell

Fantastic Fans: Shirley Nichols

Professional Standards (yearly audit): Brenda Morgan

MEMBERSHIP COMMITTEE

CHAIR: Mary Bell

Members are:

Director of Membership: Mary Bell

Greeters: Shirley Nichols, Linda Taylor, Suzy Ware

MEETING VOLUNTEERS (Not a committee)

House & Properties: **OPEN**

Hospitality: Rhonda Barefield

Painting of the Month: Mary T House

Programs/Assistant to Demo Artist: **OPEN**