



SWA October Notes 2015

October 10th Deadline to Enter Upcoming Juried Membership Exhibition at the Fort Worth Community Art Center...Awards of \$2000

Is there anything more exciting than showing off the talent of one's own art association? Unlike the International Show (which always brings great art, but sometimes from people not invested in our organization), the Membership Exhibition is our chance to show Fort Worth and the North Texas area what we do best...Paint! If you have missed entering a few SWA exhibitions, this is one you won't want to pass up. We have contracted with the Fort Worth Community Art Center to show our work in one of their galleries for the month of November. Folks will be viewing the works juried by local talent, Tony Saladino. Tony was one of the early members of SWA and returns now to judge the winning pieces. The art gallery promises to bring a lot of traffic to our show and the gallery night reception is one that brings large crowds to view all the galleries of the facility on the same night. Be sure to mark your calendar and plan your entries now. We will be once again using the CaFE' online system for entries and juror selection. As a precautionary note, artists can join SWA now to participate in the Membership Exhibition,

however they should be aware that a new membership this late in the year is only going to permit eligibility to this show. Our calendar year is January to December. We begin taking our dues for 2016 in October. This show is for those members who joined for 2015. Of course, new memberships can be accepted to allow 2015 participation, but be sure you understand those who join this late in the year are not going to see other membership exhibition benefits in 2016 unless they also pay membership for the next year!

If you have answered a previous Call for Entry through Café you already have a free account portfolio. It's time to add to that portfolio and choose your best for this year's exhibition!

Exhibit Chair is James Stewart who can be contacted at swawatercolor@gmail.com

Entry fee is \$35 for submission of 3 images. No more than one image per artist may be selected.

Our fee for renting the gallery space is quite a commitment, so please plan to participate in this event.

Enter **NOW** for 2015 Membership Exhibition at Fort Worth Community Arts Center

October 10: Deadline – Enter exhibition online through CaFE' at

https://www.callforentry.org/festivals_unique_info.php?ID=2809&sortby=fair_name&apply=yes
Our passcode is 4444

October 17: NOTIFICATION DATE (will be emailed to entrants)

October 30: SHIPPED PAINTINGS DUE

November 2: HAND DELIVERED WORK DUE - Time to be announced (TBA)

November 6, Friday: RECEPTION – time - TBA

November 28: Pickup Artwork – time - TBA

November 30: SHIPPED WORKS RETURNED

Delivery, Reception and Pickup: Fort Worth Community Arts Center, 1300 Gendy Street, Fort Worth, Texas 76107

Phone: 817-738-1938 Hours of Operation: Mon-Fri 9am-5pm, Sat 10am-5pm, Sundays CLOSED

Fall FANTastic Fans Contest at our October Meeting

Many thanks to Celeste McCall and Mary House who have both contributed to a prize fund for the FANTastic Fans Contest this year! **Prizes are \$30 for 1st place. With 2nd, 3rd and 4th place fans = \$15 each** (only one prize per artist). Shirley Nichols is the director of this fun event!



Treasurer's Report

Bank balances at end of September: Checking: \$16,953.16 Building Fund: \$15,362.82

2015 SWA 4th Annual Invitational Exhibition Set for October 3 (this Saturday) take-in at noon



In an effort to thank our SWA volunteers, a special exhibition will be held in October at the UNT Health Science Center Atrium Gallery. Those who have contributed their talent as well as volunteered their time will be honored. The installation date is set for this Saturday, 3 October between noon and 1pm. The reception and strike of the show is scheduled for 31 October—1pm.. Those who volunteer their time and talent to SWA and are invited to participate are:

Rhonda Barefield
Darla Bostick
Lynne Buchanan
Marie Coerver
Bob Cook
Debbie Downing
Norma Fitzwater

Sharon Giles
Hugh Heaton
Susan Henry
Mary House
John James
Paula Johnson
Judy Kristoff

Nancy Maas
Celeste McCall
Laurin McCracken
Brenda Morgan
John Nickell
Shirley Nichols
Veronica Richey

Jim Stewart
Janet Southern
Mary Stitt
Arnold Watson
Jo Williams
Ann Winchester

Our apologies if your name has accidentally been left off this list. Please do not hesitate to notify at swawatercolor@gmail.com Also, when you come to the October meeting be sure to walk down to the gallery and view the art work!

September Demo by Janet Southern

Pictured is the demo piece Janet Southern shared with SWA at the October meeting.

Tips: Trace painting onto paper. Put mask to cover important white areas. One can use a ruling pen to do this.

Mix black watercolor paint with water but add Schmincke Aqua Fix Medium to make it more waterproof. Paint the black areas of the tiger. Let dry

Then paint the tiger as normal. The black is now almost waterproof so it will stay where it was painted as the additional layers of color are added.

To add granulation in the furry shadow areas add Hematite by Daniel Smith. Paint background with various colors wet in wet. Remove masking from white areas and blend pale color onto some areas to make it look more realistic.



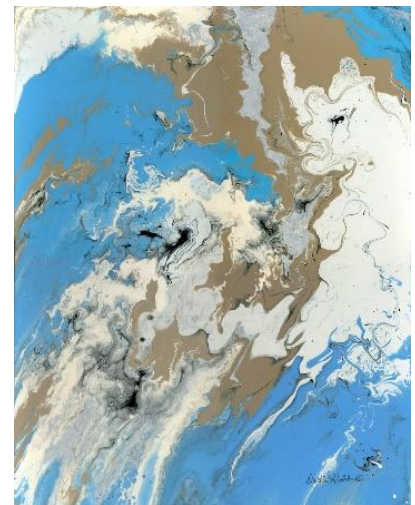
SWA SEPTEMBER BUSINESS:

- Jim Stewart was elected by the membership for the position of Exhibit Chair.
- Our November meeting will include our yearly election of officers for 2016. Mary Stitt volunteered to Chair the Nominating Committee. We need volunteers for President, President-Elect and Membership Chair. Contact her at swawatercolor@gmail.com if you wish to serve.
- Also the SWA members voted to allow non-framed paintings in the "Painting of the Month". So either matted-paintings or framed paintings will be accepted. This was done to increase participation.

SWA Meeting Monday, 19 October with Demo Provided by Darlia Hobbs

Darlia is a pro at mixed media and always provides interesting demos. Be sure you don't miss this one! Snacks and goodies are always welcome to the meeting! Please contribute.

Darlia Hobbs has many water influenced works from life experiences on Eagle Mountain Lake, the Gulf of Mexico, the Pacific Ocean, and more recent travels over the Atlantic Ocean to European rivers and the Mediterranean, North and Baltic Seas. Throughout her life, Darlia Hobbs has enjoyed different forms of art and design. It wasn't until 2005 that she was encouraged by art educator, Judy Sager, to enter an abstract painting into her first art show. Darlia won an award in the novice division. Ten years later, Darlia has completed over 25 art workshops and a few years of art classes, and won over 42 awards - including Best of Show, first places, and People's Choices. Now, some of her most rewarding time is spent teaching art workshops and doing art demonstrations for several art associations. Being a member of the Fort Worth 15 (FW15), Arlington Visual Arts Association (AVAA), Northwest Art Association (NWAA), Mid-Cities Fine Arts (MCFA), Trinity Arts Guild (TAG), Granbury Art Association (GAA), and Society of Watercolor Artists (SWA, signature member) has been a nourishing education. In addition to many shows at the FWCAC, Darlia has shown her artwork at museums, galleries, community centers, Fort Worth Petroleum Club, city hall, Tarrant County Courthouse, and many libraries. Currently, her artwork is showing in some showrooms at the World Trade Center in Dallas, and some physicians' and attorney's collections. Darlia absorbed the flowing abstract technique, ***Fantastic Pours***, when she first experienced it. She hopes our SWA members and guests tread through the steps to imagine their own wavy creations, when they scope the worthwhile results.



Paint Can Fly (purple, yellow, white: acrylics and a special medium that will be demonstrated at SWA 10/19/15)
Kelpie's Torrent (blues, brown, black and white: acrylics)

Members in the News

Nancy Maas has 2 pieces juried into the 2015 Fine Arts Exhibition at Crooked Tree Arts Center, Petoskey, MI, 19 Sept-21 Nov. Both "Breezy Sails" and "Winter (Golf) Course" are large watercolor "weavings."



Lynne Buchanan, Celeste McCall, and several other SWA members have paintings in the Trinity Arts Guild Members Exhibit in Bedford, Texas.

Lynne Buchanan won 1st place in oil and acrylic at the Fort Worth Botanical Gardens Art show and has a piece in The Texas Art Hop at the Georgetown Arts Center. There were 1000 entries submitted.

Bob Cook will be featured in the November *Plein Air Artists Magazine* sharing various watercolor techniques and in October he is featured in the Daniel Smith newsletter blog.

Laurin McCracken is scheduled for the Visual Arts Society of Texas demo at their 1 October meeting, 7pm at the Center of Visual Arts in Denton.

Denis Benjamin had his iris painting accepted and displayed at the September Fort Botanical Gardens Art show. (below)



Denis Benjamin's "Iris", Darla Bostick's "Bananas For Sale" and "Sweet Tooth", Celeste McCall's "First Trail Ride."

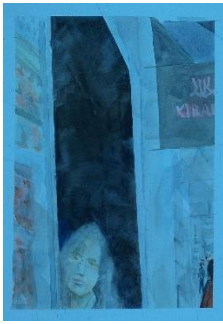
Darla Bostick's "Bananas For Sale, Columbia" (pictured above) was accepted to the Seven-State Biennial Juried Exhibition beginning 26 September at the Nesbitt Gallery in Chickasha and rotates to the Charles B Goddard Center in Ardmore 9 November. It closes 25 November in Ardmore and then opens at the Museum of the Red River in Idabel where works can be viewed 8 December through 31 January. Her "Sweet Tooth" won the People's Choice Award for the Visual Arts of Lewisville Fresh Ideas Show.

Jean Cole and John James were both chosen for the Philadelphia International Exhibition in Pennsylvania. Jean's "Southside Landmark" of the Fort Worth old grain elevators places her one acceptance from membership signature status!

Norma Fitzwater had a painting accepted to Gallery 211 in Athens, TX. (see above)

Karen M Anderson won Honorable Mention in the Texas Visual Arts Association "Nonobjective Show" at Plaza of the Americas downtown Dallas.

Hugh Heaton is among those chosen for the Pennsylvania Watercolor Society 36th International Juried Exhibition. (see image below)



"Lost Girl" by Hugh Heaton, "Nap Time Together" by Mindy Faubion and Norma Fitzwater's work

Mindy Faubion won People's Choice Award at the Visual Arts Society of Texas Membership Show at the UNT on the Square Gallery in Denton. She has 5 paintings exhibited at the Emily Fowler Library in Denton. (see painting above)

Several SWA members were accepted to the 52nd Membership Show for Southwestern Watercolor Society. The following are those who took home honors: 2nd place **Marilyn Bourbon** and Merchandise Awards for **Suzanne-McNeill Sparks**, **Kenji Nishikawa** and **Rance Jones**.



"World News" by Marilyn Bourbon, "Grasshoppers 5" by Suzanne McNeill Sparks, "Life Line" by Kenji Nishikawa, "Fyre From the Mountain" by Rance Jones

We want your news! Send newsletter items to Darla Bostick at: darlabostickart@gmail.com

Dates Announced for SWA 2016 International Juried Exhibition

Plans are well underway for the 2016 International Show at the Central Library in Fort Worth. More details will be shared as the show develops. The juror is Frank Eber

Tuesday, March 1: Deadline at midnight
Saturday, April 16, Noon-2pm: Installation

Saturday, April 30, 2-4pm: Reception/Awards
Saturday, May 28, Noon-2pm: Removal of Show

ASEL ART AWARDS: You could be our artist of the month!



framed piece to our monthly meeting. The artwork is shown anonymously with each member in attendance voting once for their favorite. After winning 1st place, that artist retires from the competition for the remainder of the calendar year. Those who win 2nd place may continue in the competition with other pieces of work. Art work previously shown in a SWA juried exhibit is not allowed. The first place winner receives a \$25 Asel gift certificate and 2nd place wins a \$15 certificate. In November all first place pieces return for a final selection of "Artist of the Year." Many thanks to Mary T House who chairs this fun event each month! Thank Asel Art Supply when you shop at 825 Foch Street, Fort Worth. Incidentally, at the September meeting it was decided to allow matted images (no frame required)

SWA members are invited to bring a completed,

2015 List of 1st Place Winners: January: Debbie Downing, February: Lynne Buchanan, March: Hugh Heaton, April: Suzy Ware, May: Iok-Hou Pang, Sept: Lynn Morgan



1st Place: Lynn Morgan "Red Dhow at Dubai" and 2nd Place: John Nickell "Tahiti Evening"



New Member: Samantha Swayne of Fort Worth, Tx
skswayne11@gmail.com

Our website address is: www.swawatercolor.com
SWA membership runs on a calendar year of Jan-Dec

We like new members...invite your friends! First visit is free.

Membership includes these benefits:

- Fellowship with like-minded creative folks
- Free monthly SWA newsletter
- Entry discount for any SWA show
- Annual Juried Membership Exhibition
- Jo William's critique session before meetings
- 20% discount at Asel Art Supply
- Fun competitions (FANTastic Asian Fan Contest)
- Participation in Art of the Month Contest
- January "New Members" Pizza Party in January
- Post your art work on our Facebook
[Http://www.facebook.com/SWAwatercolor](http://www.facebook.com/SWAwatercolor)
- Free image on the SWA Members Gallery
Submit to cst136@yahoo.com
- Buy space on the SWA Premium Gallery for \$20
- While maintaining SWA membership earn SWA Signature Membership after selection to 5 of our juried exhibitions (without disqualification)
- December Holiday Party and painting swap
- Field trips to fun artsy event



Our Monthly meetings are held at the UNTHSC, Everett Building. After you turn from Camp Bowie to Clinton St turn left into a sloping parking lot beyond the vacant kiosk. We are on the bottom floor of the building to the right corner. Watch for a banner on the parking lot with directions to our room (or check the map on the website)

5:45—Board Meeting

6pm—Critique with Jo Williams (bring in 1 or 2 works for some friendly advice)

7pm—brief business notices

7:15-9pm our demo, snack and art of the month

Saturday, 3 October, noon-1pm: SWA Invitational intake

Saturday, 10 October: Membership Exhibition Deadline

Monday, 19 October: Regular meeting/Darlia Hobbs demo
FANTastic Fans Fall Contest

Saturday, 31 October: Reception and Strike Invitational
Exhibition at UNTHSC (times unavailable)

Monday, 2 November: Installation of Membership
Exhibition, Fort Worth Community Art Center

6 November: Membership Reception, 6-9pm

Monday, 16 November: Regular meeting/Mary Ann White

Saturday, 28 November: Strike Membership Exhibition

December Party replaces regular meeting: TBA



It's Never Too Late to Join SWA for 2015

Our membership for SWA runs on a calendar year January-December. It is never too late to pay dues for 2015, as it will be accepted year round. You can mail your payment or pay online with pay pal through our website.

<http://www.SWAWatercolor.com>

Please note, however, when you join for 2015 you are entitled to membership perks for the 2015 year. Our annual Membership Exhibition falls close to the time we are taking up dues for 2016. Every year it confuses folks. To help clarify what seems to be overlapping dues periods, here is brief schedule for our second half of the 2015 year. We will resume monthly meetings in September and continue for October and November. In December we have a holiday party which includes spouses/significant others. Your 2015 dues also entitles you to also participate in the Membership Exhibition which should receive excellent viewing at the Fort Worth Community Art Center. Details are yet forthcoming on that but it is in the Fall. The 2016 dues will be payable in October so that the Membership Directory can be printed and ready for distribution at the January meeting. Your 2016 dues does NOT entitle you to enter the 2015 Membership Exhibition

Ongoing SWA Fundraisers (They help you to help us!)



makes quarterly donations to SWA through your shopping. Go to www.krogercommunityrewards.com If you already have a Kroger's Plus card, create your account and input your card number. In 7 to 10 days after shopping you will notice at the bottom of your receipt a donation was recorded for SWA. NOTE: Albertsons has stopped this program.



offers SWA members a 20% discount on their watercolors. They now carry customized brushes that are 100% vegan and cruelty-free. Monthly the savings given members are matched and donated back to SWA. The company will post member's art work created with their paints on their website, blog and direct people to a site of the artist's choice. SWA discount code: Members-20-SWA <http://shop.colorsofnature.com>



donates .05% of your online purchase back to SWA. Choose Society of Watercolor Artists as your nonprofit organization. It is listed as Denton, TX for its location...we are working to clear that up. Tell your friends!

Are you interested in helping with Membership Management? Let us know NOW! Our intake of dues for 2016 begins in October so we need to get going on this. Contact Celeste McCall.

Incidentally, the Membership Management is done by 2 people. One does the printing of the directory and the person we need now keeps records of dues payments, etc.

2015 BOARD OF DIRECTORS

President: Celeste McCall
President-Elect: **OPEN**
Secretary: Judy Kristoff Huebener
Treasurer: Hugh Heaton
Exhibit Chair: James Stewart

Education and Workshop Chair: Lynne Buchanan
Communications Chair: Bob Cook
Membership Chair: **OPEN**
Past President (Emeritus) - Darla Bostick

STANDING COMMITTEES

EDUCATION COMMITTEE

CHAIR - Lynne Buchanan
Committee Members Are:
Director of Programs: Nancy Maas
House & Properties: **OPEN**
Monthly Critique: Jo Williams
Social Chairman: Marie Coerver
Painting of the Month: Mary T House
Paint-Out Coordinator: **OPEN**
Director of Workshops: Lynne Buchanan
Field Trips: Darla Bostick

MEMBERSHIP COMMITTEE

CHAIR - **OPEN**
Committee Members Are:
Editor of the Annual Membership Directory: Paula Johnson
Director of Membership: **OPEN**
Greeters: Shirley Nichols

PUBLICITY & COMMUNICATION COMMITTEE

CHAIR - Bob Cook
Committee Members Are:
Director of Publicity: Bob Cook
Newsletter Editor: Darla Bostick
Print Editor: **OPEN**
Website Manager: Celeste McCall
Website Consultant: Sharon Giles

Photography: Veronica Ritchey (meetings)
Gordon Henry (exhibition events)

FINANCE AND MARKETING COMMITTEE

CHAIR - Hugh Heaton
Committee Members Are:
Director of Finance & Budget: Hugh Heaton
Grants: Watson Arnold
Professional Standards (yearly audit): Brenda Morgan
Japanese Gardens Festival: Marie Coerver
Fantastic Fans: Shirley Nichols

GRANTS COMMITTEE

CHAIR – Watson Arnold

EXHIBITION COMMITTEE

CHAIR – Jim Stewart
Committee Members Are:
Website Entries & Submissions: Bob Cook
Monetary Entries for Exhibitions: Hugh Heaton
Membership Chair for Exhibitions: **OPEN**
SWA Signatures: Debbie Downing
Hanging Volunteers: John James, John Nickell, Norma Fitzwater,
Shirley Nichols, Jim Stewart, Debbie Downing