

Society of Watercolor Artists July Notes 2013

Hello to Friends of SWA & Members!

The International Exhibition is behind us and we had a special day for 6 members who received their SWA Signatures. Lok-Hou Pang earned his in 5 consecutive shows and that doesn't happen very often. James Tennison sold his painting and Bob Cook took home 3 honors in one show! Not only did he receive his signature, he won a Juror's Award followed by the People's Choice Award! Of 15 cash/merchandise awards SWA presented, 9 went to local artists, 5 to other states and 1 will travel to Italy. Fresh ideas are always a good thing. A change in leadership provides that. The transition allows a new way of doing things to be tried, and new faces! We have made a lot of changes in the last 2 years. I truly hope we can keep that going! Celeste McCall (a new member) is working to make our website better and more efficient. I'm anxious to see what magic she can work. We want to expand the site for member perks (details to come). We have news too concerning our December membership exhibition leadership.



I love mosaics. This is me at the Barcelona Palace of Music

SWA is looking for new faces in several other leadership roles. We need your help to fill the positions of President 2014, Treasurer and we are dividing the responsibilities of our Membership and Exhibition Chairs. Look on the last page of the newsletter for openings and pick one for yourself. C'mon, people! Those who sit back will watch SWA crumble. These positions are critical and must be filled. At our July summer board meeting we will review past programs, present new ideas, review bylaws and share new ideas. It's a good time to come see what goes on behind the scenes. You are welcome to join us at my home in Denton (2101 Woodbrook) for this meeting Sunday, 21 July, at 2pm.

Darla Bostick, President
(and newsletter editor)

InVision, Hulen Mall Exhibition Space Available to SWA Artists

Dr. Jan Dao (pronounced "Dow") has a beautiful office between Eye Masters and Dillards on the second level (ground level to parking lot) in the Hulen Mall. Her office is hosting a 2-month rotating exhibit of art by our members. Dr. Dao's office has gallery lighting and art work is visible from the mall walkway. Mary Stitt will be handling the rotation of SWA artists who wish to exhibit in the space. There is room for 6 paintings half sheet or larger. Shubha Mantri has her work up and will be followed by Ann Winchester for two months. If interested, contact Mary Stitt msmaryps@aol.com.



Our Volunteer of the Month: Judith Huebener



Last month we thanked our catalog volunteers for the 2013 SWA International Exhibition. Having the catalog printed is only the beginning. To cap off the process, the catalogs are passed to our secretary who makes sure they are inserted into the mailing cartons or made available at the end of the exhibit as artists pick up their works. Judy Huebener, our secretary, also mails catalogs to each sponsor with a note of thanks and sends one to our juror. Judy's work as secretary is kind of covert work. We don't see all the things she does for us. At the board meetings she takes notes and presents the business conducted the previous month. When you get an email blast as a meeting reminder, or to notify you the monthly newsletter is online, it is by Judy's hand. She also retrieves our physical mail. Judy does it all and makes it look easy...it's nice to see our new members contribute their time and talent to SWA!



SWA Members in the

Soon Warren is featured on Artists Network. View her video: http://artistsnetwork.tv/?et_mid=620783&rid=108654717 and an interview video: <http://www.youtube.com/watch?v=NE3MN67caNI>

Dave Maxwell is included in *Splash 14: Color and Light*. It is available through North Light Shop online. He also won an award at the OK National Exhibition in Oklahoma City.

Carol Rowley will be treasurer for Visual Arts Society of Texas and **Eloise Sears** as assistant.

Nancy Neaheer Maas' watercolor weaving "Birches in Winter" is exhibited at Smith College, Northampton, MA throughout the summer. She has a one person show of watercolors, collages and watercolor weavings -- "Magical Waters" at Elm Street Studio, Keller, TX from 7 August 7-5 October.

Michael Holter has a piece accepted in the SWS Exhibit and is scheduled 3-5 Dec to present a watercolor portrait workshop at Artists' Showplace in Dallas. (You can register now). If you missed Joyce Hicks at our SWA workshop, she is also presenting a workshop at Artists' Showplace.

Dorothy Bertine's work is filling the Goddard Gallery in Ardmore, OK during the month of July. An ice cream social is planned 21 July from noon-2 when she presents a talk about her work.

Darla Bostick has work through 2 August at the Texas Woman's University Gallery with Visual Arts Society of Texas Membership exhibition and 29 June-14 Aug she is part of the Visual Arts of Lewisville Fresh Ideas Exhibition. She is scheduled to be a July featured artist at the Midtown Gallery at Valley View Mall. The Gallery Walk/Receptions are Saturday, 20 July from 6-10pm.

Karin Michelle Anderson had 3 pieces juried into the DeSoto Art League Show, one of which won 3rd place Mixed Media.

Eloise and Ray Sears both were juried into the VAST show, with Eloise winning an award. Ray will have his work in the 2014 Calendar of Visual Arts Society of Texas in Denton. There were about 50 entries!

Jo Williams won an award in the VAST exhibition.

If you have news to share, notify Darla Bostick before the last week of the month <darlabostickart@gmail.com>



Treasurer's Report: Current Balance as of 20 May is \$20,006.92

Bank CD Total: \$15,252.17

Giving Back to the Arts

Presently no one has come forth to help with this program. If volunteers don't come forth before July ends, we will have to place this worthy program on the shelf! SWA voted to sponsor an art competition at a Fort Worth high school and encourage art students with art gift certificates as prizes (\$100, \$75, \$50). SWA members wishing to donate privately may do so. Jane Schneeberger is willing to form a small committee of interested SWA members (perhaps former art teachers?) to work with the art teacher/coordinator and design contest guidelines. SWA can present awards as winning work is viewed at a meeting. Please contact Jane at 817.557.3239 or email jlawberger@att.net. Since this project is slow off the ground, Jane suggested we implement it in the fall but details must be worked out during the summer!

New Leadership



Can you hear a big "Whoaaa Hooo!" We are very pleased to announce that Mary Stitt and Bob Cook will team up to be the Exhibit Co-Chairs for the Membership Exhibition in December at the UNTHSC. There has been a big push to divide the duties of this important position. Ideally the Exhibit Chair should supervise the other exhibit volunteers, rather than run the entire exhibit alone. If you can serve in any way, please contact either Mary msmaryps@aol.com or Bob prelim@sbcglobal.net. Look on the last page of the newsletter to see where you can assist. We can vote to accept them at the September meeting. Let's all support our exhibits in some way!

Art in the Garden, Fort Worth Botanical Center

The Fort Worth Botanical Center is hosting its 6th Annual Art in the Garden Exhibition. You can check it out at this link: [AIG 2013 Entry Form](#) or you may call the FW Botanical Society office at 817.763.0724

Who's Our Next Treasurer AND President?



We STILL need a treasurer! Janet Southern has more than fulfilled her multiple terms. It is time for someone to step up and take this position. Janet will train her successor. Our addition of pay pal to the website has simplified the effort of handling checks for dues and exhibit entries. Can you help? We also need someone to serve as President Elect and take over as president for 2014. Darla has served for 2+ years and will be turning her energy to producing the newsletter and serving as past president on the board. On Sunday, 21 July we will have a board meeting to plan the next year. This is the perfect time for our next Treasurer and President to come and see how we operate! Join us at Darla's home, 2101 Woodbrook in Denton at 2pm. Both positions require attendance at the monthly board meetings.

SWA FANTastic Fans Contest



When we come back in the fall for our September meeting it will be Asian themed! Not only are we hosting San Cheang as our demo artist, we will bring in our bamboo paddle fans for our annual FANTastic Fans Contest! If you haven't picked up your fans yet, they are available through Mary Stitt for \$1.50 each. Mary's phone number is 817.377.8709. She will have them at the summer board meeting in Denton also. Our demo artist acts as the judge, choosing 3 favorites. It is our hope to sell any fans contributed at the Japanese Gardens. While you are inside avoiding the heat, have fun painting your fans! There is no limit on the number each artist can submit. Don't miss out on the fun!

SWA 2013 International Reception and Awards

Did you miss the reception and awards for the recent exhibition? It was really nice. We had beautiful music filling the air courtesy of Charlene Baker. And gorgeous works of art were displayed on the walls around the Atrium Gallery. The food is always the best due to the efforts of gracious members and Marie Coerver at the helm. Six new signature members joined the ranks of those since 1981 when the Signature was initiated. We now have about 141 Signature Members in SWA. It was a splendid day!



(Above) Exhibit Chair Diane Petrushka with some of our winners, Randy Meador, Barbara Millican, Bob Cook, Shirley Nichols and Sarah Graham~~Barbara Millican's work was featured on the library exhibition banner while Charlene Baker played the piano for our enjoyment and appreciation.



Above are the new Signature Members Bob Cook, Muriel Mimura, Michael Holter, Lok-Hou Pang and Connie Logan-Levson book-cased by Darla Bostick, President and Diane Petrushka, Exhibit Chair. (Not pictured: Davilla Harding from Hawaii) Marie Coerver was our hostess extraordinaire who made the reception so special! I just can't resist including one more photo...Shirley Nichols painted "Uley and Me" and took home a Juror's Award. Below you can see the painting with the artist, and her grandson! How special is that???



Shipping Hint from Heloise Column:

"I needed to ship a painting. Professional packaging is expensive, so I decided to do it myself. I spotted two new swimming pool noodles and was inspired. I slit the foam lengthwise to the center; this allowed me to fit it over the edges of the frame. I cut the slit pieces for the top and bottom of the artwork, allowing a little extra to extend out past the frame. I used the leftover noodle pieces to protect the sides of the artwork. I cut two pieces of cardboard, to cover the front and back of the artwork, and taped the cardboard to the noodle pieces so that there was no tape on the artwork or the frame. With a little added packing material, it's ready to go."—May A from Glendale, AZ

EDITOR'S NOTE: You can get noodles at Dollar Tree.

YOU Are Invited! Summer Board Meeting

Usually our board meetings are held before the scheduled monthly meeting in Fort Worth. For our summer board meeting we take a field trip to Denton to Darla's home. Any members are welcome to come, especially those desiring to help with the leadership of SWA! The meeting is set for Sunday, 21 July at 2pm, 2101 Woodbrook in Denton. Come enjoy the afternoon with us and visit the mosaic gardens. Fresh mint iced tea and a snack will be provided. Call Darla for directions or questions: 940.320.5660

Member Spotlight ...Maria T House

Below: "Evening Falls" and "Newsbreak"



Maria is a familiar face at SWA and has been a dedicated member of SWA for some time. Here's a bit about her.

"Being part of SWA has kept me connected to my passion in watercolors. I enjoy being around other artists, sharing the same love of the water media. It is both energizing and fun. I have lived in Saginaw, Texas for 27 years, and am retired from Lockheed Martin Aeronautics. I started taking art classes at Lockheed Martin's Art group in the early 2000's. In 2004, I became a member of SWA, and in 2008, I attained my signature membership in SWA. I have received awards from several societies, and my work is in private collections. Mostly self-taught, I have attended several workshops by internationally and nationally known art instructors such as Judi Betts, Maureen Brouillette, Sterling Edwards, Joseph Fettingis, Steve Rogers, M. Douglas Walton, Jan Fabian Wallake, and Frank Webb. Often I paint realism with a twist of my own imagination. Sometimes I want to convey a certain mood, feeling, or just something that brings happy thoughts. I work mostly in watercolor and acrylics, but have done pieces in oils, pastels, ink and graphite. Presently, I am a member of SWA, Lockheed Martin Recreation Area Art Activity and Lake Granbury Art Association. In the past years, I have assisted with the White Elephant silent auction, been part of the group of artists representing SWA at the Japanese Gardens, and am presently helping with the Artist of the Month. My travels have taken me to Europe, Israel, Egypt, Mexico, Honduras, Dominican Republic and Haiti. It has been a source of inspiration for some paintings. My goal is to loosen up, try new things, and keep painting."

A New Leadership Position Created



Your current leadership group has been working on several goals that can only be met with membership participation:

1. Involve more of our membership as leaders
2. Break down responsibilities of current positions into more manageable commitments for volunteers
3. Provide good continuity from each position to the next leader.

Sounds good, right? This note has been in the last several newsletters with NO response. It makes sense to divide the responsibilities of Membership Chair and Exhibition Chair. Shirley Nichols has held Membership Chair for 4 years...that's a LOT of members who had Shirley as their first contact. We certainly could not expect more from her and she has been consistently diligent in her duties. Shirley is presenting a plan to split the duties in half (and she will continue with one part!) The Membership Director will maintain the roll of membership. Specifically this person would be available at meetings to accept membership applications, add them to the Membership Roll and send the secretary and president names as they join so new members can be properly welcomed and added to the email list. At times of exhibitions, the Membership Director also checks to see that those claiming membership are up to date. Our new Membership Director could sit with Shirley at the meetings and learn the ropes--then take over in October 2013 as our members renew for the next year. Contact Shirley if you are interested: 817.247.9091. The second position is Membership Directory Editor. This position involves compiling, printing and distribution of the yearly Membership Directory. Shirley has generously offered to continue as Membership Directory Editor through 2014 as she trains her successor to take the 2015 position. This proposal changes our bylaws and will need approval by vote. Read on to find out how your help can make another position, Exhibit Chair, easier to manage. Now, ask yourself: "How important is SWA to me?"

Newsletter Demo by Celeste McCall

If you have a demo series you would like to share during the summer months, send it in! Celeste McCall was inspired by the demo Soon Warren provided in 2012 at a monthly SWA meeting. Celeste notes "this painting did not photograph correctly. So, please know that the highlights are not that white on oranges but whiter on glass areas. The blacks are all darker, the oranges are more like a real orange, background and inside dark places of the bowl are all darker."



For the first Crystal bowl painting ala realistic style of Soon Warren (finished above) I chose to use a friend's photo that she took for this challenge. (Thank you for sharing your photo June. I hope others will also take more and more photos of their crystal bowls with something in them like you did.)

I'm doing this one first because it has more simple shapes and less cutwork on the bowl. To start, I enlarged the photo up to 8" x 10" and printed that out. On the back of that print I took a watersoluble pencil (from art/craft store) and rubbed it all over the back of the print. This is my graphite to transfer the pattern to the paper. Next I laid the print down on the paper, taped it down and traced on top of the photo print.



Next, I removed the print and began to use Frisket to put on anything that would be 'white' areas of the bowl or light areas on the oranges and bowl. China painters could use red resist (but it isn't really necessary since it can go back to pure white). Here is the next step. However, before painting everything black.....I decided to go ahead and resist/misket/frisket/masking fluid the oranges as well. That actually made the application of blacks much easier. I say 'blacks' because black is never tube black. I use 3 blacks: Blue black, Green Black and Red Black. I always put Red Black in front and one of the other two in the back. This gives the black 'depth' for me.



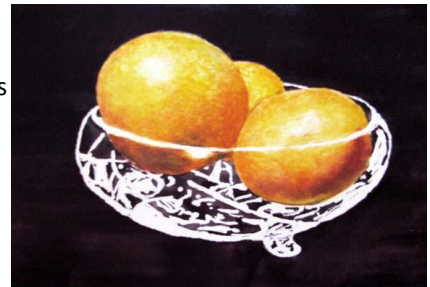
When dry I will remove the masking fluid with a soft white eraser. I use the one that Soon Warren told us to use. Winsor Newton like here:

<http://www.dickblick.com/products/winsor-and-newton-colorless-art-masking-fluid/>

I think I'll finish the fruit before going on to the crystal bowl which will need blue colors on that part. To get the orange peel look, I dry-brushed most of the color onto a damp surface of the paper where the oranges are.



I used a damp clear water brush to dampen the area first, but not down in the ridges of the paper. Then I damp brushed those areas with color. This left an 'orange-peely' skin look. I am using Cad Yellow, Halloween Orange (American Journey Watercolor paint), Burnt Sienna, and Pthalo Green. The green is used VERY sparingly in the darker shadow areas only (on oranges).



I've washed over the left part of the bowl with blue and started to darken some of the areas. I will finish that...then proceed with the right hand side of the bowl. Then I will adjust the values where needed to make it better. And add some white gouache where needed...if needed. To the right is the final image. I think smoother watercolor paper might have worked better than this cheap grade 140lb. The size is around an 8" x 10." It is painted with watercolor and just a tiny bit of white acrylic paint.





ALERT**** Our Annual Membership Exhibition is scheduled for December. This gives us time to organize a reliable group of volunteers who together will see our exhibitions run smoothly and effectively. We need all hands on deck! Many of the jobs can be done from the convenience of your home computer. We need about 15-20 volunteers to help us better organize this process. The weight of carrying this project must be shared. The future of SWA exhibitions is at stake. We would like a full year commitment:

Exhibit Chair (this can be a shared position by 2 people) to oversee the people listed below, be the liaison to the juror, the shipping company and the place where the exhibition is held. Apply for show space following year. A computer/email is required. [*Bob Cook and Mary Stitt will Co-Chair*-- They could use YOUR help with:

Prospectus—1 person update and amend the current prospectus with updated info, see that it is posted on website by our website administrator [*Darla Bostick accepted*]

Notifications—1 person maintain an email list of entrants, make an excel chart of each entry, notify each person that their entry was received, send one group email listing those accepted to show, then a reminder of hanging date & pick up date. See that our secretary has the list of emails to add to the SWA contact list and notify the signatures volunteer of those chosen for the show.

Show Data Chart—1 person to maintain an XL chart of entrants: titles, size, price, contact info

CD Preparation for the Juror—1 person to burn a CD with every entry (labeled properly) and send to juror. Burn a second CD of accepted work and send to catalog editor. Give the SWA board a copy of each.

Hanging Chair—1 person to recruit and oversee about 6 volunteers (would be nice to have a permanent hanging group)

Publicity—1 person to make postcards, get notices to the newspapers (would be nice to be mentioned in Arlington, Bedford, Granbury, Fort Worth, Denton, etc) , take out ads approved by the board (i.e. Watercolor Magazine, Artist Magazine, etc)

Catalog—1 or 2 people to compose, get to printer, proof, pick up, distribute at reception [*Eloise & Ray Sears accepted*]

Sponsorship—1 person to contact about 12 art companies and any other avenues to pursue to ask for sponsorship with funding or merchandise, acknowledge receipt, get info to catalog editors and Exhibit Chair [*Rhonda Barefield accepted*]

Certificates—1 person to print certificates to each artist in the show, award winner, new Signature Member

SWA Signatures: 1 person to add new names to excel chart of previous exhibits (Norma Lively has been doing this for years. Would be nice to have an assistant to learn the ropes and assist. She states if someone will take it over she would be willing to step down.) This position also prints/embosses certificates

People's Choice: 2 people to count votes at the reception and present the winner with their award

Catalog Mailing: our secretary does this

We Need Your Help! Let's Help our Exhibit Chair!!! Even if you have done the job before and plan to help again, we need to hear from you for an accurate volunteer list! Respond to: <darlabostickart@gmail.com>

2013 SWA Officers and Members Extraordinaire

These dedicated members give their talent and time to keep SWA alive! We need YOU on the list!

President: Darla Bostick *OPEN FOR 2014*

President Elect: (*OPEN for 2013, to serve in 2014 as president*)

Recording & Corresponding Secretary: Judy Huebener

EDUCATION:

Monthly Programs: Darla Bostick—open for 2014

Workshop Chairpersons: Shubha Mantri & Lynne Buchanan

Monthly Critiques: Jo Williams for Dave Maxwell

MEMBERSHIP:

Publication of Membership Directory: Shirley Nichols

Processing and Maintenance of Membership rolls: OPEN

EXHIBITIONS:

Exhibition Chair: *Mary Stitt and Bob Cook pending election*

Sponsorship: Rhonda Barefield

Hanging: *OPEN*

Entry Requirements: Janet Southern

Certificates: Mary Stitt

SWA Signatures: Norma Lively *ready to retire*

Catalog/Postcard: Eloise and Ray Sears/Darla Bostick

Catalog Mailing: Judith Huebener

Exhibit volunteers needed for notifications, processing, hanging, certificate printing, labels and strike—please contact Mary Stitt or Bob Cook

Non-Juried Exhibitions Chair: Mary Stitt

FUNDRAISING:

Japanese Gardens: Marie Coerver

FANTastic Fans: Mary Stitt

FINANCE:

Treasurer: *OPEN*

Professional Standards: (Yearly Audit) Brenda Morgan

PUBLICITY:

Website Manager: Celeste McCall

Website Technician: Sharon Giles

Newsletter: Darla Bostick

Photography: Lori Atwell

Local Resources & Advertising: *OPEN*

MEETINGS:

Greeters: Shirley Nichols, Diana Littlejohn, Lynda Robinson, Dee Casstevens, Jane Schneeberger

Hospitality: Marie Coerver

House & Properties: Janet Southern

Painting of the Month Asel Competition: Mary T House

Assistants to Demonstration Artist: Collette Jones, Pam Fritz, Jackie Stengle, Marjorie Ross, Diana Littlejohn, Lynda Robinson

COMMUNITY OUTREACH:

High School Liason: open as new position!

OUT AND ABOUT:

Field Trip Organizer (s): open for FUTURE TRIPS!

Do you have a program or event idea?

How do YOU contribute to YOUR SWA