



SWA December Notes 2015

4th Annual SWA Invitational Exhibition Names "People's Choice" Winner

Each of those invited to participate in the Invitational are winners! Our organization simply could not exist without the volunteer talent of those dedicated to SWA. It takes many hands to run an organization. The Invitational was begun as a humble way to thank our volunteers. When you look at the final page of the newsletter each month, those listed are greatly appreciated. This year's winner is Shirley Nichols. Shirley has worn many hats at SWA and was recently awarded the honorary Lifetime Membership for her work. Her piece below is the winning artwork. Celeste McCall donated a cash prize.



Your SWA could not function without the dedication of our volunteers. Every small contribution of time and talent makes someone else's load lighter. As we begin a new year please consider how you might help...contact any of the incoming leadership to see what is available! (Or look at the last page of the newsletter)

The faces behind our leadership positions:



As pieces were picked up from the UNTHSC Atrium Gallery for the 2015 4th Annual Invitational, a few pics were snagged. Above: Brenda Morgan (audit), Celeste McCall (president, website, entry to CaFE), Darla Bostick (past president, newsletter, field trip), Hugh Heaton (treasurer), Jim Stewart (exhibits), Judy Huebener (secretary), Laurin McCracken (lighting and hanging), Norma Fitzwater (hanging), Shirley Nichols (FANTastic Fans and Membership/Greeting), Veronica Ritchey (photography). Apologies to Lynn Morgan who escaped the camera and those who were not present that Saturday.



Have You Renewed Your Membership? Your 2016 Dues is Due Now!

Our membership for SWA runs on a calendar year January-December. The 2016 dues is payable now so that the Membership Directory can be ready for distribution early next year. Last year some folks missed the deadline for payment and were not included in the Membership Directory. Don't let this happen to you! Make your payment **before 15 December**. Your payment can be made online with pay pal through our website.

[Http://www.SWAwatercolor.com](http://www.SWAwatercolor.com) Or you can mail your membership fee to Paula Johnson, Membership Chair. Her address is 256 Stone Mountain Road, Cresson, TX 76035.

Individual: \$40 Seniors 65+: \$30 Family: Add \$5 to above amounts Lifetime: \$400 one-time payment

Honorary Memberships: Free and are granted by vote of the Board

...And the Winners ARE:

SWA Juried Membership Exhibition at the Fort Worth Community Art Center

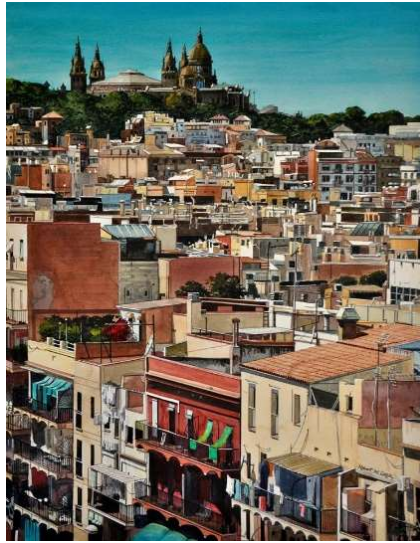
The reception the Fort Worth CAC was well attended and we had a record 6 members who attained Signature Status: Karin Michele Anderson, Norma Fitzwater, Donna Goett, Celeste McCall, Eloise Sears and James Stewart.

Congratulations to them all! And now for the winners....



Best of Show: Ann Winchester (above)

2nd Place: Bob Cook 3rd Place: Judy Mason (below)



Awards for Excellence: Charlene Baker, Muriel Mimura, Celeste McCall and Kenji Nishikawa



Awards of Achievement: Darla Bostick, Sharon Giles, Nancy Maas, and Eloise Sears.



Two paintings sold at the exhibition. Congrats to Lynne Morgan and Judy Mason.



Treasurer's Report

Bank balances at end of October: Checking: \$15, 375.40 Building Fund: \$15,363.54

SWA 2015 Elections

There are still a few spots to be filled but the elections at November's meeting met with approval for the following leadership. An organization is only as strong as its members. Please consider working on a committee or filling in the empty spots! We need all hands on deck to remain healthy and grow.

President: John Nickell

President Elect: Darla Bostick

Treasurer: Hugh Heaton

Secretary: Not Elected but Linda Akin is willing to serve upon election in January

Membership: Paula Johnson

Exhibition Chair: Jim Stewart

Workshop Chair: Rhonda Barefield

Past President: Celeste McCall

Holiday Luncheon/Painting Swap Replaces Regular Meeting



The Holiday Party is set for 11:00-1pm, Monday, 7 December. It will be held at Mimi's Cafe party room area. We have booked for 30 attendees and hope everyone can come join the fun. Bring a wrapped painting for a Secret Santa Swap! (It doesn't have to be framed) It's always lively! Mimi's Café, 5858 SW Loop 820, Fort Worth, TX 76132, (817) 731-9644. Spouses are welcome!



Members in the News

John James won the Jerry's Artarama gift certificate for "Breaking Dawn" in the Spokane Watercolor Society National Exhibit. He also won the Kentucky Watercolor Society Signature award for "Closing the Divide" in the KWS 2015 International Show. Based on John's third acceptance into NEWS (North East Watercolor Society) International Show this year, he was invited to become a signature member. In addition, John was accepted into the Mid Southern Watercolor Society 2016 Annual Membership Show with "Camouflage". As that is his third acceptance he has qualified for Signature Status with MSWS. "Geometry" was selected for the CWA (California watercolor association) 2016 international show.



"Camouflage", "Geometry" and "Breaking Dawn" all by John James

Jo Williams won 1st place in the October Visual Arts of Texas ASEL contest (below) "*Big Bend Glory*" by Jo Williams



Davilla Harding is the recipient of two award winning paintings from Hawaii art shows both held in October: As is the custom, she was also given a lei. Paintings above are "*What Lies Beneath?*" - Best in Show: Asia-Pacific Arts Consortium Juried Art Show and "*First Light*" - 2nd Place: Windward Artists Guild 56th Member Exhibit.

Mindy Faubion has her "Off the Shelves" Exhibition at Emily Fowler Central Library, Denton through 31 December.

Laurin McCracken shared some of his recent accomplishments. First, two of Laurin's watercolors ("*Stereopticon*" and "*Churchill Cigars*") were selected among 685 artworks to be included in the Beijing Biennale 2015. "*Stereopticon*" received a further accolade by being one of only ten of the 683 artworks in the show purchased by the National Museum of Art of China for their permanent collection. Laurin is also involved with another international biennale: The Shenzhen International Watercolor Biennale (SIWB) 2015, which is being exhibited in The Shenzhen Art Museum in Shenzhen,

China. In addition to being a sponsor for the biennale (he is sponsoring the USA Award for an Artist under 30 Years of Age), Laurin is also an exhibiting artist. His watercolor *"Still Life with Tea"* was one of 233 artworks selected among 3,779 for acceptance into the show, which runs 7 December-10 January. Those artworks will then travel for a year in a six-city national traveling exhibition. Opening the day before the SIWB at the Louhu Art Museum (also in Shenzhen, China), is the National Watercolor Society (NWS) International Small Image Exchange Exhibit 2015-2016, a joint exhibition with NWS, which includes 100 paintings by Chinese watercolorists and NWS members. Laurin's watercolor *"Bottles on Wooden Box"* will be representing NWS. The show will also travel to the NWS Gallery in San Pedro, California, where it will hang 30 July-28 August. On 5 December Lauren has 10 works included in a group show at Cassidy Bayou Art and Culture center in Sumner, MS. In October Laurin had 3 paintings in the group show *"Harvest"* at Greenberg Gallery in Santa Fe, NM. One of those, *"Eggplants and Mixing Bowls"* was featured in a review of the show in American Art Collector's October 2015 publication.

Darla Bostick has a 2016 Calendar for Sale. Her works are at North Haven Gardens Art Gallery through January with a reception scheduled Friday, 4 Dec 5-7pm. She also has 13 pieces at Tierney's Tavern and Restaurant in Lewisville. If you are interested in a fun trip to Portugal in April, Darla is taking a group of 8 for 10 days. 4 spots are still available. The trip culminates with a Douro River Cruise (added on as an option).

Jo Williams, Eloise Sears, Mindy Faubion and Darla Bostick are showing their works through 8 January at the Chestnut Tree on the Denton Square with others chosen for the VAST 2016 Calendar.

Margie Whittington shared a demo with the Ellis County Art Association at their November meeting.



"Green Nest with Purple Eggs" acrylic on canvas and *"Nest Collage"* acrylic/collage on gessoed paper by Margie Whittington

Darla Hobbs, Margie Whittington and Ann Winchester have joined together at the FWCAC Gallery 6 for the month of December. They invite all to attend the reception Friday 4 December from 6-9pm. Darla donated a work to the 2015 Artists' Christmas Fundraiser for Campfire of Fort Worth.

Nancy Maas was awarded 2nd place for *"Serene Sails,"* a watercolor weaving in this fall's "Keller's Got Art."

Dates Announced for SWA 2016 International Juried Exhibition

Plans are well underway for the 2016 International Show at the Central Library in Fort Worth juried by Frank Eber.

Please note the entry dates are earlier than first posted.

Saturday, 20 February: Deadline at midnight online through CaFE

1 March: Notifications sent to entrants

Sunday, 10 April: Shipped paintings due

Saturday, April 16, Noon-2pm: Installation

Saturday, April 30, 2-4pm: Reception/Awards

Saturday, May 28, Noon-2pm: Removal of Show

Instructions for Entry: Here is the link to the international exhibition in 2016

https://www.callforentry.org/festivals_unique_info.php?ID=3040

If experiencing any trouble with the link, follow these instructions:

Go to Cafe at: <https://www.callforentry.org/>

Log into your account at café and click on tab that says "Apply To Calls"

After going to that page there will be a place on the right instructing "Invitational Passcode". Enter the numbers **2016**
Click on Enter

It will take you to a page where you can choose "click HERE to apply..."

Click on that and it will take you to https://www.callforentry.org/festivals_unique_info.php?ID=3040

To accommodate the demo and workshop provided by Frank Eber please notice the April SWA meeting will be Monday, 25 April (one week later than usual). The Frank Eber Workshop is scheduled for 26-29 April.

Make Your Reservation Now for the 4-Day Frank Eber Workshop 26-29 April!



It isn't too early to make your plans for the Frank Eber workshop. As our juror for the International, Frank is presenting a week-long workshop for us.

Where: St John's Anglican Church, 2401 College Ave, Fort Worth, Texas

When: 26-29 April

Cost: Your SWA membership earns a workshop discount! Costs are still being tabulated and will be posted in January.

Rhonda Barefield is the new Workshop Chair. Because she works full time, she would appreciate more hands on deck to help with the workshop. If you are planning to attend, perhaps you could volunteer to be the attendant for the day! Her email is: rhondabarefieldart@gmail.com

ASEL ART AWARDS: Lynn Morgan is Artist of the Year!



SWA members are invited to bring a completed, framed piece to our monthly meeting. The artwork is shown anonymously with each member in attendance voting once for their favorite. In November all first place pieces return for a final selection of "Artist of the Year." Awarded the prestigious Artist of the Year is Lynn Morgan with Valeri Cranston winning 2nd Place.

Many thanks to Mary T House who chairs this fun event each month! Thank Asel Art Supply when you shop at 825 Foch Street, Fort Worth.



November Notes from Mary Ann White's Demo



Many of us braved the bad weather for the November meeting and were rewarded with a wonderful demo by Mary Ann White. She draws her portraits from life and transfers them to 140# watercolor paper. Using sketchy lines with prismacolor art sticks she lays out the subject and defines the shapes. Before she paints she does incorporate some collage to build up the image. For instance, a lace doily was glued as part of the shawl using matt medium for adherence. She also placed 3 scraps of wallpaper in the background. This is done before any of the underpainting begins. Mary Ann blocks in color using a 2" flat brush and acrylics that have been thinned to the consistency of a watercolor wash. A few drips here and there add interest as she works her way around the color wheel. The yellow, orange and red washes were followed by medium magenta, manganese blue and turquoise deep (which she explained is thalo blue and green mixed). Being careful to leave white areas she used a smaller brush for the negative spaces and patterns in the clothing. Painting the face came fairly late in the process and she used quin gold and light portrait pink. She explained she considers her style as a combination of folk art and experimental. As she began the background she placed her darkest dark near the lightest light for contrast, using quinacridone burnt orange for her darks. As the painting progressed she began to use the same colors again with less dilution and was careful to not block out large areas of any one color. The result was a happy mix of colors that each retained their own brilliance and a methodical use of pattern.





SWA membership runs on a calendar year of Jan-Dec

Membership includes these benefits:

- Fellowship with like-minded creative folks
- Free monthly SWA newsletter
- Entry discount for any SWA show
- Annual Juried Membership Exhibition
- Jo William's critique session before meetings
- 20% discount at Asel Art Supply
- Fun competitions (FANTastic Asian Fan Contest)
- Participation in Art of the Month Contest
- January "New Members" Pizza Party in January



Our website address is: www.swawatercolor.com

Welcome to new member Pam Bracado of Arlington

<pambrocato@gmail.com>

And returning member Laurie Lindemeier of Fort Worth

<operalll@att.net>

We like new members. . . invite your friends!

First visit is free.

- Post your art work on our Facebook
[Http://www.facebook.com/SWAwatercolor](http://www.facebook.com/SWAwatercolor)
- Free image on the SWA Members Gallery
- Buy space on the SWA Premium Gallery for \$20
- While maintaining SWA membership earn SWA Signature Membership after selection to 5 of our juried exhibitions (without disqualification)
- December Holiday Party and painting swap
- Field trips to fun artsy event

Our Monthly meetings are held at the UNTHSC, Everett Building. After you turn from Camp Bowie to Clinton St turn left into a sloping parking lot beyond the vacant kiosk. We are on the bottom floor of the building to the right corner. Watch for a banner on the parking lot with directions to our room (or check the map on the website)

5:45—Board Meeting

6pm—Critique with Jo Williams (bring in 1 or 2 works for some friendly advice)

7pm—brief business notices

7:15-9pm our demo, snack and art of the month

MONDAY, 7 Dec, 11am-1pm: Holiday Party (replaces regular meeting) Mimi's Café, 5858 SW Loop 820, Fort Worth

25 Jan Meeting changed to accommodate Martin Luther King Day, demo James Tennyson

15 February: Monthly meeting, demo artist, Randy Meador **June, July, August:** no monthly meeting

March 21: Monthly meeting, demo artist Soon Warren

19 September: Monthly meeting, demo artist Jo Moncrief

26 April: Monthly meeting with Frank Eber as guest demo artist

17 October: Monthly meeting, demo artist Jim Stewart

26-29 April: Frank Eber Workshop in Fort Worth

21 November: Monthly meeting, demo artist TBA

16 May: Monthly meeting, demo artist Paula Pillow

December: Holiday party TBA

Ongoing SWA Fundraisers (They help you to help us!)

During the Holiday buying season, remember SWA especially when buying through Amazon



makes quarterly donations to SWA through your shopping. Go to www.krogercommunityrewards.com If you already have a Kroger's Plus card, create your account and input your card number. In 7 to 10 days after shopping you will notice at the bottom of your receipt a donation was recorded for SWA.



offers SWA members a 20% discount on their watercolors. They now carry customized brushes that are 100% vegan and cruelty-free. Monthly the savings given members are matched and donated back to SWA. The company will post member's art work created with their paints on their website, blog and direct people to a site of the artist's choice. SWA discount code: Members-20-SWA <http://shop.colorsofnature.com>



donates .05% of your online purchase back to SWA. Choose Society of Watercolor Artists as your nonprofit organization. It is listed as Denton, TX for its location...we are working to clear that up. Tell your friends!

2016 SWA Officers and Members Extraordinaire

These dedicated members give their talent and time to keep SWA alive! We need YOU on the list!

2016 BOARD OF DIRECTORS

President: John Nickell
President-Elect: Darla Bostick
Secretary: **Linda Akin pending vote**
Treasurer: Hugh Heaton
Exhibit Chair: James Stewart

Education and Workshop Chair: Rhonda Barefield
Communications Chair: Darla Bostick
Membership Chair: Paula Johnson
Past President (Emeritus): Celeste McCall

STANDING COMMITTEES

EDUCATION COMMITTEE

CHAIR - Rhonda Barefield
Committee Members Are:
Director of Programs: Nancy Maas
House & Properties: **OPEN**
Monthly Critique: Jo Williams
Social Chairman (Refreshments/Receptions): **OPEN**
ASEL Painting of the Month/Year: Mary T House
Director of Workshops: Rhonda Barefield
Field Trips: Darla Bostick

EXHIBITION COMMITTEE

CHAIR: Jim Stewart
Committee Members Are:
Website Entries & Submissions: **OPEN**
Monetary Entries for Exhibitions: Hugh Heaton
Membership for Exhibitions: **OPEN**
SWA Signatures: Debbie Downing
Hanging Volunteers: **Let Jim know if you can help!**

GRANTS COMMITTEE

CHAIR – Watson Arnold

MEETINGS:

Greeters: Shirley Nichols **Open for more!**
Hospitality: **Open**
House & Properties: **Open**
Painting of the Month ASEL Competition: Mary T House
Assistants to Demonstration Artist: Nancy Maas

PUBLICITY & COMMUNICATION COMMITTEE

Co-CHAIRS – Darla Bostick and Mary Stitt
Committee Members Are:
Publicity: **OPEN**
Newsletter: Darla Bostick
Print Editor for Catalogs: **OPEN**
Website Manager: **OPEN**
Website Consultant: Sharon Giles
Photography: Veronica Ritchey

FINANCE AND MARKETING COMMITTEE

CHAIR - Hugh Heaton
Committee Members Are:
Director of Finance & Budget: Hugh Heaton
Grants: Watson Arnold
Professional Standards (yearly audit): Brenda Morgan
Japanese Gardens Festival: **OPEN**
Fantastic Fans: Shirley Nichols

MEMBERSHIP COMMITTEE CHAIR –Paula Johnson

Committee Members Are:
Editor of the Annual Membership Directory: **OPEN**
Director of Membership: Paula Johnson
Greeters: Shirley Nichols

OUT AND ABOUT:

Field Trips: **OPEN**
Do you have a program or event idea?
How do YOU contribute to YOUR SWA